



## Milson Road, W14

£799,999

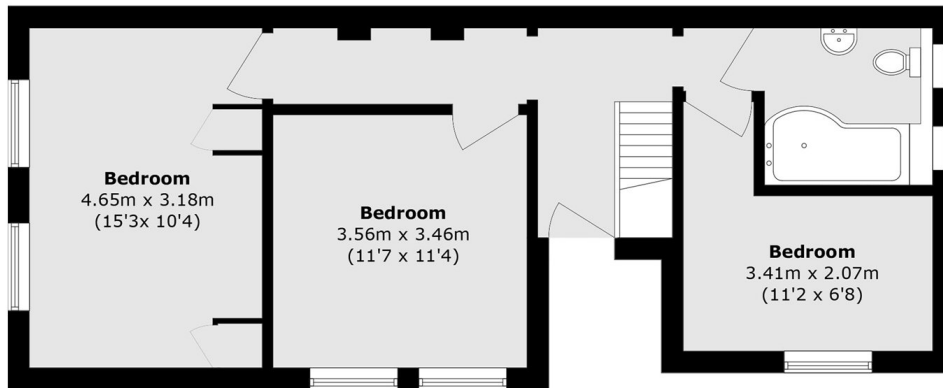
Arranged over two floors, this spacious three double bedroom apartment offers bright and versatile accommodation, enhanced by impressive high ceilings and excellent natural light throughout the upper level. The property features a large reception room and separate kitchen, with stairs leading directly to a private south facing garden. Further benefits include a share of freehold.

Ideally located moments from Kensington Olympia and Olympia London, with excellent transport links via Kensington (Olympia) station (London Overground and District Line). The green open spaces of Holland Park are within easy reach, along with the amenities of Brook Green and Hammersmith.

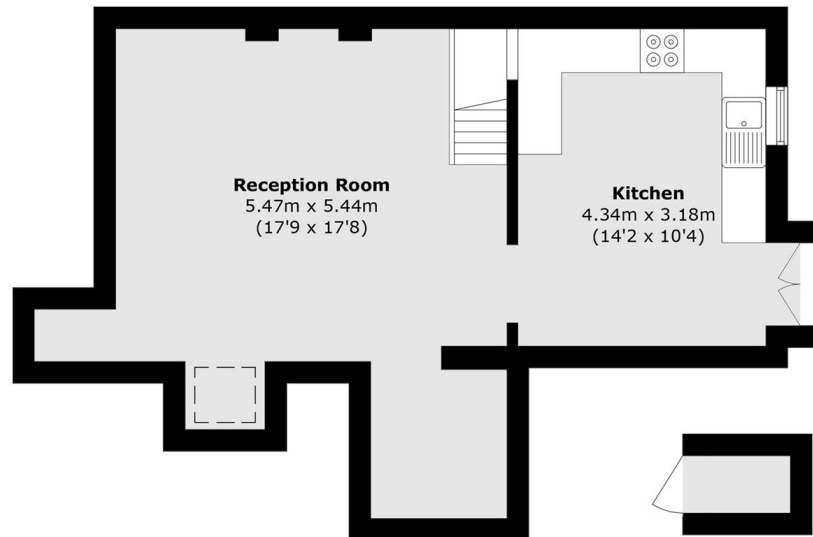
### Features

- Share Of Freehold
- Three Double Bedrooms
- Private South Facing Garden
- High Ceilings
- Ample Storage
- No Onward Chain

# Milson Road, London, W14



**Ground Floor**



**Basement**

**Storage**

Total area (approx.): 98.8 sq. m (1063.5 sq. ft)  
Externa Storage area (approx.): 0.9 sq. m (9.7 sq. ft)