



Upper Tennyson Road

Guide Price £300,000 - £315,000

- Guide Price £300,000 to £315,000
- Enclosed tiered garden with sun terrace, patio areas and summerhouse
- Attractive views across the Bristol Channel
- Well-presented throughout
- Converted loft space with WC
- Single garage with power and electric door
- Separate Utility Room
- EPC Rating: D



Pinkmove

01633 746088
team@pinkmove.co.uk



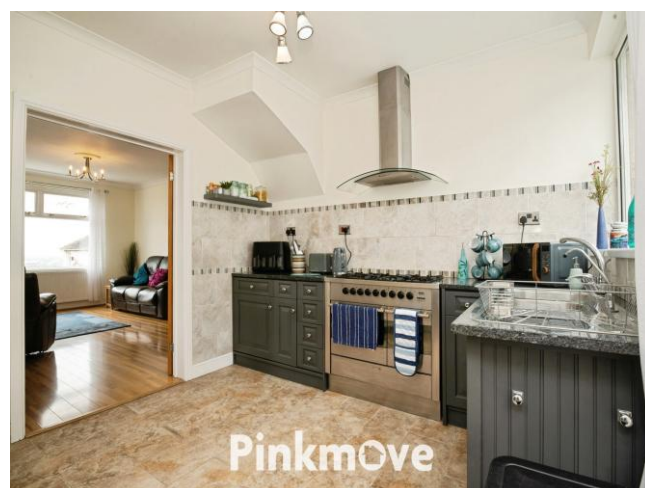
About the property

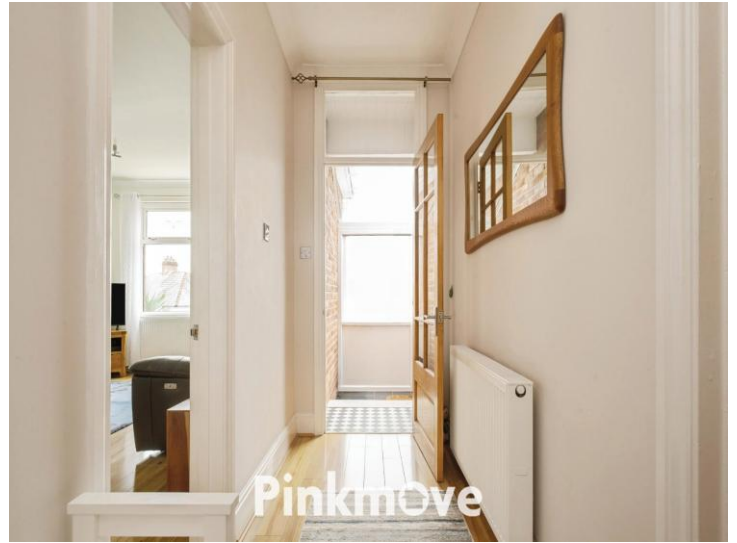
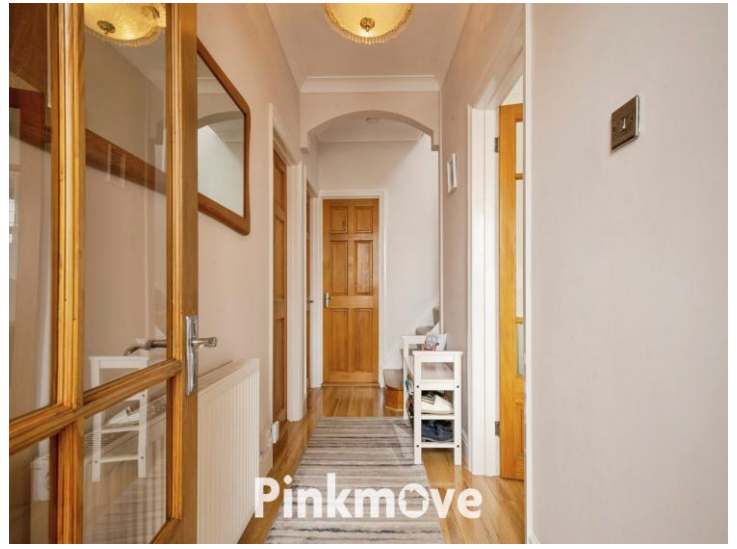
We are pleased to offer for sale this well-presented property in Newport, enjoying attractive views across the Bristol Channel. Ideally located close to Beechwood Park and Chepstow Road, the property benefits from excellent bus links, a range of local amenities, and easy access to the M4, making it ideal for commuters.

The accommodation begins with a large entrance hall featuring stairs leading to the converted loft space, which also includes a WC and wash hand basin. Returning to the main ground floor level, the property offers two well-proportioned double bedrooms and a stylish four-piece family bathroom.

The spacious lounge provides stunning views and leads through to a modern, well-equipped kitchen with ample storage and a useful pantry. Beyond the kitchen is a separate utility room, providing additional storage and practical space for appliances. From here, there is access to the enclosed rear tiered garden, which features a sun terrace, patio seating areas, and a summerhouse—perfect for relaxing or entertaining.

To the front of the property, steps lead up to an additional patio area where the outstanding views can be enjoyed. The home further benefits from UPVC windows throughout and a single garage with power and an electric door for added convenience.





Accommodation

Lounge

Kitchen

Bedroom 1

Bedroom 2

Bathroom

Loft Space

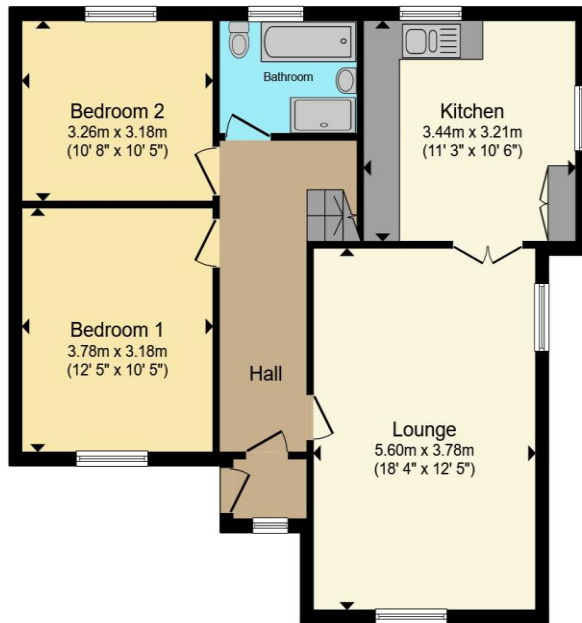
Wc

01633 746088

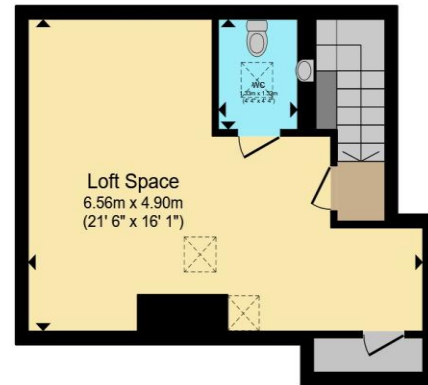
team@pinkmove.co.uk

Pinkmove

Floorplan



Ground Floor



First Floor

Total floor area 100.5 sq.m. (1,082 sq.ft.) approx

This floor plan is for illustrative purposes only. It is not drawn to scale. Any measurements, floor areas (including any total floor area), openings and orientation are approximate. No details are guaranteed, they cannot be relied upon for any purpose and they do not form part of any agreement. No liability is taken for any error, omission or misstatement. A party must rely upon its own inspection(s). Powered by www.localagent.com

Pinkmove

Important Information

Note while we endeavour to make our sales details accurate and reliable, if there is any point which is of particular interest to you, please contact the office and we will be pleased to confirm the position for you. We have not personally tested any apparatus, equipment, fixtures, fittings or services and cannot verify they are in working order or fit for their purposes. Nothing in these particulars is intended to indicate that carpets or curtains, furnishings or fittings, electrical goods (whether wired or not). Gas fires or light fittings or any other fixtures not expressly included form part of the property offered for sale. This computer generated Floorplan, if applicable, is intended as a general guide to the layout and design of the property. It is not to scale and should not be relied upon for dimensions. Tenure: We cannot confirm the tenure of the property as we have not had access to the legal documents. The buyer is advised to obtain verification from their solicitor or surveyor.

Peter Alan Limited is registered in England and Wales under company number 2073153. Registered Office is Cumbria House, 16-20 Hockliffe Street, Leighton Buzzard, Bedfordshire, LU7 1GN. VAT Registration Number is 500 2481 05. For activities relating to regulated mortgages and non-investment insurance contracts, Peter Alan Limited is an appointed representative of Connells Limited which is authorised and regulated by the Financial Conduct Authority. Connells Limited's Financial Services Register number is 302221. Most buy-to-let

