



Guide Price
£425,000

Freehold

4x  2x  1x 

**Albion Drive, Larkfield,
Aylesford, Kent, ME20**

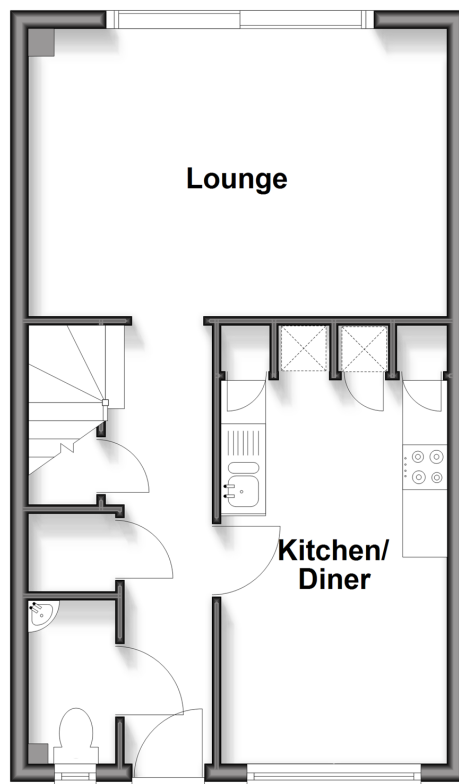
OVER 60?

Secure this property
for up to **59% less!**

Wards
Helping you move forwards

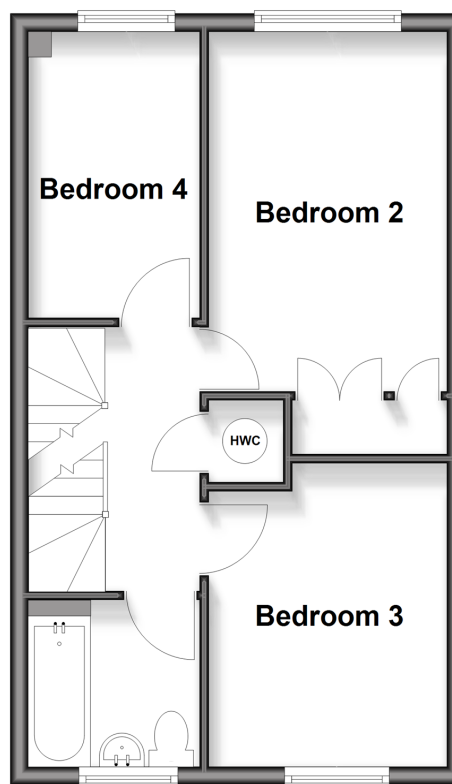
Ground Floor

Approx. 38.4 sq. metres (413.4 sq. feet)



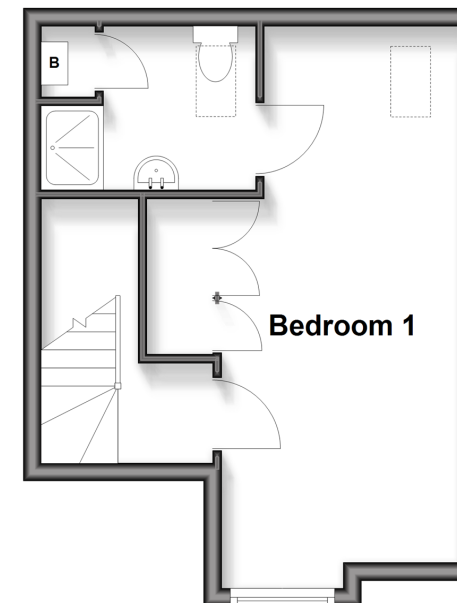
First Floor

Approx. 38.4 sq. metres (413.4 sq. feet)



Second Floor

Approx. 26.2 sq. metres (281.9 sq. feet)



Accommodation

GROUND FLOOR

Entrance Hall
Cloakroom
Kitchen/Diner: 14'2 x 8'2 (4.32m x 2.49m)
Lounge: 15'3 x 11'8 (4.65m x 3.56m)

FIRST FLOOR

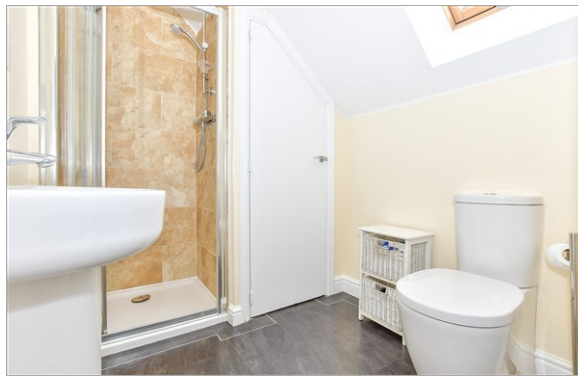
Landing
Bedroom 2: 13'6 x 8'7 (4.12m x 2.62m)
Bedroom 3: 11'0 x 8'7 (3.36m x 2.62m)
Bedroom 4: 10'8 x 6'5 (3.25m x 1.96m)
Bathroom

SECOND FLOOR

Landing
Bedroom 1: 20'1 x 10'0 (6.13m x 3.05m)
En-Suite Shower Room

OUTSIDE

Driveway & Garage
Front & Rear Gardens



Main features

- Well presented throughout
- Handy ground floor cloakroom
- Supersized bedroom 1 with an en-suite shower room adds a touch of luxury
- Great flexibility to use the living space to suit you - work from home ease
- Excellent transport links by road & rail nearby



Nearest Schools

Primary Schools: Brookfield Junior School 0.6 miles, Lunsford Primary 0.6 miles, St James the Great Primary and Nursery School 1.5 miles. Secondary Schools: The Malling School 1.5 miles, Aylesford School 2.0 miles, Holmesdale Technology College 2.1 miles



Transport Information

Train Stations: New Hythe 0.8 miles, West Malling 1.7 miles, East Malling 1.9 miles



Address

Albion Drive, Larkfield, Aylesford, Kent, ME20



Directions

For directions to this property please contact us.



Wards
Helping you move forwards

Call Larkfield Branch 01732 847877 ■ wardsofkent.co.uk



- Legal advice should be taken to verify fixtures/fittings, planning, alterations and/or lease details
- Appliances & services are untested, dimensions are approximate and floor plans are not to scale
- Through a Homewise Home For Life Plan people aged 60+ can secure this property for up to 59% less, by purchasing a Lifetime Lease



12935694/20260121/CK/JT