



## Westferry Circus, E14

£575,000

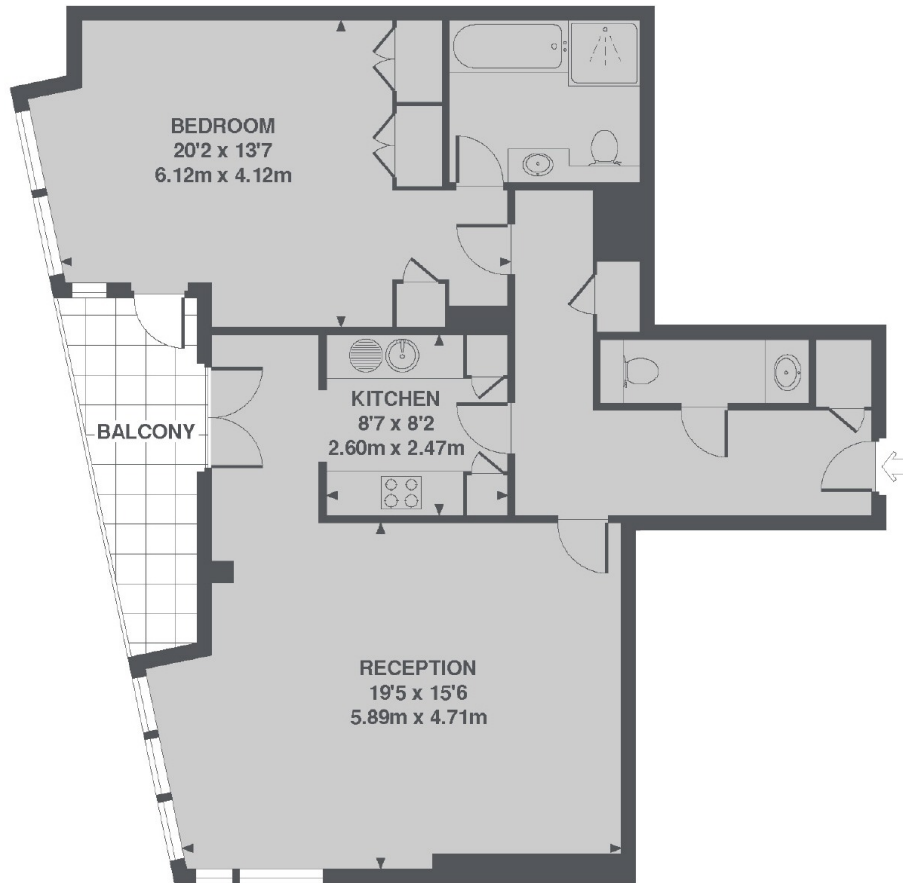
Belgrave Court is set within the sought-after Canary Riverside development and offers approximately 900 sq. Ft. Of well proportioned living space, including a private balcony with river views. Further benefits include a dual-aspect reception room, concierge service, additional cloakroom, and no onward chain.

Canary Riverside is located within the Canary Wharf Estate, just a short walk from shops, restaurants, bars, and the Thames Path. Excellent transport links include the Elizabeth Line, Jubilee Line, DLR, and Thames Clipper services, providing easy access to the City and West London.

### Features

- 900 Square Feet
- Canary Wharf Location
- Additional Cloak Room
- River Views
- Private Balcony
- Concierge Service

# Westferry Circus, London, E14



5TH FLOOR

TOTAL APPROX. FLOOR AREA 895 SQ. FT. (83.1 SQ. M.)