



[www.jeffreygross.co.uk](http://www.jeffreygross.co.uk)

CARDIFF

VALE

CAERPHILLY

BRISTOL



*Harrowby Lane*



Rare opportunity to acquire a commercial unit in the heart of Cardiff Bay.

Comments by Jon Hooper-Nash



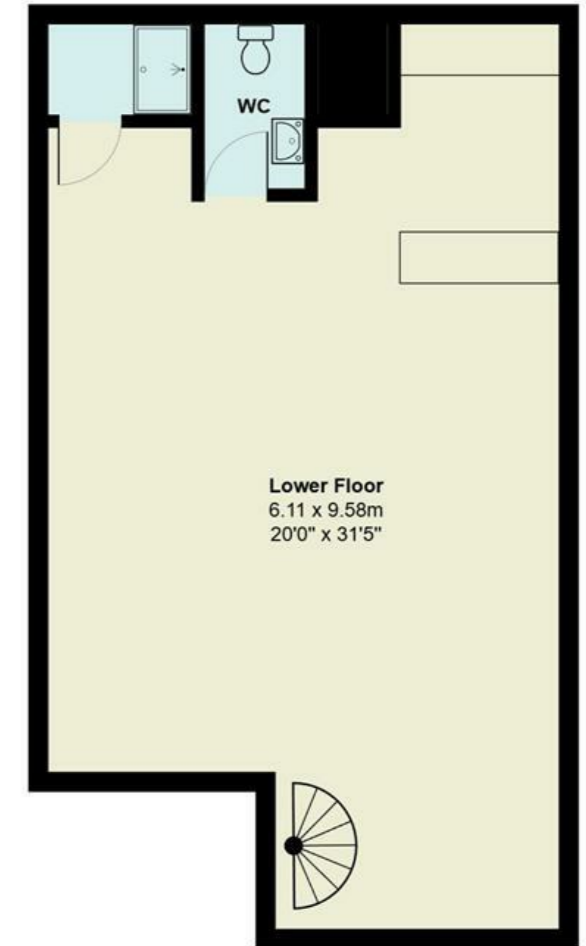
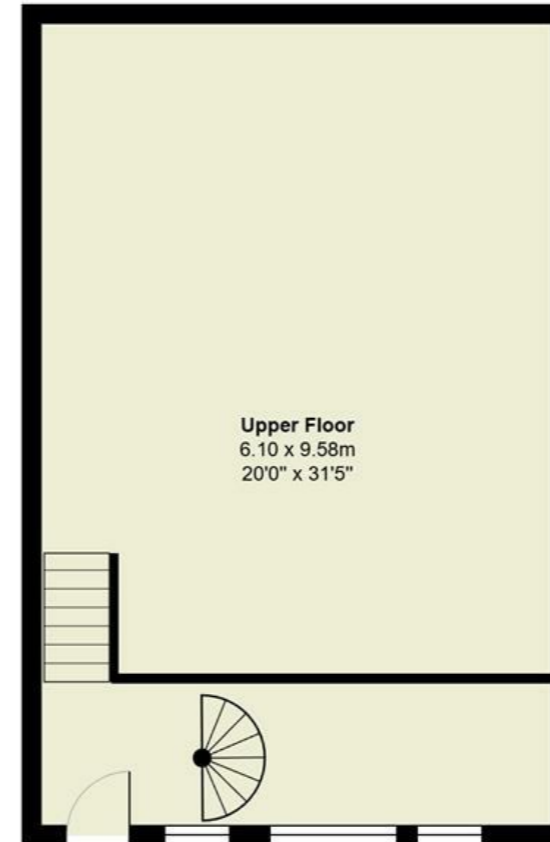
**Property Specialist**

**Jon Hooper-Nash**

Director

jon@jeffreycross.co.uk

## Harrowby Lane, Cardiff Bay

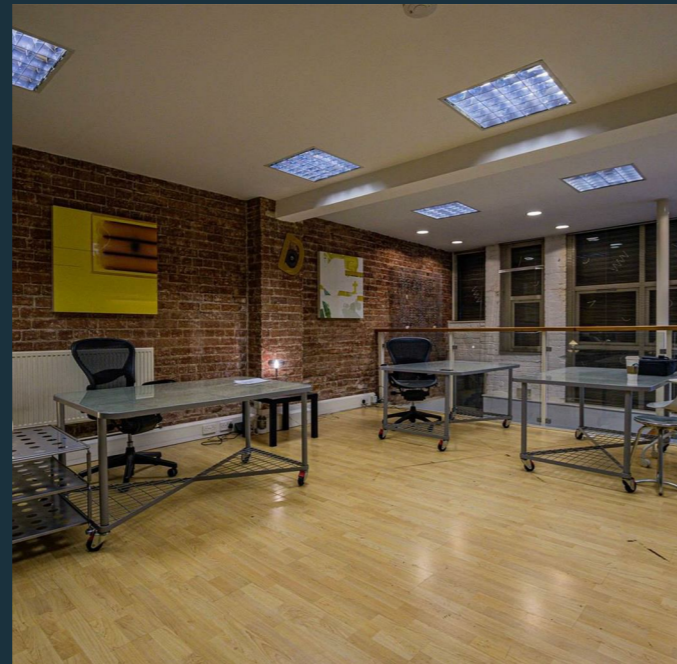


Total Area: 119.4 m<sup>2</sup> ... 1285 ft<sup>2</sup>

All measurements are approximate and for display purposes only

Multi-uses for commercial space over split level and in a central area.

Comments by the Homeowner





# Harrowby Lane

, Cardiff, CF10 5GN

£11,000



0 Bedroom(s)



1 Bathroom(s)



1285.00 sq ft



Contact our  
**Pontcanna Branch**

02920 499680

In the heart of Cardiff Bay and conveniently located for access in and out of the City via the A4232 link road is this spacious commercial unit that is split over two levels. Offering a generous floorspace of just over 1200sqft the property is split over two levels with the main work space to the upper floor and kitchen, WC and small shower room to the lower level. Available for multi-usage. A rare opportunity. Service charge included.

For more information, please call Jon in the JeffreyRoss Commercial Team on 02920499680 (option 2)





CARDIFF

VALE

CAERPHILLY

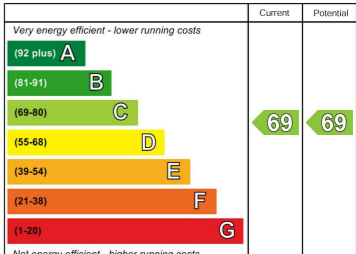
BRISTOL

[www.jeffreygross.co.uk](http://www.jeffreygross.co.uk)





Energy Efficiency Rating



England & Wales EU Directive 2002/91/EC