



4

Millerslea Gardens, Helensburgh, Argyll And Bute. G84 7DD





4

Millerslea Gardens, Helensburgh, Argyll And Bute. G84 7DD



Built in the mid 1980's Millerslea Gardens is a beautifully maintained modern flatted development of sixteen apartments with number 4 having a rarely available ground floor position and access to private communal parking.

The location of Millerslea Gardens is ideal, located on the lower east side of Helensburgh the town centre can be reached by a level walk or short car or bus journey. As mentioned, this particular apartment enjoys a rarely available ground floor position within the first building of the development which is accessed via a secure door entry system.

On entering there is a welcoming hallway which has a handy utility room. The lounge is a lovely size with aspects over South King Street and there is ample space for a dining table and chairs if required. An opening from the lounge leads to a modern kitchen which has been fitted with white gloss units and has a range of integral appliances and space for free-standing white-goods. The double bedroom is an excellent size and has great storage consisting of a built-in wardrobe and an additional cupboard. The shower room has been designed with ease of maintenance in mind and is fitted with a large walk-in cubicle, wet-wall and a contemporary wall hung sink with vanity storage. The property is double glazed throughout and has electric heating.

Millerslea Gardens is beautifully maintained with resident's gardens and parking available. The development is managed by a Glasgow based factor who organise general maintenance and communal buildings insurance.

EPC Band E
Council Tax Band C



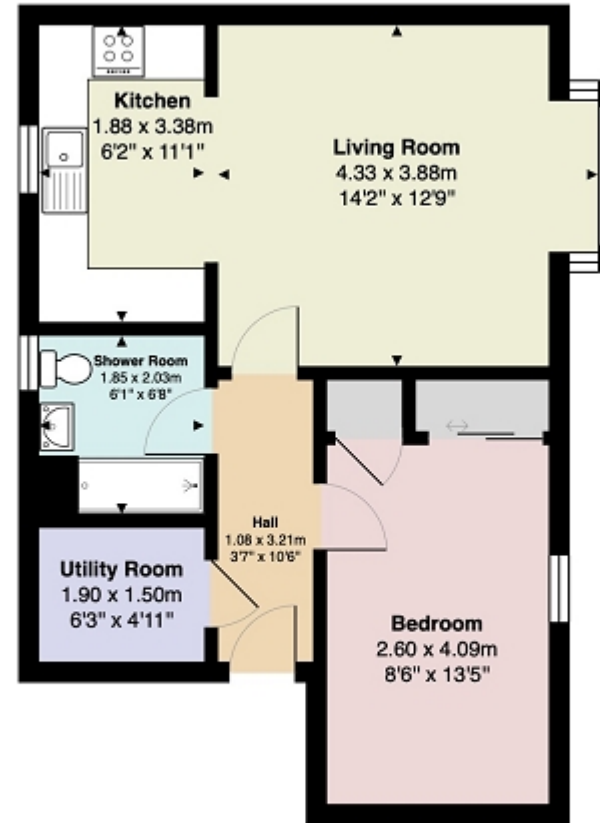
4
Millerslea Gardens, Helensburgh, Argyll And Bute. G84 7DD





Measurements

Hallway	10' 06" x 3' 07" or 3.20m x 1.09m
Utility Room	6' 03" x 4' 11" or 1.91m x 1.50m
Living Room	14' 02" Max x 12' 09" Max or 4.32m Max x 3.89m Max
Kitchen	11' 01" x 6' 02" or 3.38m x 1.88m
Bedroom 1	13' 05" x 8' 06" or 4.09m x 2.59m
Shower Room	6' 08" x 6' 01" or 2.03m x 1.85m



All measurements are approximate and for display purposes only

NOTE: These details have been prepared for guidance. If there is any point which you find misleading please contact McArthur Stanton where further information is available. Measurements have been taken from wall to wall, unless otherwise stated, and have been recorded by use of a sonic beam. Services and appliances not tested. Details have been prepared by March 2026. If required, we can arrange for a property market appraisal to be carried out on your existing property.

Contact our office for further details



4

Millerslea Gardens, Helensburgh, Argyll And Bute. G84 7DD

