



Guide Price
£600,000

Freehold

4x  2x  2x 

**Hayden Road, Waltham
Abbey, Essex, EN9**

OVER 60?

Secure this property
for up to **59% less!**

 **DOUGLAS
ALLEN**
Helping you move forwards



Main features

- Four double bedrooms
- Playroom that could be used as a study
- Modern kitchen/dining area with separate utility room
- Detached garage and off street parking
- Situated in a sought after development

Accommodation

GROUND FLOOR

- Entrance Porch
- Cloakroom
- Entrance Hall
- Lounge: 15'11 x 9'10 (4.85m x 3.00m)
- Kitchen/Dining Area: 24'11 x 12'0 (7.60m x 3.66m)
- Utility Room: 9'2 x 5'5 (2.80m x 1.65m)
- Playroom : 9'8 x 8'4 (2.95m x 2.54m)

FIRST FLOOR

- Landing
- Bedroom 1: 11'6 x 9'5 (3.51m x 2.87m)
- En-Suite Shower Room
- Bedroom 2: 13'0 x 10'1 (3.97m x 3.08m)
- Bathroom

SECOND FLOOR

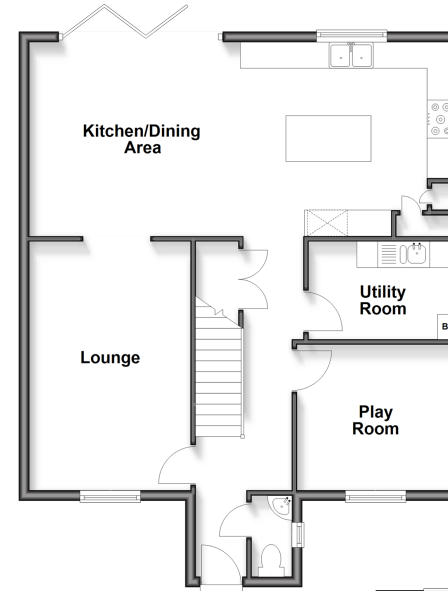
- Landing
- Bedroom 3: 13'1 x 9'9 (3.99m x 2.97m)
- Bedroom 4: 10'1 x 9'4 (3.08m x 2.85m)

OUTSIDE

- Garage
- Off Street Parking
- Rear Garden

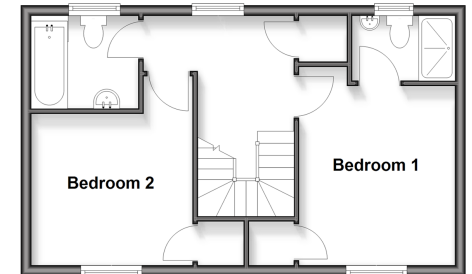
Ground Floor

Approx. 73.1 sq. metres (786.3 sq. feet)



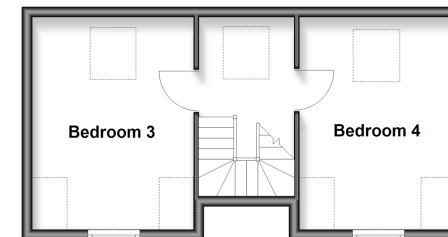
First Floor

Approx. 39.0 sq. metres (419.7 sq. feet)



Second Floor

Approx. 31.8 sq. metres (342.7 sq. feet)



Call Epping - 01992 560600 ■ douglasallen.co.uk

■ Through a Homewise Home For Life Plan people aged 60+ can secure this property for up to 59% less, by purchasing a Lifetime Lease



51509423/20260328/RP/LA