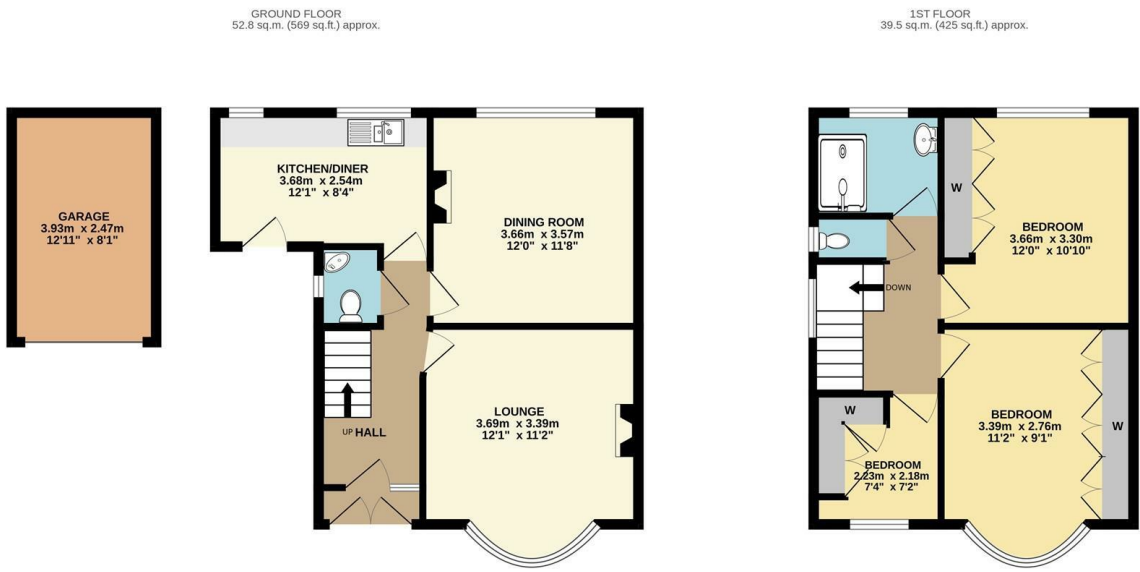




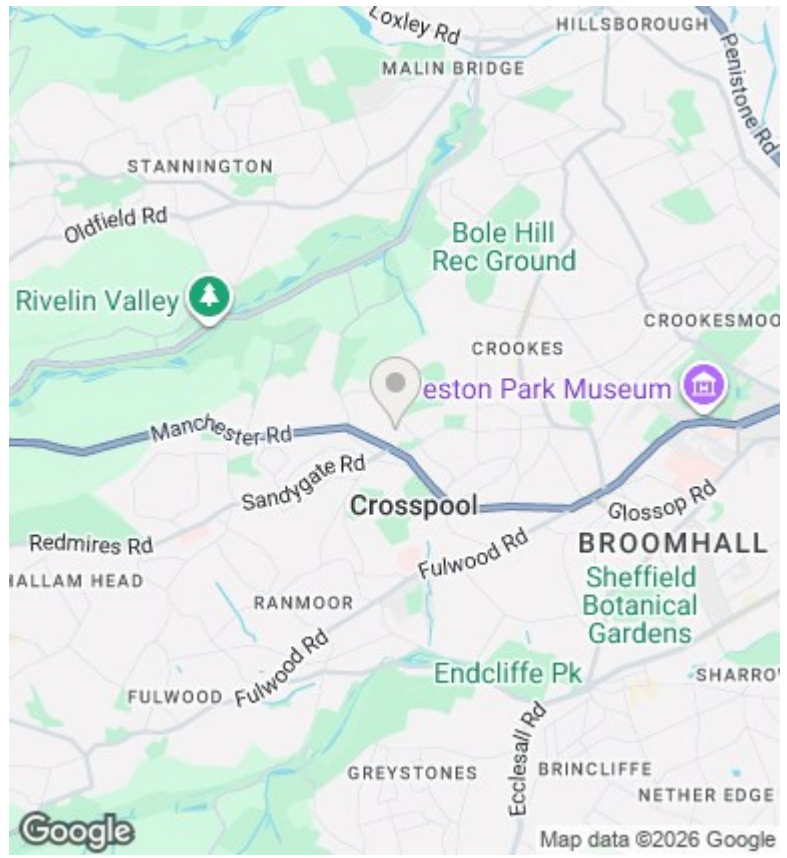
## 20 Lydgate Hall Crescent, Crosspool, Sheffield, S10 5NE

Offers Over £325,000

- No onward chain
- Requires modernisation
- South facing rear garden
- Easy access to the city centre, Sheffield University and central hospitals
- Semi-detached home
- Fantastic potential
- Detached garage to the side
- Quiet location
- Two double bedrooms and a single bedroom/home office/nursery
- Short walk to local shops, cafes and pubs



TOTAL FLOOR AREA: 92.3 sq.m. (994 sq.ft.) approx.  
Measurements are approximate. Not to scale. Illustrative purposes only  
Made with Metropix ©2025



## Directions

## Viewings

Viewings by arrangement only. Call 01142 687777 to make an appointment.

## Council Tax Band

B

## EPC Rating:

D

Energy Efficiency Rating		Current	Potential
<i>Very energy efficient - lower running costs</i>			
(92 plus) <b>A</b>			
(81-91) <b>B</b>			<b>82</b>
(69-80) <b>C</b>			
(55-68) <b>D</b>		<b>61</b>	
(39-54) <b>E</b>			
(21-38) <b>F</b>			
(1-20) <b>G</b>			
<i>Not energy efficient - higher running costs</i>			
<b>England &amp; Wales</b>		EU Directive 2002/91/EC	