

Reduced to sell £581,950
The Retreat, Kingsbury



 **3**
Bedrooms

 **1**
Bathroom

211 Edgware Rd, London, NW9 6LP |
colindale@warrenbradleystates.co.uk

020 8200 7007

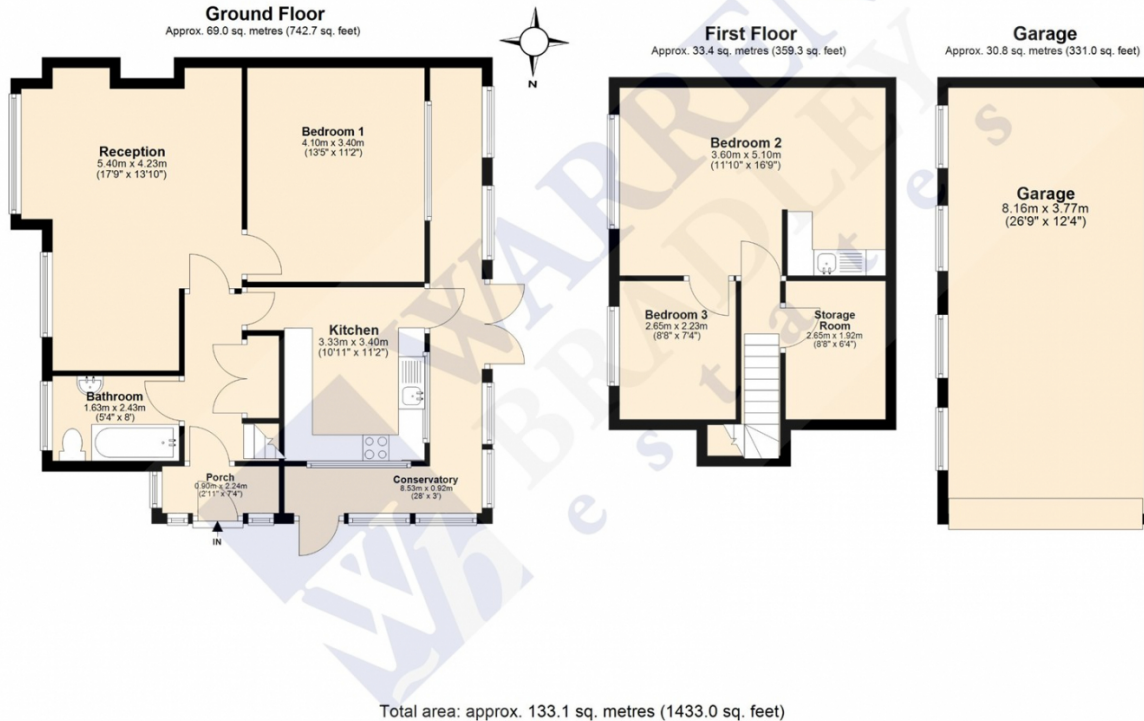
Reduced to sell £581,950
The Retreat, Kingsbury



Warren Bradley Estates are delighted to offer for sale this rarely available three bedroom chalet bungalow which is offered chain free.

Presented in good condition after being well maintained by its current owners the property is now looking for its next family to move in and make it their own. Internally the property benefits from a large lounge with dining area, a spacious fully fitted kitchen, a tiled bathroom, 3 bedrooms, additional storage room and a sunny wraparound side conservatory.

Externally there is a stunning mature rear garden and large garage accessed via the shared driveway.



Energy Efficiency Rating		Current	Potential
Very energy efficient - lower running costs			
(92+)	A		
(81-91)	B		
(69-80)	C		75
(55-68)	D	58	
(39-54)	E		
(21-38)	F		
(1-20)	G		
Not energy efficient - higher running costs			
England, Scotland & Wales			EU Directive 2002/91/EC

Address: The Retreat, Kingsbury

