



**Horsham Gates One, North Street, Horsham, West Sussex, RH13 5TT**  
**Guide Price £220,000 - £225,000 Leasehold**

  
**MARTIN&CO**

- No Onward Chain
- Balcony
- Fitted Wardrobes
- Integrated Kitchen
- Contemporary Bathroom

**BALCONY APARTMENT** - This one double bedroom apartment is situated in the popular Horsham Gates development which is a short walk from Horsham Town Centre and railway station. Luxury integrated kitchen, utility cupboard, contemporary bathroom, fitted wardrobes and parking.

This modern second- floor apartment is offered with no onward chain and features a private balcony-perfect for enjoying some fresh air or extending your entertaining space.

Ideally positioned close to Horsham train station and the park, it offers superb convenience for commuters and anyone wanting easy access to local amenities.



Inside, the contemporary open- plan living area is bright and inviting, with direct access to the balcony. The stylish bathroom complements the well- proportioned bedroom, creating a comfortable and low- maintenance home.

Whether you're a first- time buyer or looking to downsize, this property presents an excellent opportunity in a highly sought- after location.

**Outside**

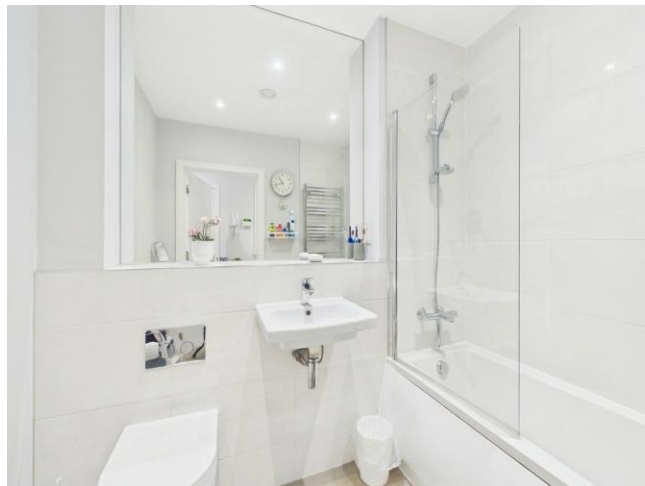
Parking via residents permit

**Situation**

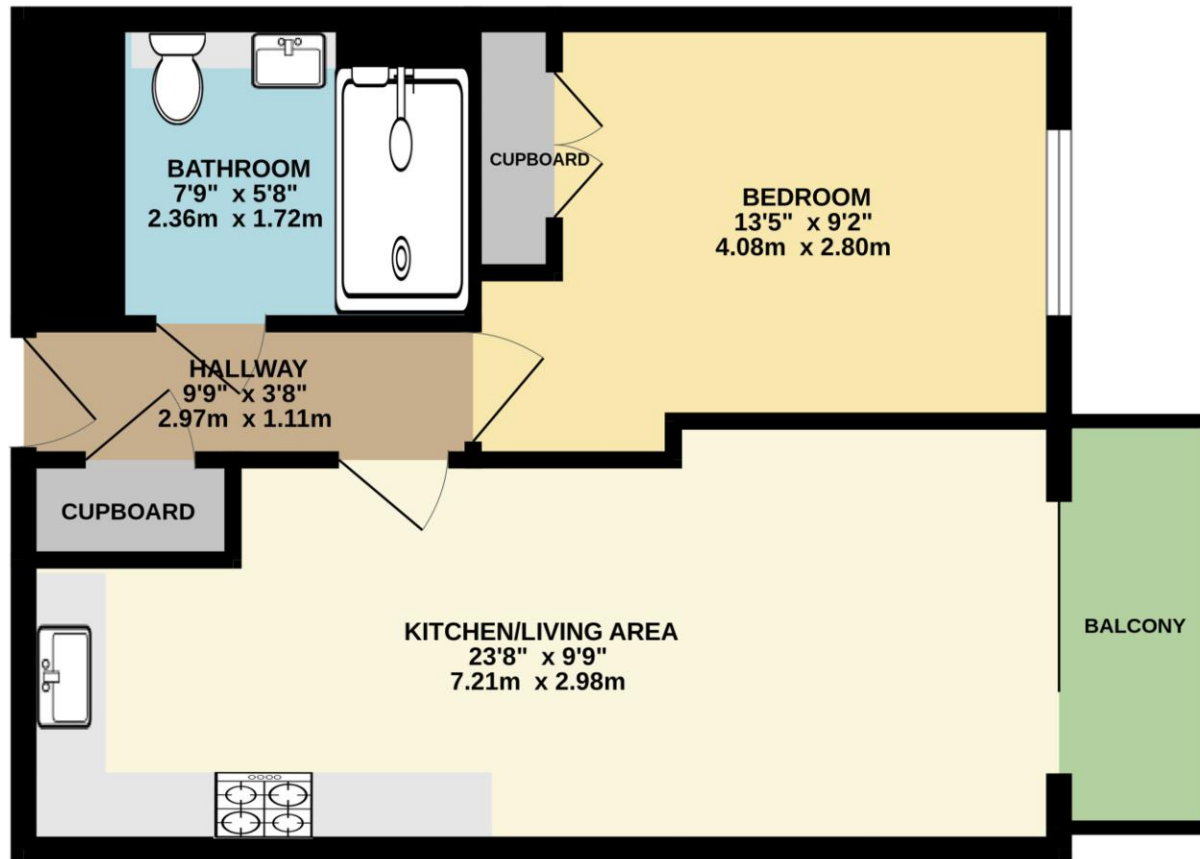
Horsham is a thriving historic market town with an excellent selection of national and independent retailers including a large John Lewis at Home and Waitrose store. There are twice weekly award winning local markets in the Carfax in the centre of Horsham to stock up on local produce. East Street, or 'Eat Street' as it is known locally, has a wide choice of restaurants.

Piries Place in the centre of Horsham has been redeveloped to include the independent Everyman three screen cinema, a 92 bed hotel, shops and restaurants. You are spoilt for choice for leisure activities as there is a leisure centre with swimming pool close to Horsham Park whilst the nearby Capitol has a cinema and theatre. There are some beautiful walks and cycle rides in the immediate countryside. Further afield, the stunning South Downs and coast are within easy reach.

For those needing to commute, Horsham Station has a direct line to Gatwick (17 minutes) and London Victoria (56 minutes) and there is easy access to the M23 leading to the M25



Energy Efficiency Rating		
	Current	Potential
<i>Very energy efficient - lower running costs</i>		
(92+) <b>A</b>		
(81-91) <b>B</b>	83	83
(69-80) <b>C</b>		
(55-68) <b>D</b>		
(39-54) <b>E</b>		
(21-38) <b>F</b>		
(1-20) <b>G</b>		
<i>Not energy efficient - higher running costs</i>		
<b>England &amp; Wales</b>	EU Directive 2002/91/EC	



TOTAL FLOOR AREA : 455 sq.ft. (42.3 sq.m.) approx.

Whilst every attempt has been made to ensure the accuracy of the floorplan contained here, measurements of doors, windows, rooms and any other items are approximate and no responsibility is taken for any error, omission or mis-statement. This plan is for illustrative purposes only and should be used as such by any prospective purchaser. The services, systems and appliances shown have not been tested and no guarantee as to their operability or efficiency can be given.

Made with Metropix ©2026

## Martin & Co Horsham

Envision House • 5 North Street • Horsham • RH12 1XQ  
T: 01403 248222 • E: horsham@martinco.com

# 01403 248222

<http://www.martinco.com>



**Accuracy:** References to the Tenure of a Property are based on information supplied by the Seller. The Agent has not had sight of the title documents. A Buyer is advised to obtain verification from their Solicitor. Items shown in photographs including but not limited to carpets, fixtures and fittings are not included unless specifically mentioned within the sales particulars. They may however be available by separate negotiation. Buyers must check the availability of any property and make an appointment to view before embarking on any journey to see a property. No person in the employment of the agent has any authority to make any representation about the property, and accordingly any information given is entirely without responsibility on the part of the agents, sellers(s) or lessors(s). Any property particulars are not an offer or contract, nor form part of one. **Sonic / Laser Tape:** Measurements taken using a sonic / laser tape measure may be subject to a small margin of error. **All Measurements:** All Measurements are Approximate. **Services Not tested:** The Agent has not tested any apparatus, equipment, fixtures and fittings or services and so cannot verify that they are in working order or fit for the purpose. A Buyer is advised to obtain verification from their Solicitor or Surveyor.