



**MAPLEWOOD**  
PROPERTY & INVESTMENTS LTD.

**MOORE HOUSE, SW1W**

**£500/week**

Spacious studio apartment available within the prestigious Grosvenor Waterside development in Chelsea. Secure Entry, CCTV, Gym and Wellness Centre.

Ideally positioned near Chelsea Bridge, moments from Battersea Park, with convenient transport links via Sloane Square and Victoria stations, and easy access across Central London.

**393 sq ft | Includes Council Tax | EPC rating: C**



---

**Available immediately, this modern and flexibly furnished studio apartment is located within Moore House, in the highly regarded Grosvenor Waterside development in Chelsea.**

The studio has been thoughtfully arranged to maximise space and functionality, offering an open-plan layout with a kitchen and dining area.

Offers comfortable living and the option to work or study from home, with an integrated double bed that opens and closes allowing the room to adapt seamlessly from day to night.

A separate contemporary bathroom features a walk-in shower, basin and built-in storage, while a dedicated laundry cupboard with washer/dryer adds further practicality.

Residents of Grosvenor Waterside benefit from an exceptional range of amenities including a 24-hour concierge, fully equipped gym, spa facilities and beautifully maintained communal areas.

Ideally located on the north side of Chelsea Bridge, moments from Battersea Park, with Sloane Square and King's Road nearby, the property also offers excellent transport links via Sloane Square and Victoria stations.

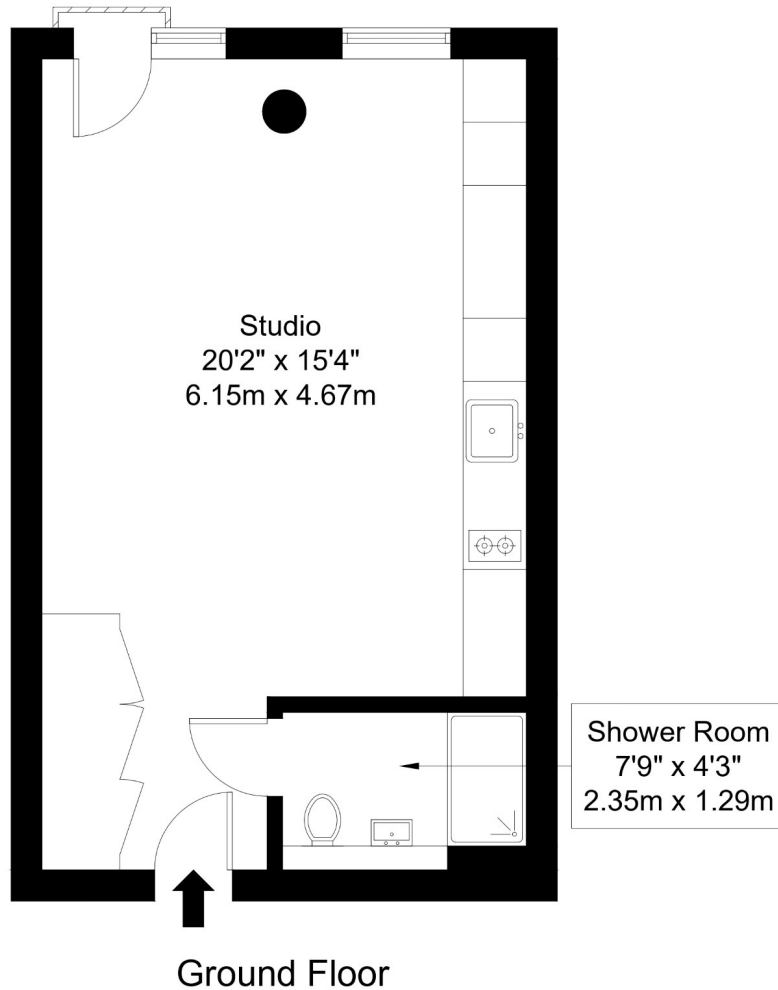
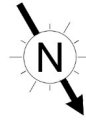
An ideal home for professionals seeking a well-located, high-quality studio in one of London's most desirable riverside developments.





MOORE HOUSE SW1W

Approx Gross Internal Area = 36.5 sq m / 393 sq ft



## Moore House SW1W

- Superb Studio Apartment
- Rent Includes Council Tax
- Close to Sloane Square
- Excellent Riverside Location
- On-Site Gym and Spa Facilities
- Security and 24-Hour Concierge
- Space to Work or Study from Home
- Video Viewings Available
- Long Term Tenancy



393 sq ft | Council tax band: D | EPC rating: C

### Energy Efficiency Rating

	Current	Potential
<i>Very energy efficient – lower running costs</i>		
(92–100) <b>A</b>		
(81–91) <b>B</b>		
(69–80) <b>C</b>	74	76
(55–68) <b>D</b>		
(39–54) <b>E</b>		
(21–38) <b>F</b>		
(1–20) <b>G</b>		
<i>Not energy efficient – higher running costs</i>		

Approx Gross Internal Area

393 sq ft / 36.5 sq m

EPC: C

Council Tax: Included

This Floor plan is not to scale and measurements and areas are approximate, therefore should be used for illustrative purpose only. The plan has been prepared in accordance with RICS code of Measuring Practice and whilst we have confidence in the information produced it must not be relied on. Maximum lengths and widths are represented on the floor plan if there is any aspect of particular importance, you should carry out or commission your own inspection of the property. Copyright © BleuPlan

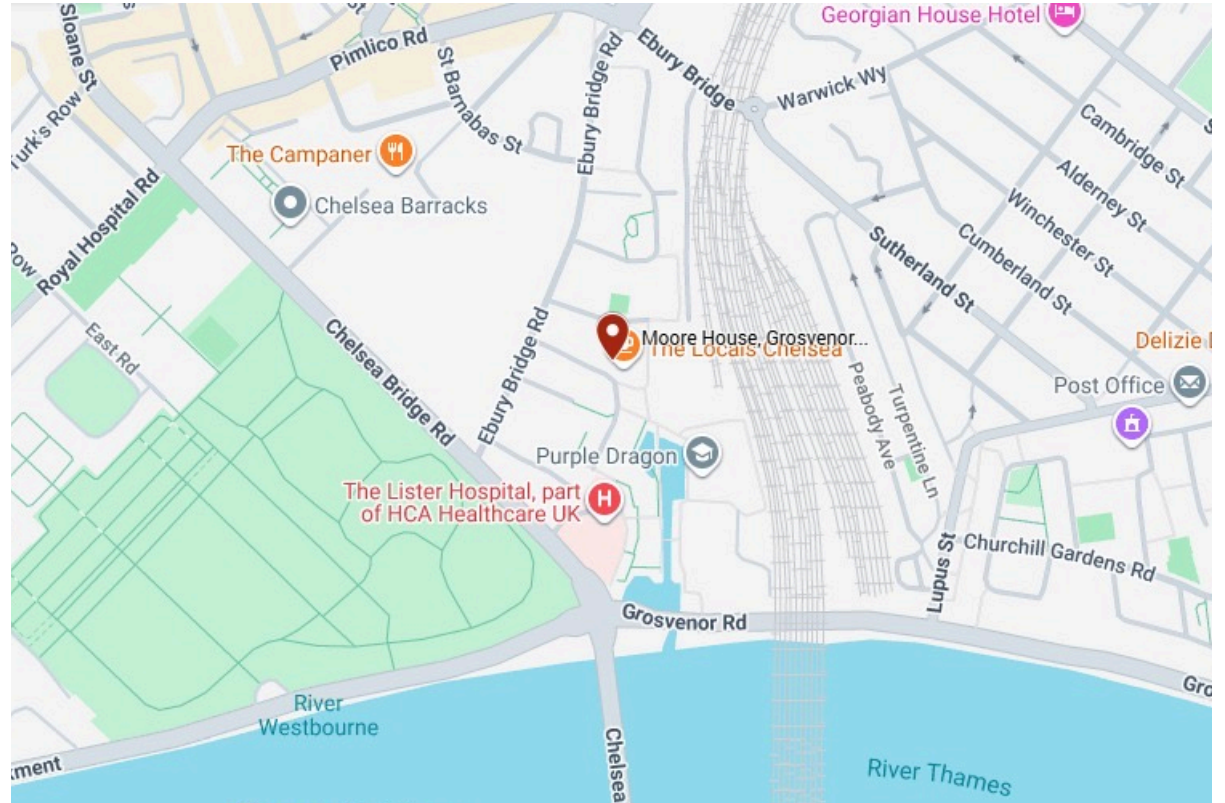


**MAPLEWOOD**  
PROPERTY & INVESTMENTS LTD.

**0203 488 0224**

hello@maplewoodproperty.co.uk

www.maplewoodproperty.co.uk



© Maplewood Property & Investments Ltd 2024. Maplewood Property & Investments Ltd is a registered limited company in England & Wales. Company registration no. 10082285. Registered address 85, First Floor Great Portland Street, London, England W1W 7LT. These details are for guidance only and complete accuracy cannot be guaranteed. They do not constitute a contract or part of a contract. All measurements are approximate. No guarantee can be given with regards to planning permissions or fitness for purpose. No equipment, fixture or fitting has been tested. Items shown in photographs are not necessarily included.