



East Acridge, Barton-upon-Humber, North Lincolnshire

Offers over £250,000





Key Features

- ****NO CHAIN****
- Plot Size 0.2 Acres
- Recently Redecorated
- Total Floor Area: 77 Square Metres
- Kitchen Diner & Lounge
- Three Bedrooms & Conservatory
- Family Bathroom & Utility Room
- Spacious Enclosed Rear Garden
- Detached Garage & Driveway
- Central Town Location
- EPC rating D





DESCRIPTION

****NO CHAIN****

Enjoying a sizeable plot of 0.2 acres, is this recently redecorated detached bungalow.

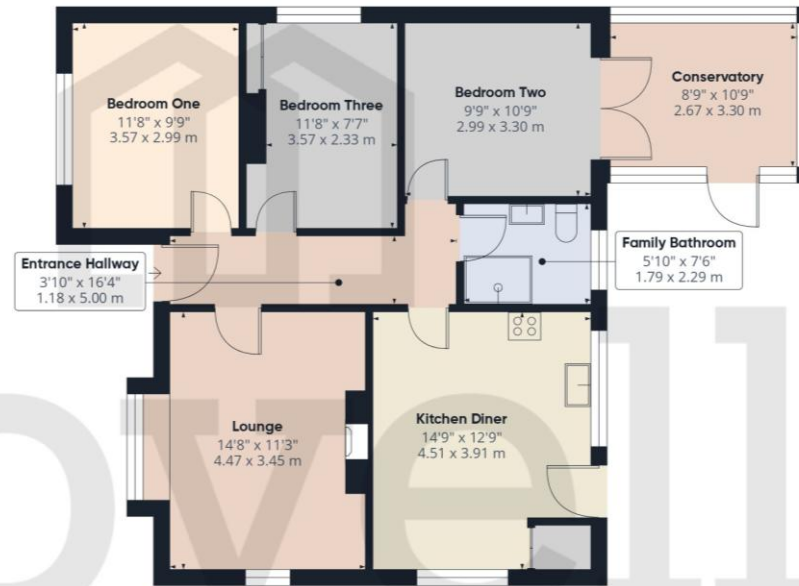
The generously proportioned accommodation includes a light and airy entrance hallway, welcoming you in to view this property. To the right is the comfortable lounge with a multifuel burner. Perfect for cold winter evenings. Further on, there is a fully equipped kitchen diner. A spacious kitchen with an open plan dining area. While three bedrooms offer great accommodations. With all benefitting from a stylish family bathroom and bedroom two enjoying a conservatory overlooking the rear garden.

Attractive gardens surround the property, mainly laid to lawn with decorative shrubbery and colourful plantings. A private driveway provides off-street parking and access to the detached garage and utility room.

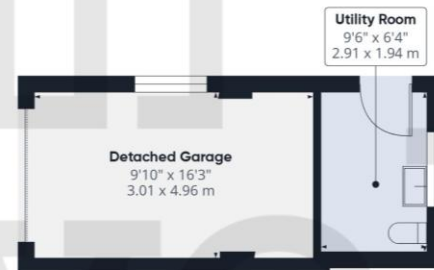
VIEWING RECOMMENDED!



FLOORPLAN



Ground Floor Building 1



Ground Floor Building 2

East Acridge, Barton-upon-Humber, North Lincolnshire

TENURE

The Tenure of this property is Freehold.

COUNCIL TAX

Band C

VIEWING

By appointment with the Sole Agent Lovelle Estate Agency, telephone 01652 636587. We recommend prior to making an appointment to view, prospective purchasers discuss any particular points likely to affect their interest in the property with one of our property consultants who have seen the property in order that you do not make a wasted journey.

MORTGAGE ADVICE

Budgeting correctly and choosing the right mortgage for a move is vital. For independent mortgage and insurance advice call our mortgage advisor on 01652636587 to arrange an appointment.

AGENTS NOTE

These particulars are for guidance only. Lovelle Estate Agency, their clients and any joint agents give notice that:- They have no authority to give or make representation/warranties regarding the property, or comment on the SERVICES, TENURE and RIGHT OF WAY of any property. These particulars do not form part of any contract and must not be relied upon as statements or representation of fact. All measurements/areas are approximate. The particulars including photographs and plans are for guidance only and are not necessarily comprehensive.

SKB Estates Limited T/A Lovelle Estate Agency

HOW TO MAKE AN OFFER

If you are interested in this property then it is important that you contact us at your earliest convenience. We will require certain pieces of personal information from you in order to provide a professional service to you and our client. The personal information you have provided to us may be shared with our client, the seller, but it will not be shared with any other third parties without your consent other than stated reasons detailed within our privacy policy. More information on how we hold and process your data is available on our website <https://www.lovelle.co.uk/privacy-policy/> and you can opt out at any time by simply contacting us.

For any offer you wish to make we will need to establish certain details before negotiation can take place. This is so that our vendor can make an informed choice when negotiating and accepting your offer. You will be asked to provide formal I.D. and address verification, as required under new Money Laundering Legislation. You might also have one or two questions for us, such as which solicitor to choose, or which mortgage lender has the best offers available for me. We have a one stop shop to satisfy all of these needs so please ask.

Score	Energy rating	Current	Potential
92+	A		
81-91	B		
69-80	C		76 C
55-68	D	66 D	
39-54	E		
21-38	F		
1-20	G		

A copy of the full Energy Performance Certificate for this property is available upon request. Advisory Notes - Please be advised if you are considering purchasing a property for Buy To Let purposes, from 1st April 2018 without an EPC rated E or above it will not be possible to issue a new tenancy, or renew an existing tenancy agreement.

Follow us on:



ENTRANCE 1.18m x 5m (3'11" x 16'5")

Entered through a half glazed wooden door into the hallway. Doors to all principal rooms.

LOUNGE 2.99m x 3.3m (9'10" x 10'10")

Windows to the front and side elevation. Adam style fireplace surround housing a multifuel burner.

KITCHEN DINER 4.51m x 3.91m (14'10" x 12'10")

Range of wall and base units with contrasting work surfaces and tiled splashbacks. Integral double electric oven and a four ring gas hob with an extraction canopy over. Stainless steel sink and drainer with a swan neck mixer tap. Plumbing for a washing machine. Finished by a dining area and a storage cupboard.

Windows to the side and rear elevation, door to the rear garden.

BEDROOM ONE 4.47m x 3.45m (14'8" x 11'4")

Window to the front elevation.

BEDROOM TWO 3.57m x 2.99m (11'8" x 9'10")

Double opening French doors to the conservatory.

CONSERVATORY 2.67m x 3.3m (8'10" x 10'10")

Constructed on a low rise brick wall and fully double glazed with a polycarbonate roof. Door to the patio area.

BEDROOM THREE 3.57m x 2.33m (11'8" x 7'7")

Window to the side elevation and storage cupboards.

FAMILY BATHROOM 1.79m x 2.29m (5'11" x 7'6")

White three piece bathroom suite incorporating a walk-in shower cubicle with a shower over, push button WC and a vanity wash hand basin.

Decorative tiles throughout and a chrome effect towel rail radiator.

Window to the rear elevation.

OUTSIDE THE PROPERTY:**FRONT ELEVATION**

Predominantly laid to lawn with a driveway offering ample off-street parking and access to the detached garage.

DETACHED GARAGE *3.01m x 4.96m (9'11" x 16'4")*

Up and over door, power and lighting.

UTILITY ROOM *2.91m x 1.94m (9'6" x 6'5")*

Window to the rear elevation. Plumbing for a washing machine and space for a tumble dryer, WC.

REAR ELEVATION

A substantial rear garden, predominantly laid to lawn with a paved patio area. Beautifully manicured shrubs and fruit trees add to the charm. While established colourful plantings add to the whimsical aspect of this private garden. Mature trees surround it making it feel private and secluded. Finished with a summer house, greenhouses and a timber constructed garden shed.

LOCATION

Barton-upon-Humber is a highly regarded historic market town with Primary and Senior schools, quaint shops, supermarkets, stylish restaurants, cosy pubs, charming coffee shops and two petrol stations. It benefits from numerous recreational facilities and is surrounded by open countryside. The distinctive Churches, library, wildlife reserves and popular museums allow you to enjoy peace and tranquillity whilst the shopping and nightlife of neighbouring towns means you are never far away from a faster pace of life!

BROADBAND TYPE

Standard - 17 Mbps (download speed), 1 Mbps (upload speed),
Superfast - 79 Mbps (download speed), 20 Mbps (upload speed),
Ultrafast - 1000 Mbps (download speed), 600 Mbps (upload speed).

MOBILE COVERAGE

Outdoors - Great,
Indoors - Great,
Available - O2, Vodafone, EE, Three.

*

We are required by law to conduct anti-money laundering checks on all those selling or buying a property. Whilst we retain responsibility for ensuring checks and any ongoing monitoring are carried out correctly, the initial checks are carried out on our behalf by Landmark who will contact you once you have had an offer accepted on a property you wish to buy. The cost of these checks for buyers is £24.00 (incl. VAT) per client, which covers the cost of obtaining relevant data and any manual checks and monitoring which is required. This fee will need to be paid by you in advance of us issuing a memorandum of sale, directly to Landmark, and is non-refundable. We will receive some of the fee taken by Landmark to compensate for its role in the provision of these checks.

