



## High Street, NW10

£550,000

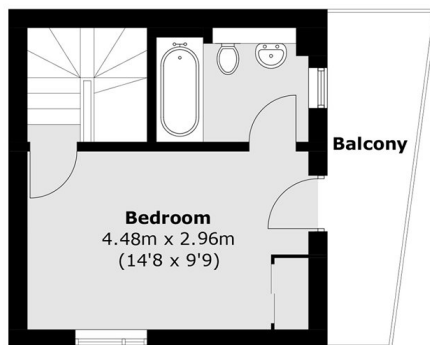
Set behind secure gates, this eco-focused development features a well presented three double bedroom sustainable townhouse arranged over three floors. The property offers a spacious kitchen and reception room, two bathrooms, and a private roof terrace accessed from the top floor bedroom, making it an ideal purchase for both families and investors.

High Street is located in the heart of Harlesden, offering immediate access to a wide range of shops, cafés, and local amenities, with easy connectivity towards Kensal Rise. Transport links are excellent, with Willesden Junction (Bakerloo line and London Overground) nearby, multiple bus routes, and the future Old Oak Common station set to further enhance connectivity in the area.

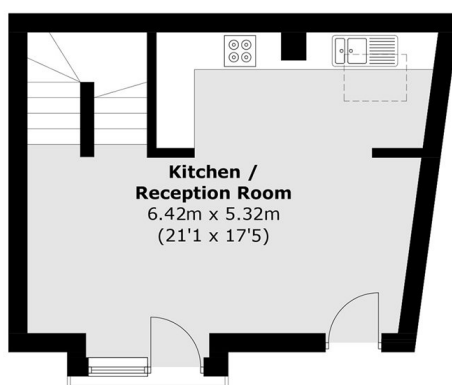
### Features

- Three Bedroom
- Two Bathroom
- Communal Court Yard
- Three Storey House
- Great Condition
- Chain free

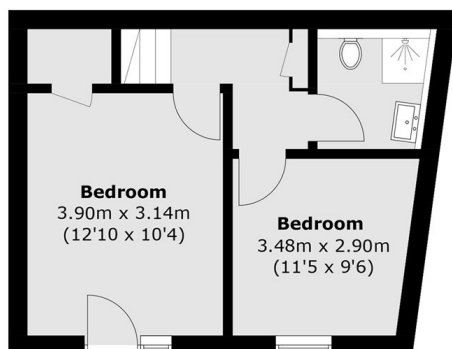
# High Street, London, NW10



**Second Floor**



**First Floor**



**Ground Floor**

Total area (approx.): 84.1 sq. m (905.2 sq. ft)  
Balcony : 7.2 sq. m (77.5 sq. ft)