



Guide Price

£650,000

Freehold

3x  3x  2x 

**Bethersden Road,
Smarden, Ashford, Kent,
TN27**

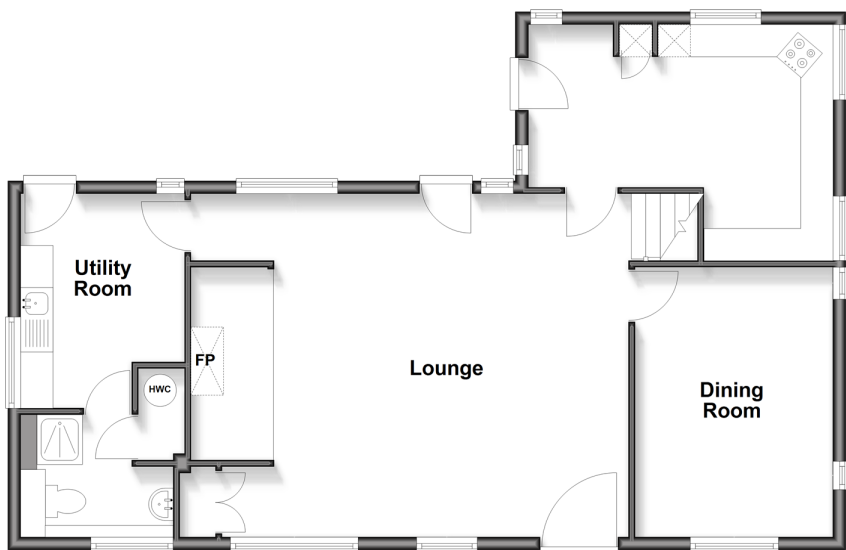
OVER 60?

Secure this property
for up to **59% less!**

Wards
Helping you move forwards

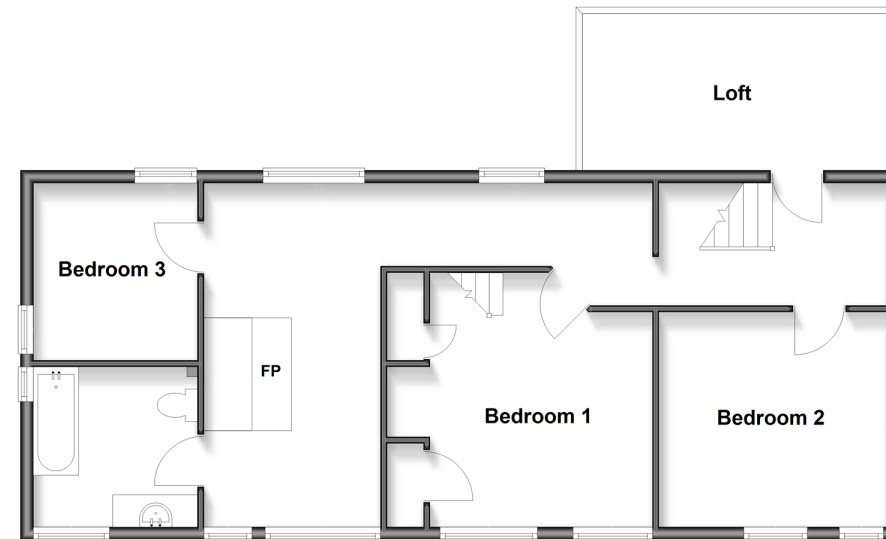
Ground Floor

Approx. 79.1 sq. metres (851.0 sq. feet)



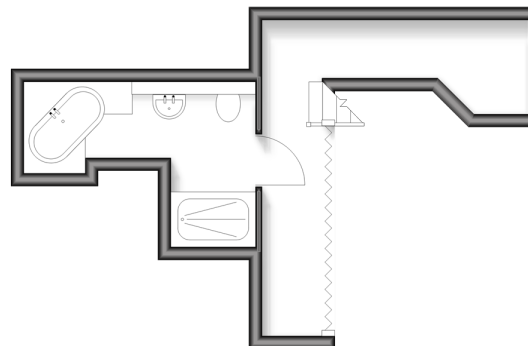
First Floor

Approx. 70.5 sq. metres (759.0 sq. feet)



Second Floor

Approx. 14.5 sq. metres (156.3 sq. feet)



Accommodation

GROUND FLOOR

Lounge: 28'8 x 18'1 (8.74m x 5.52m)
Dining Room: 20'12 x 10'7 (6.40m x 3.23m)
Kitchen: 18'6 x 12'5 (5.64m x 3.79m)
Utility
Shower Room

FIRST FLOOR

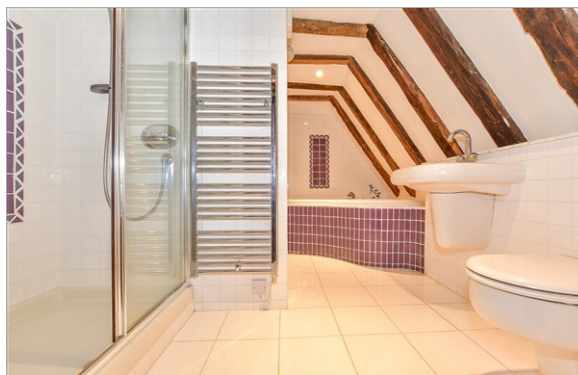
Landing
Bedroom 1: 16'3 x 15'8 (4.96m x 4.78m)
Bedroom 2: 15'9 x 13'10 (4.80m x 4.22m)
Bedroom 3: 12'8 x 6'2 (3.86m x 1.88m)
Bathroom

SECOND FLOOR

Bathroom to Bedroom 1

OUTSIDE

Driveway and Double Garage
Front and Rear Gardens
Summer House and Storage



Main features

- Character period property dated from 1350
- Two family bathrooms and en-suite from bedroom one
- Private location with electric gates leading to a double garage
- Set on a lovely sized plot with additional out building
- No Chain



Nearest Schools

Primary Schools: Smarden Primary 0.8 miles, John Mayne C of E Primary, Biddenden 3.3 miles, Bethersden Primary 3.7 miles
Secondary Schools: Homewood School and Sixth Form Centre 5.9 miles, Sutton Valence School 7.5 miles, High



Transport Information

Train Stations: Headcorn 3.6 miles, Pluckley 4.1 miles, Marden 8.2 miles



Address

Bethersden Road, Smarden, Ashford, Kent, TN27



Directions

For directions to this property please contact us.



Call Headcorn Branch 01622 890435 ■ wardsofkent.co.uk



- If buying to let, the energy rating will need to be improved to at least 'E' rating before you can let the property
- Appliances & services are untested, dimensions are approximate and floor plans are not to scale

- Legal advice should be taken to verify fixtures/fittings, planning, alterations and/or lease details
- Through a Homewise Home For Life Plan people aged 60+ can secure this property for up to 50% less, by purchasing a Lifetime Lease

12722094/20250823/DB/KMC