



14 Mead Road, Chandler's Ford, SO53 2EZ

£440,000

Located on Mead Road in central Chandler's Ford, this delightful detached bungalow offers a perfect blend of comfort and convenience. With three well-proportioned bedrooms, this property is ideal for those seeking an easily maintained home for retirement. The bungalow is presented to a high standard throughout, ensuring that you can move in with ease and start enjoying your new home immediately. One of the standout features of this property is its no forward chain status, allowing for a smooth and straightforward purchase process. Situated in a central location, you will find yourself within walking distance of the vibrant centre of Chandler's Ford, where a variety of shops, cafes, and amenities await. For those who commute and desire more extensive shopping, excellent transport links are readily available, with buses providing easy access to both Winchester and Southampton, as well as a nearby railway station. The property boasts a driveway and a garage, providing ample parking space and additional storage options. The L-shaped garden is a true highlight, offering a delightful outdoor space with a southerly and westerly aspect, perfect for enjoying the sun throughout the day. This bungalow presents an excellent opportunity for anyone looking to settle in a well-connected and friendly community. Don't miss the chance to make this charming property your new home.

ACCOMMODATION

Ground Floor

Reception hall:

Hatch to loft space.

Sitting room:

19'11" x 10'11" (6.07m x 3.33m) Double doors to rear garden.

Kitchen:

15'2" x 9'7" (4.63m x 2.92m) Range of shaker style units, electric oven and hob with extractor hood over, integrated dishwasher, space and plumbing for further appliances, cupboard housing boiler.

Garden/Dining room:

13'11" x 5'10" (4.24m x 1.79m) Door to outside.

Bedroom 1:

12'0" x 10'11" (3.66m x 3.33m)

Bedroom 2:

11'11" x 10'11" (3.63m x 3.33m)

Bedroom 3:

10'11" x 8'4" (3.33m x 2.54m)

Bathroom:

Suite comprising bath with mixer tap, separate shower unit with glazed screen, wash basin with cupboard under, WC, tiled walls and floor.

OUTSIDE

Front:

To the front of the property is a driveway leading to a detached garage.

Rear:

The rear garden provides a paved area and enjoys a westerly aspect.

Side:

The side garden enjoys a southerly aspect with lawned area, enclosed by fencing.

Garage:

16'6" x 8'1" (5.03m x 2.46m)

OTHER INFORMATION

Tenure:

Freehold

Approximate Age:

1950

Approximate Area:

1090 sq ft x 101.2 sq m

Sellers Position:

No forward chain

Heating:

Gas central heating

Windows:

UPVC Double glazing

Loft Space:

Boarded, ladder connected and light connected

Infant/Junior School:

Chandler's Ford Infant School / Merdon Junior School

Secondary School:

The Toynbee School

Local Council:

Eastleigh Borough Council - 02380 688000

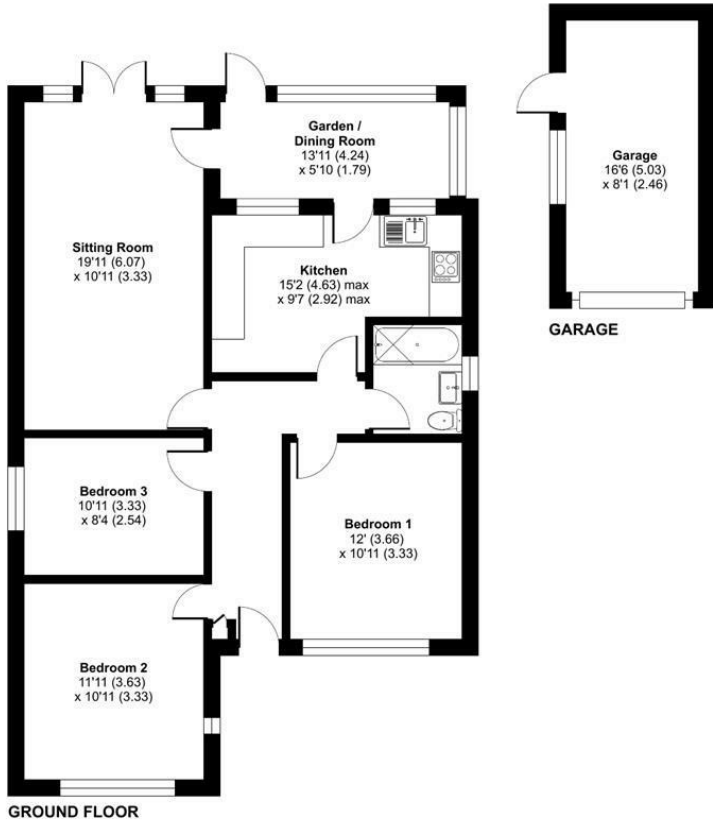
Council Tax:

Band D

Agents Note:

If you have an offer accepted on a property we will need to, by law, conduct Anti Money Laundering Checks. There is a charge of £60 including vat for these checks regardless of the number of buyers involved

Ground Floor = 957 sq ft / 88.9 sq m
 Garage = 133 sq ft / 12.3 sq m
 Total = 1090 sq ft / 101.2 sq m
 For identification only - Not to scale



Energy Efficiency Rating		Current	Potential
Very energy efficient - lower running costs			
(92 plus) A			
(81-91) B			
(69-80) C			
(55-68) D		65	76
(39-54) E			
(21-38) F			
(1-20) G			
Not energy efficient - higher running costs			
England & Wales		EU Directive 2002/91/EC	

Floor plan produced in accordance with RICS Property Measurement 2nd Edition, Incorporating International Property Measurement Standards (IPMS2 Residential). © richcom 2026. Produced for Sparks Ellison. REF: 1424036

94 Winchester Road, Chandler's Ford, Hampshire, SO53 2GJ

Sales: t: 02380 255333 e: property@sparksellison.co.uk

Lettings: t: 02380 018518 e: lettings@sparksellison.co.uk

While we endeavour to make our sales particulars fair, accurate and reliable, they are only a general guide to the property and, accordingly, if there is any point which is of particular importance to you please contact the office and we will be pleased to check it for you, especially if you are contemplating travelling some distance to view the property. These approximate room sizes are only intended as general guidance. You must verify the dimensions carefully before ordering carpets or any built in furniture. Please note we have not tested the services or any of the equipment or appliances in this property, accordingly we strongly advise prospective buyers to commission their own survey or service report before finalising their offer to purchase. These particulars are issued in good faith but do not constitute representations of fact or form part of any offer or contract. The matters referred to in these particulars should be independently verified by prospective buyers or tenants. Neither Sparks Ellison nor any of its employees or agents has any authority to make or give any representation or warranty whatever in relation to this property. Your home is at risk if you do not keep up repayments on a mortgage or other loan secured on it. Written quotations available on request. All loans secured on property. Life assurance usually required.



