



213 Newbold Road, Chesterfield, S41 7AB

Price Guide £415,000

- 4 Bedroom detached home
- Enclosed rear garden with multiple seating areas
- Great location with good schools, local shops and Chesterfield town centre all close to hand
- 3 reception rooms, ideal for families
- Kichen diner
- Master bedroom with ensuite shower room
- Modern bathroom recently fitted to hand
- Off street parking and garage
- Gated entry to the property
- GCH and double glazing throughout



Newbold Road, S41

DETAILS
Total area: 1167.16 sq ft



Square Box Media
info@squareboxmedia.com
www.squareboxmedia.com

This floorplan is provided without any warranty. The actual size of dimensions may vary and this floorplan is intended for illustrative purposes only.

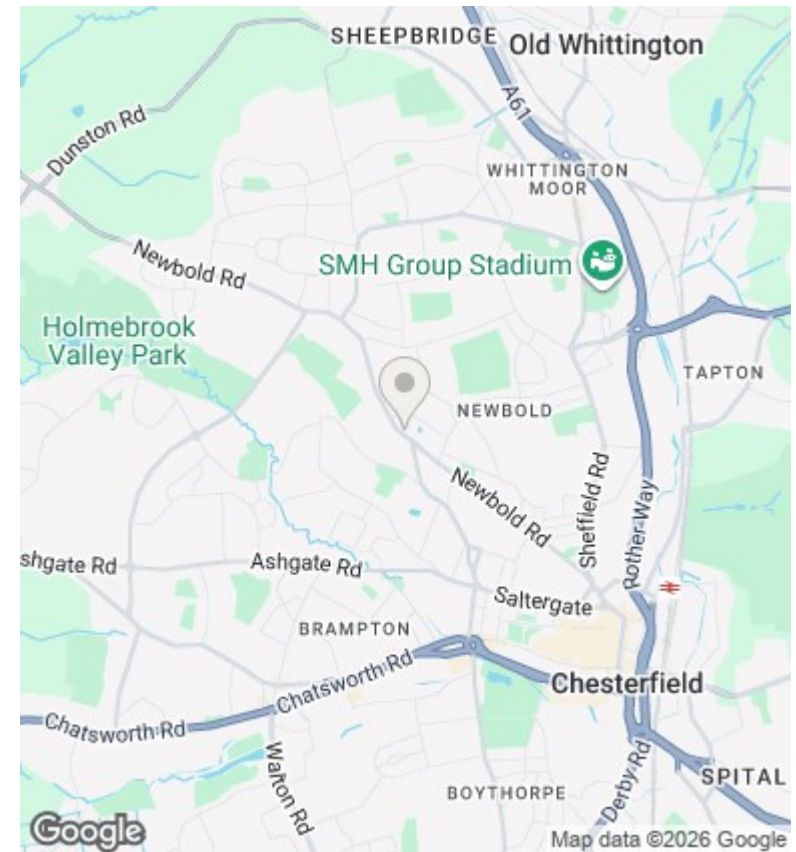
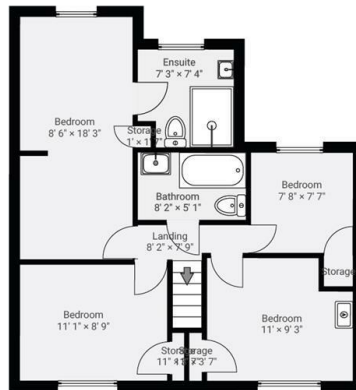
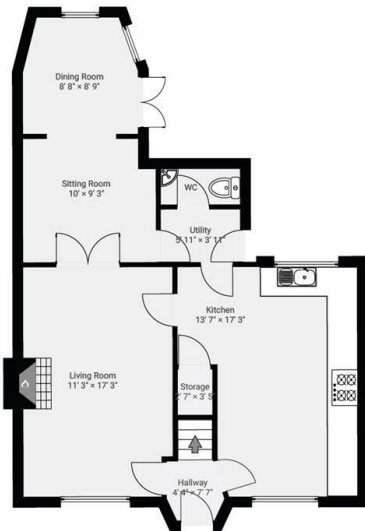


▼ **Ground Floor**

TOTAL AREA: 627.44 sq ft - LIVING AREA:

▼ **1st Floor**

TOTAL AREA: 539.73 sq ft



Directions

Viewings

Viewings by arrangement only. Call 01246 276 276 to make an appointment.

Council Tax Band

B

EPC Rating:

D

Energy Efficiency Rating		Current	Potential
<i>Very energy efficient - lower running costs</i>			
(92 plus) A			82
(81-91) B			
(69-80) C			
(55-68) D		64	
(39-54) E			
(21-38) F			
(1-20) G			
<i>Not energy efficient - higher running costs</i>			
England & Wales		EU Directive 2002/91/EC	