



**Trueman
Letting
Company**



Flat A 26-27 Downing Street Surrey

£1,750 PCM

A very well presented three double bedroom two bathroom apartment finished to a high specification and located in the heart of Farnham Town Centre within walking distance of the Mainline station and all local amenities. The property has an allocated parking space. Council Tax Band B. EPC D



- Large open plan kitchen/ living space • Integrated appliances • Three double bedrooms • En-suite bathroom to master bedroom

ENTRANCE HALL

Entrance hallway with security entry phone system

OPEN PLAN LOUNGE / KITCHEN / DINER

Open plan living accommodation comprising of a modern fitted kitchen with integrated appliances, dining area and spacious lounge

MASTER BEDROOM

Master bedroom with fitted wardrobes

ENSUITE

En-suite bathroom to the main bedroom

TWO FURTHER DOUBLE BEDROOMS

Two double bedrooms both with fitted wardrobes

SHOWER ROOM

Modern fitted shower room with W/C

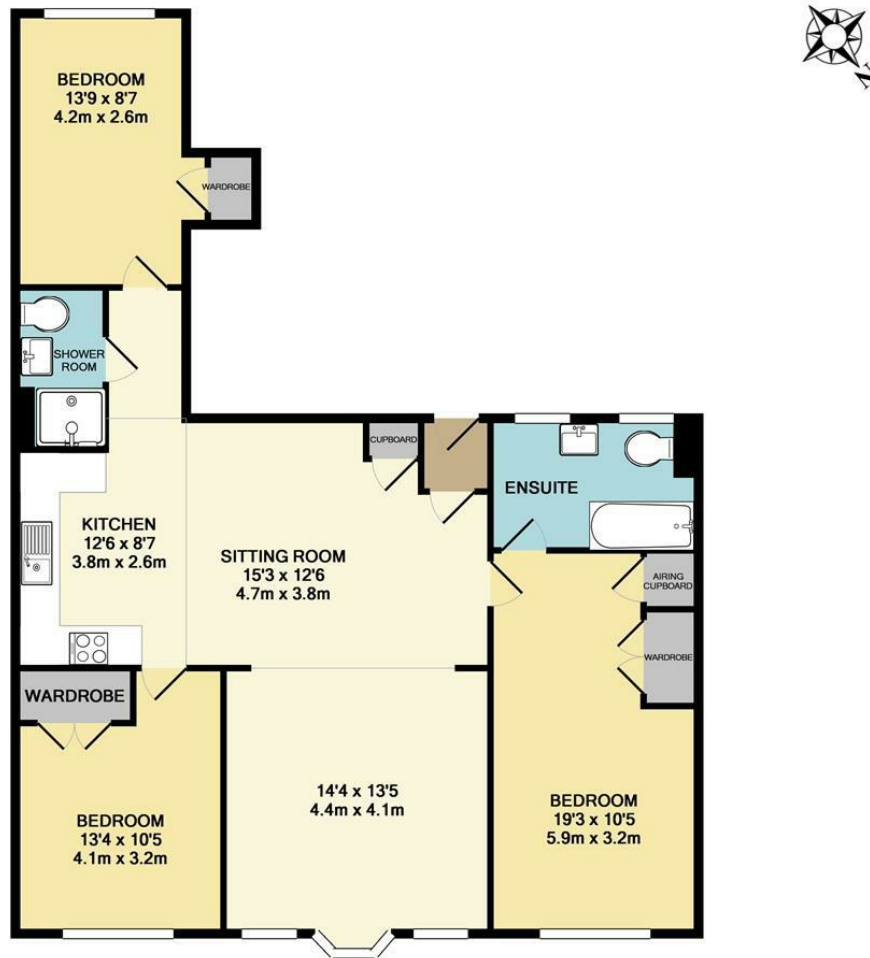
PARKING

Allocated parking spaces to the rear of the property



- Shower room with EC • Allocated parking • Town centre • EPC D COUNCIL TAX BAND B





TOTAL APPROX. FLOOR AREA 1068 SQ.FT. (99.2 SQ.M.)

Whilst every attempt has been made to ensure the accuracy of the floor plan contained here, measurements of doors, windows, rooms and any other items are approximate and no responsibility is taken for any error, omission, or mis-statement. This plan is for illustrative purposes only and should be used as such by any prospective purchaser. The services, systems and appliances shown have not been tested and no guarantee as to their operability or efficiency can be given
Made with Metropix ©2014



Energy Efficiency Rating		
	Current	Potential
Very energy efficient - lower running costs		
(92 plus) A		
(81-91) B		85
(69-80) C		
(55-68) D	62	
(39-54) E		
(21-38) F		
(1-20) G		
Not energy efficient - higher running costs		
England & Wales		EU Directive 2002/91/EC

Agents Note: Whilst every care has been taken to prepare these particulars, they are for guidance purposes only. All measurements are approximate and are for general guidance purposes only and whilst every care has been taken to ensure their accuracy, they should not be relied upon and potential buyers/tenants are advised to recheck the measurements

Trueman Letting Company Lettings 01252 711227
5a Castle Street
Farnham
Surrey
GU9 7HR
lettings@tlc-farnham.co.uk
www.tlc-farnham.co.uk

