



Onslow Crescent, SW7

£1,350,000

Dexters



Onslow Crescent, SW7

A large and bright first floor flat located in a portered building in the heart of South Kensington. The accommodation offers two double bedrooms with excellent storage, two bathrooms and a utility room providing optimal convenience. There is a spacious reception room with separate dining area leading to a fully fitted kitchen.

Throughout the property, there is a consistent sense of care and understated style, with classic finishes, well-proportioned rooms, and an abundance of natural light. This is a home that offers both immediate comfort and exciting potential, perfectly suited to those seeking space, charm, and a superb living environment. The living and dining areas flow seamlessly, creating an ideal setting for both relaxed evenings and entertaining guests.

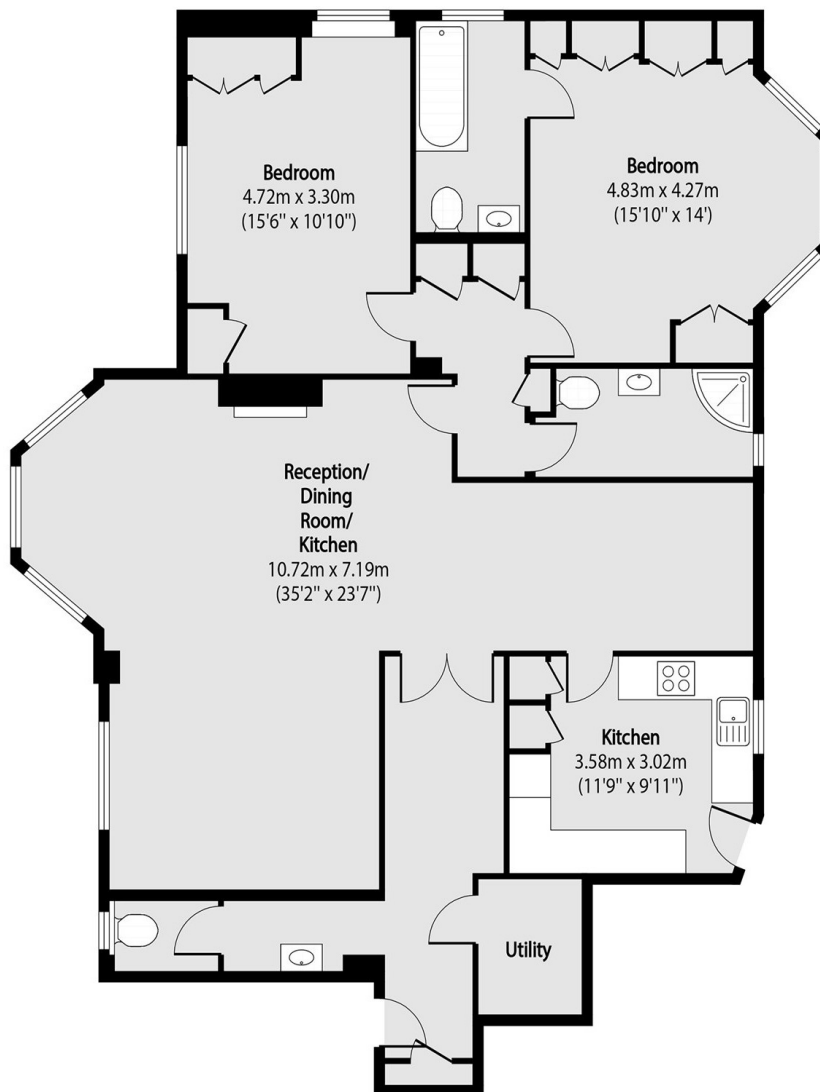
Perfectly located opposite South Kensington Station, this property provides excellent transport links across London. It further benefits from the amenities of both Chelsea and South Kensington, as well as being only a short walk away from the serenity of Hyde Park.

Features

- Two Double Bedrooms
- Long Lease 900+ years
- Two Bathrooms
- Large Reception
- Separate Dining Area
- Close To Amenities



Onslow Crescent, London, SW7



Total area (approx): 124.58 sq m (1341 sq. ft)