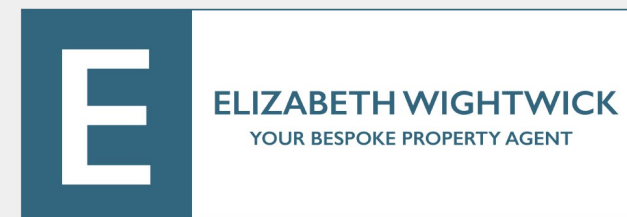


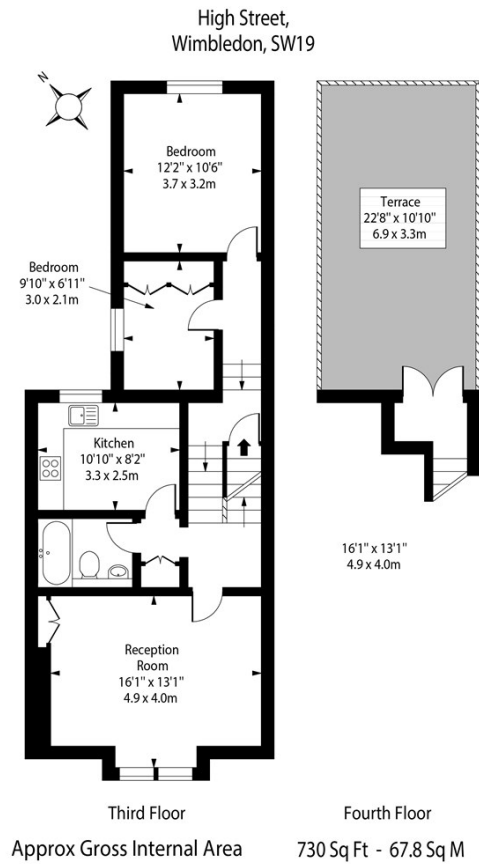


## FLAT 4,74 HIGH STREET WIMBLEDON LONDON, SW19 5EG

£2,750 PCM

Situated in a PRIME location in the heart of Wimbledon Village, this fantastic TWO bedroom apartment is a short walk from Wimbledon Town Centre, local boutique shops, restaurants and bars, Easy ACCESS to Wimbledon Station. The apartment consists of two DOUBLE bedrooms, bathroom and spacious kitchen and a beautiful ROOF TERRACE with AMAZING views over London. . Offered Unfurnished.





Approx Gross Internal Area 730 Sq Ft - 67.8 Sq M

For Illustration Purposes Only - Not To Scale  
photosandfloorplans.com ©



Energy Efficiency Rating		
	Current	Potential
Very energy efficient - lower running costs		
(92 plus) <b>A</b>		
(81-91) <b>B</b>		
(69-80) <b>C</b>		
(55-68) <b>D</b>		
(39-54) <b>E</b>		
(21-38) <b>F</b>		
(1-20) <b>G</b>		
Not energy efficient - higher running costs		
<b>England &amp; Wales</b>	EU Directive 2002/91/EC	

Agents Note: Whilst every care has been taken to prepare these particulars, they are for guidance purposes only. All measurements are approximate and are for general guidance purposes only and whilst every care has been taken to ensure their accuracy, they should not be relied upon and potential buyers/tenants are advised to recheck the measurements

Elizabeth Wightwick Bespoke Sales & Lettings  
Office 10  
60 High Street  
Wimbledon Village  
Wimbledon  
London  
SW19 5EE

020 3597 3484  
info@elizabeth-wightwick.co.uk

