



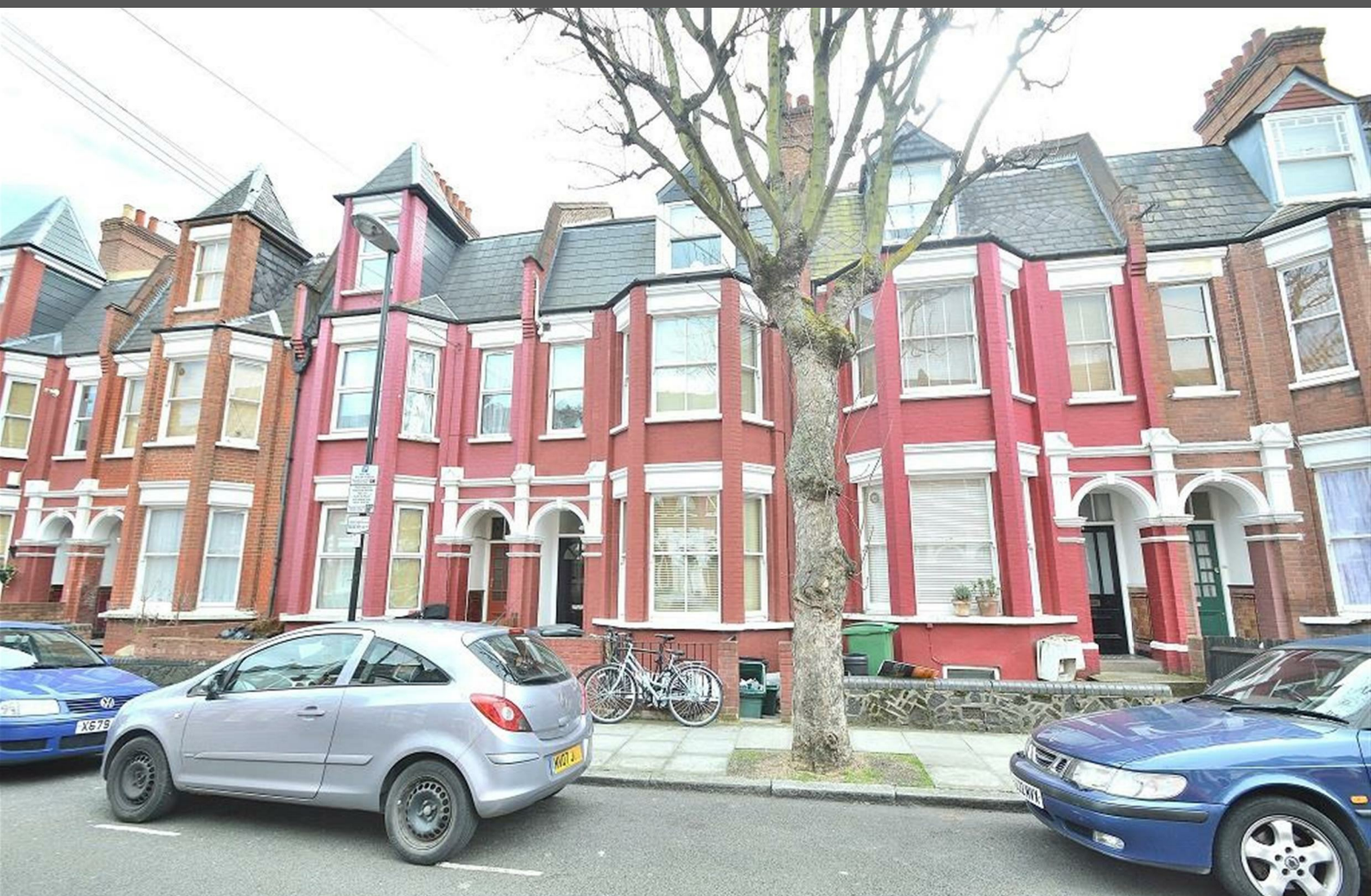
ABSOLUTE
PROPERTY

Sopers House, Soper Road, Cuffley EN6 4RY

☎ 020 8882 8156 📠 020 8882 8155

✉ info@absolutepropertyagents.com

🌐 www.absolutepropertyagents.com

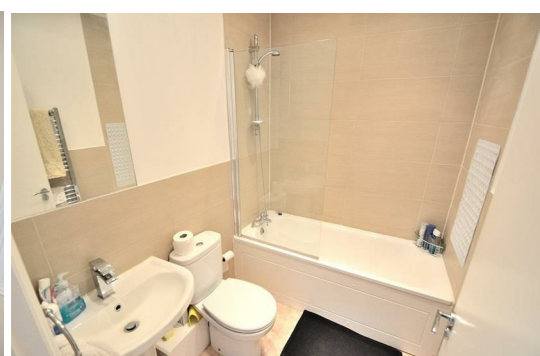
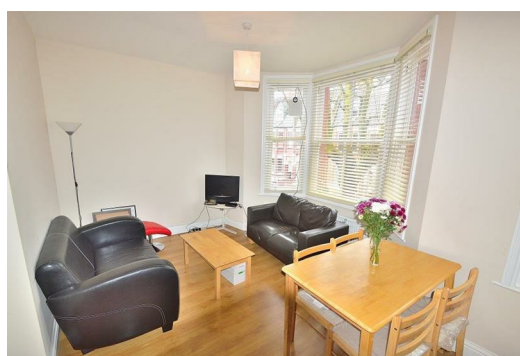


**48 Birnam Road, London
N4 3LQ**

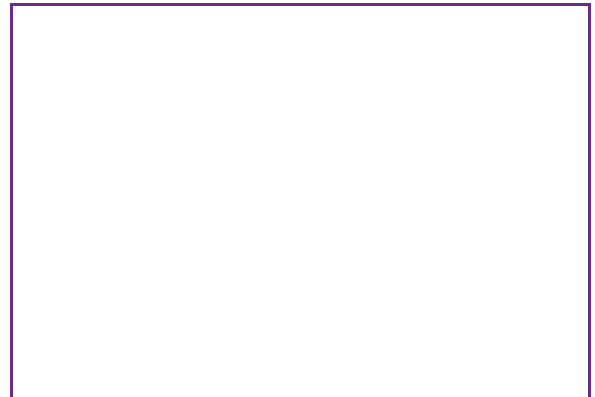
£1,950 PCM

This stylish two bedroom apartment is set over two levels and has just been refurbished to provide modern living. The property boasts an integrated high gloss kitchen, a white three piece bathroom suite with shower over bath and wooden flooring to the lounge and bedrooms. With neutral decoration and features including gas central heating and sash windows, the flat has a light and comfortable feel. The property is ideal for commuters with Finsbury Park tube station within easy walking distance and the park itself offering a perfect spot to enjoy any spare time.

Available early August 2026



48 Birnam Road, London
N4 3LQ



Energy Efficiency Rating		Environmental Impact (CO ₂) Rating	
Current	Potential	Current	Potential
81	82	79	80
Energy Efficiency Rating: A (Green), B (Yellow-Green), C (Yellow), D (Orange), E (Red-Orange), F (Red), G (Dark Red)		Environmental Impact (CO ₂) Rating: A (Green), B (Yellow-Green), C (Yellow), D (Orange), E (Red-Orange), F (Red), G (Dark Red)	
England & Wales		England & Wales	