
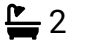



Trinity Way, Shirley, Solihull, B90 3FF

Offers In Region Of £330,000

 3  2  1

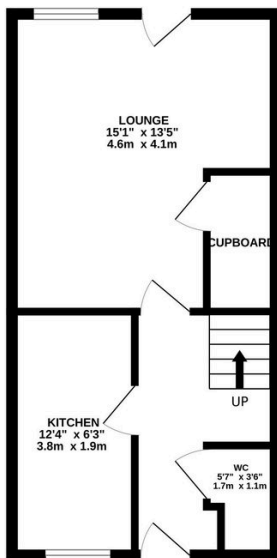


A beautifully presented three-bedroom townhouse located on Trinity Way, B90, just moments from the heart of Shirley offered for sale with NO UPWARD CHAIN.

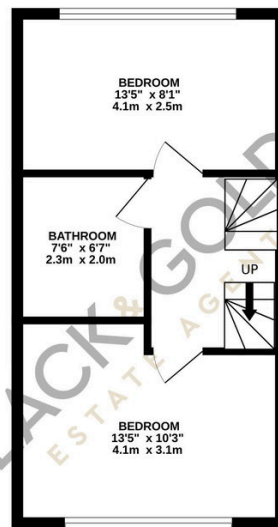
Key Features

- Beautifully presented three-bedroom townhouse
- Arranged over three well-planned floors
- Spacious living room with storage cupboard
- Two first-floor double bedrooms
- Allocated parking space in gated development
- Sought-after location on Trinity Way, B90
- Stylish fitted kitchen with integrated appliances
- Private, low-maintenance garden
- Main bedroom with large en-suite on top floor
- No upward chain

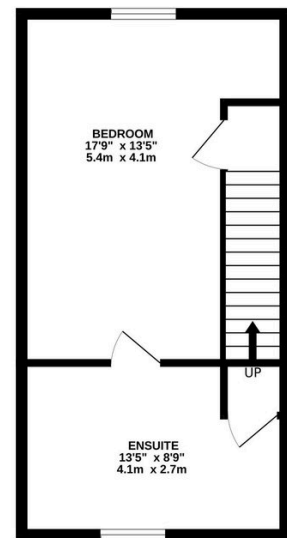
GROUND FLOOR
368 sq.ft. (34.1 sq.m.) approx.



1ST FLOOR
346 sq.ft. (32.1 sq.m.) approx.



2ND FLOOR
354 sq.ft. (32.9 sq.m.) approx.



TOTAL FLOOR AREA : 1067 sq.ft. (99.1 sq.m.) approx.

Whilst every attempt has been made to ensure the accuracy of the floorplan contained here, measurements of doors, windows, rooms and any other items are approximate and no responsibility is taken for any error, omission or mis-statement. This plan is for illustrative purposes only and should be used as such by any prospective purchaser. The services, systems and appliances shown have not been tested and no guarantee as to their operability or efficiency can be given.
Made with Metropix ©2026

