



Grosvenor Gardens

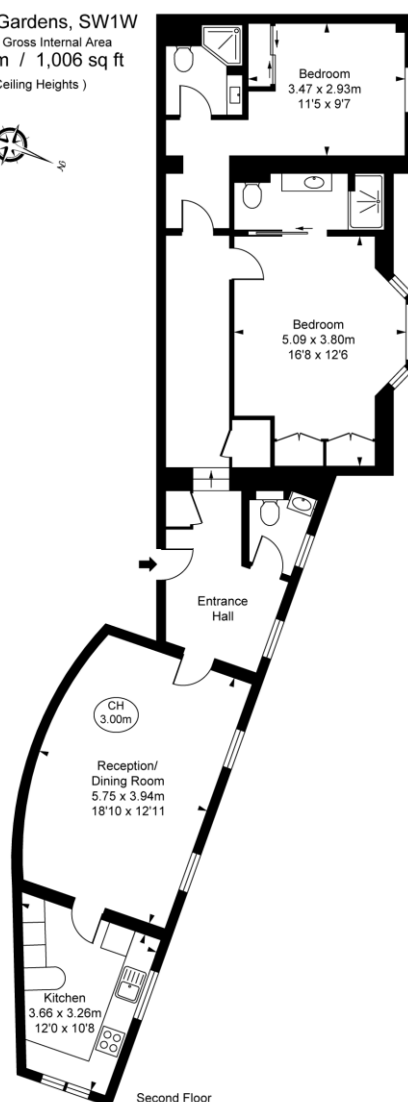
London, SW1W

Beautifully presented lateral apartment of circa 1,006 sq ft, with lift access. Ideally located just south of Green Park, in walking distance to Victoria Station and Hyde Park. Features include stunning three-metre high ceilings in the main reception.

£5,048.33 per month
(£1,165 per week)

CHESTERTONS

Grosvenor Gardens, SW1W
Approximate Gross Internal Area
93.47 sq m / 1,006 sq ft
(CH = Ceiling Heights)



Minimum Term: 12 months
Deposit Required: £6,990.00
Local Authority: City of Westminster
Council Tax Band: H
EPC Rating: E
Furnished

Energy Efficiency Rating		
	Current	Potential
Very energy efficient - lower running costs		
(32+)	A	
(81-91)	B	
(69-80)	C	76
(55-68)	D	
(39-54)	E	54
(21-38)	F	
(1-20)	G	
Not energy efficient - higher running costs		
England, Scotland & Wales		
EU Directive 2002/91/EC		

Chestertons Knightsbridge & Belgravia Lettings

31 Lowndes Street
London
SW1X 9HX
knightsbridge@chestertons.co.uk
02072353530
chestertons.co.uk

Additional tenant charges apply (fees apply to non-AST tenancies only)

Tenancy Agreement Fee: £300

References per Tenant/Guarantor: £60

Inventory check (approx. £100 – £250 inc. VAT)

chestertons.co.uk/property-to-rent/applicable-fees

Chesterton Global Ltd trading as Chestertons for themselves and for the vendor of this property whose agents they are, give notice that (i) these particulars do not constitute any part of an offer or contract, (ii) all statements contained within these particulars are made without responsibility on the part of Chestertons or the vendor, (iii) whilst made in good faith, none of the statements contained within these particulars are to be relied upon as a statement or representation of fact, (iv) any intending purchasers must satisfy themselves by inspection or otherwise as to the correctness of each of the statements contained within these particulars, (v) the vendor does not make or give either Chestertons or any person in their employment any authority to make or give representation or warranty whatsoever in relation to this property. Wide angle lenses may be used. ©Copyright Chestertons | Chesterton Global Ltd | Registered Office 40 Connaught Street, Hyde Park, London W2 2AB Registered Company Number 05334580.



This paper is
100% recyclable