



Sydner Road, N16

£800,000

Dexters



Sydner Road, N16

A beautifully designed two bedroom garden flat within a Victorian end of terrace. Measuring over 1,200 sq ft this property has been renovated throughout to a high standard by its current owners with Crittal Doors, underfloor heating, parquet oak flooring and bespoke kitchen with Hi-Macs worktop. The property has a large private garden with street access, cellar with potential to extend and a Share of the Freehold.

The many shops, cafés and restaurants of Stoke Newington Church Street, Shacklewell Lane, Mare Street and Kingsland High Street are withing close proximity as well as Hackney Downs Park and Clissold Park. Rectory Road Overground is half a mile away offering direct trains into the transport hub Liverpool Street.

Features

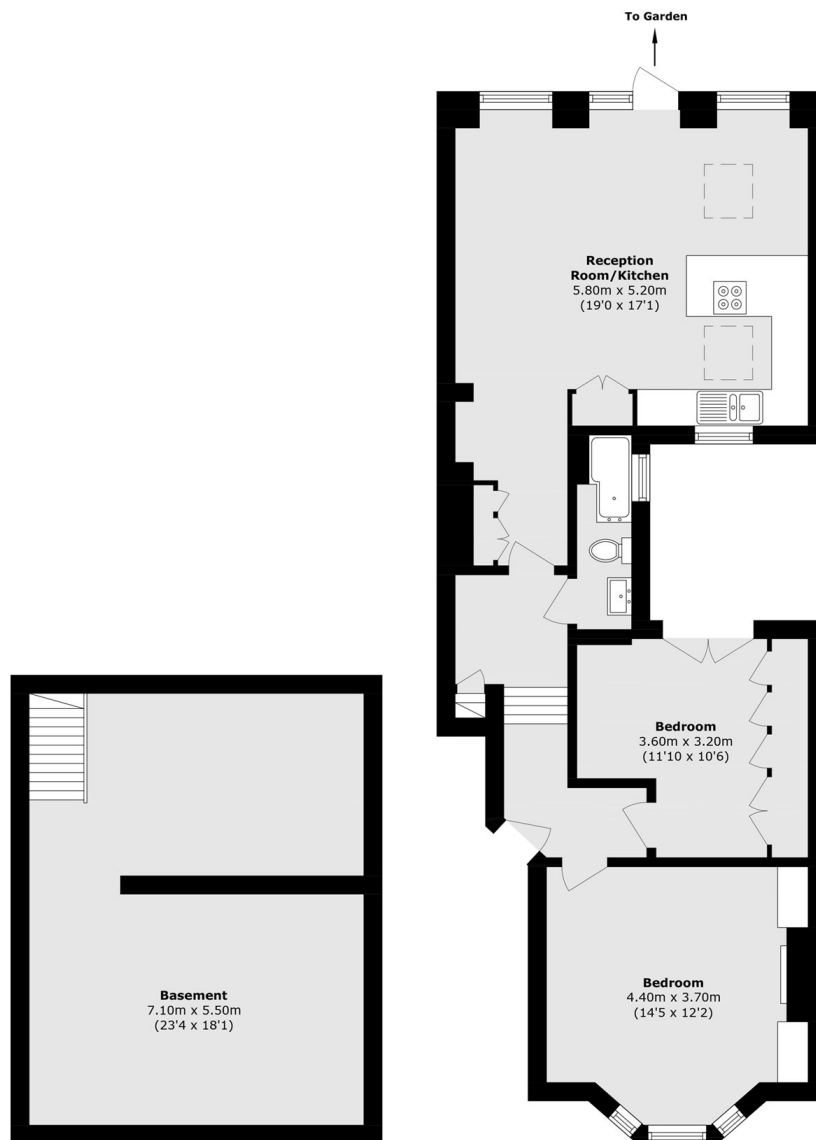
- Victorian End of Terrace
- Renovated Throughout
- Two Double Bedrooms
- Share of Freehold
- Over 1,200 sq ft
- Private Garden







Sydner Road, London, N16



Basement

Ground Floor

Total area (approx.): 114.9 sq. m (1236.7 sq. ft)
(Including Basement)