

# Northfield Road

Maidenhead • • SL6 7JP  
: £425,000



coopers  
est 1986



# Northfield Road

Maidenhead • • SL6 7JP

\*NO CHAIN\*

Charming Two-Bedroom Home Featuring A  
South-Facing Rear Garden And Two Allocated  
Parking Spaces.

Modernised Throughout

Two Allocated Parking Spaces

South-Facing Garden

Residential Area

Open Plan Living/Dining

Front & Rear Garden

Perfect For First-Time Buyers

Maidenhead Town Centre Close By

Furze Platt Station Under A Mile

Amenities Nearby

These particulars are intended as a guide and must not be relied upon as statements of fact. Your attention is drawn to the Important Notice on the last page.







Upon entering, you are greeted by a welcoming hallway leading you to a well-appointed newly updated kitchen, complete with contemporary units and integrated appliances. With plenty of storage, an induction hob, and high-quality appliances from Bosch, Neff, and Zanussi, making it both stylish and functional.

The highlight of the home is the spacious living/dining room, which is bathed in natural light and opens onto the rear garden through French doors. The property features new oak laminate flooring throughout the ground floor, providing a sense of continuity and flow.

Upstairs, the property features two generously sized bedrooms, both with built-in storage, and a modern family bathroom.

Externally, this home benefits from two allocated parking spaces and a private south-facing rear garden, mainly laid to lawn with a spacious decking area, ideal for relaxing or entertaining.

Located in a quiet cul-de-sac, the property is close to Green Space (North Town Moor), perfect for those who enjoy rural walks. You can walk directly behind the moor, taking in the beautiful countryside, and even reach Cookham on foot. The area is within the catchment of outstanding schools, making it a great choice for families.

M Maidenhead station is just a short walk away, with the town centre and all its amenities also easily accessible. Additionally, you're within reach of Furze Platt and the Elizabeth Line, offering direct access to London.



### Schools:

Riverside Primary School and Nursery 0.1 miles  
 St Luke's CofE Primary School 0.3 miles  
 St Mary's Catholic Primary School, Maidenhead 0.4 miles



### Train:

Furze Platt Station 0.4 miles  
 Maidenhead Station 0.9 miles  
 Taplow Station 1.7 miles



### Car:

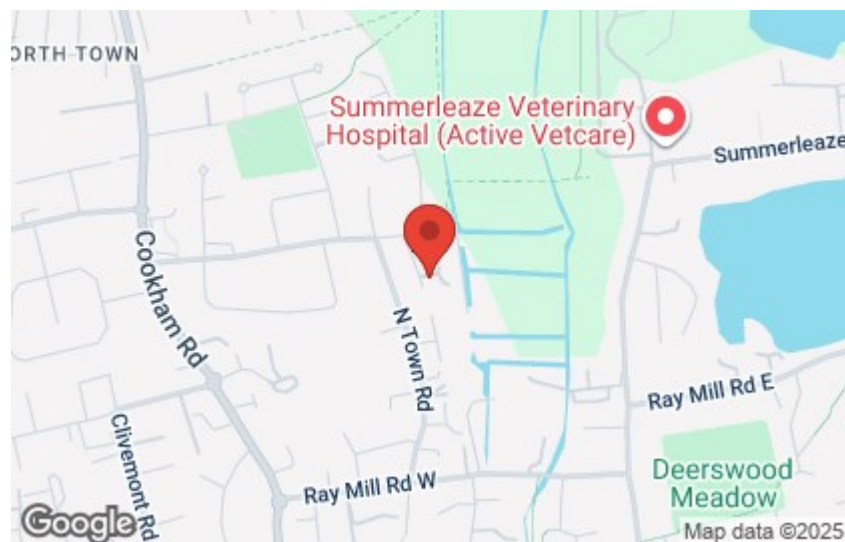
M4, A40, M25, M40



### Council Tax Band:

D

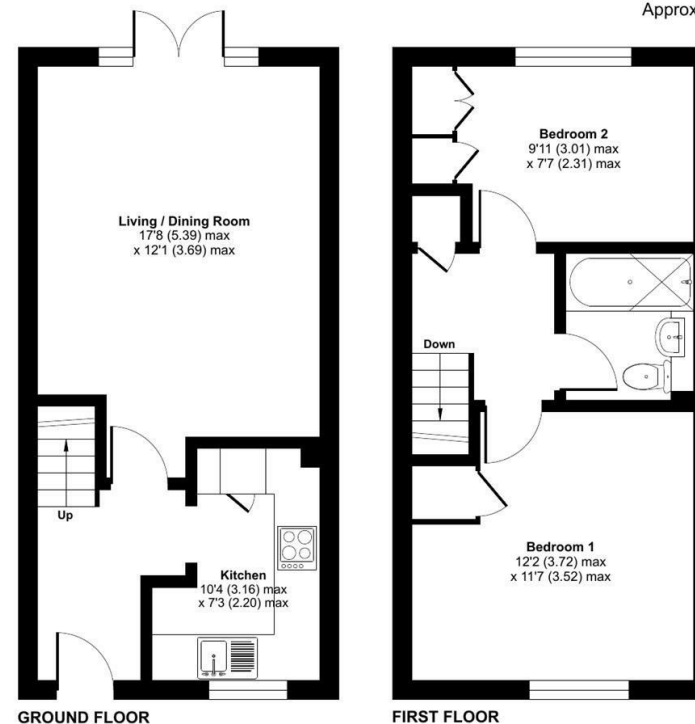
(Distances are straight line measurements from centre of postcode)



## Northfield Road, Maidenhead, SL6

Approximate Area = 640 sq ft / 59.4 sq m

For identification only - Not to scale



Floor plan produced in accordance with RICS Property Measurement 2nd Edition, incorporating International Property Measurement Standards (IPMS2 Residential). © nichecom 2025. Produced for Coopers. REF: 1261602

**coopers**  
 est 1986

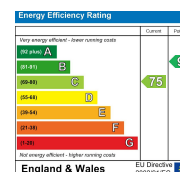
**coopers**  
 est 1986

01628 232 550

42 Queen Street, Maidenhead,  
 , SL6 1HZ

maidenhead@coopersresidential.co.uk

**CoopersResidential.co.uk**



Important Notice: These particulars, whilst believed to be accurate are set out as a general outline only for guidance and do not constitute any part of an offer or contract. Intending purchasers should not rely on them as statements or representation of fact, but must satisfy themselves by inspection or otherwise has the authority to make or give any representation or warranty in respect of the property.