



**Lambert Road, Brixton, SW2**

2 bedroom flat - conversion for sale

**£500,000**

Leasehold

## Property Details

An expansive two double bedroom apartment with a large South-facing shared garden, set within a handsome and detached double-fronted Victorian house. Generously arranged over the first floor, this bright and beautifully presented home benefits from high ceilings, large rooms, and charming character throughout. The impressive open-plan reception spans over six metres, bathed in natural light from a front-facing bay window overlooking a neighbouring playground. Ideal for entertaining, this sociable space flows into a sleek kitchen, fitted in 2020 with gloss cabinetry, integrated appliances, a metro-tiled splashback, and a breakfast bar. Both double bedrooms are well-proportioned and positioned at opposite ends of the home, offering privacy for sharers or guests. The huge principal bedroom enjoys serene garden views, while the second is also generous with another bay window. A stylish bathroom completes the internal layout. Another standout feature is the beautiful South-facing garden: a sunny, green haven shared by house-proud neighbours. Enhanced by the property's detached structure and recent double-glazing, this charming home offers tranquility and comfort in equal measure.

## Features

- Two double bedrooms
- South-facing shared Garden
- Detached Victorian conversion
- Two bay windows with high ceilings
- Fantastic dimensions throughout
- Large storage cupboard for this property in the communal area
- Sought-after residential road
- Close to Brockwell Park
- Within walking distance to the Northern and Victoria tube lines
- Chain-free

Council tax band C

EPC rating C (69)



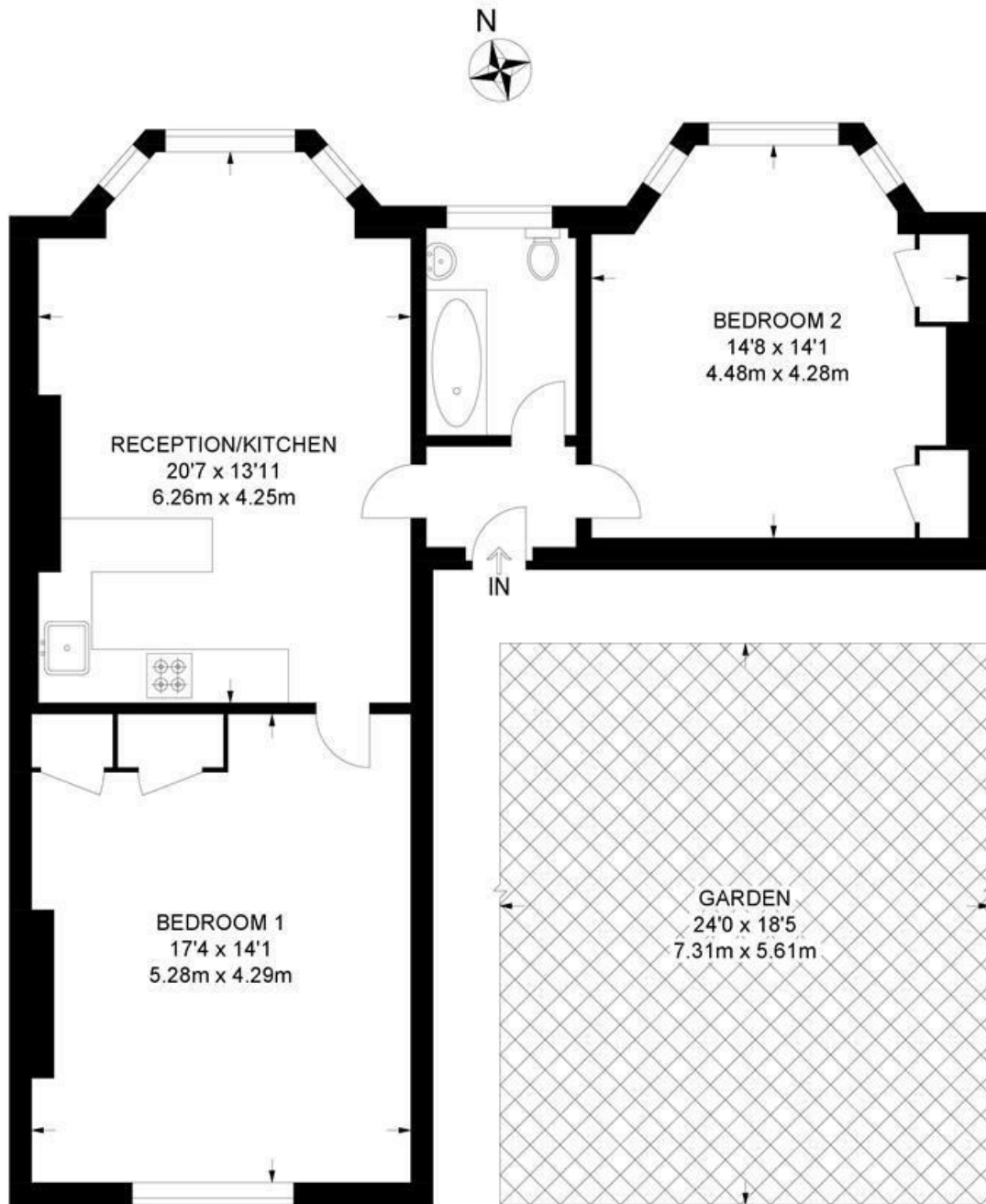




Lambert Road, Brixton, SW2

**Lambert Road, SW2**  
**2 Bedroom Flat**

APPROXIMATE GROSS INTERNAL AREA: **806 SQ FT / 75 SQ M**



**FIRST FLOOR**



While we try our very best, floor plans are produced as a guide only and we take no responsibility for the precise accuracy with which any property is represented.

Lambert Road, Brixton, SW2

