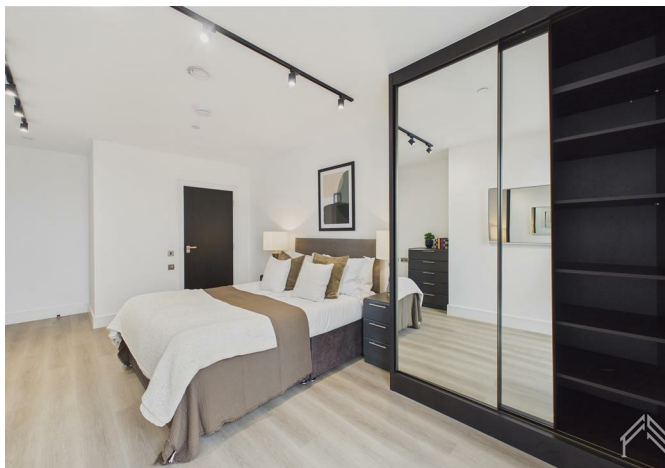




7645444 Mitre Way, North Kensington, London, London, NW10 6RH
£2,390 Per month





7645444 Mitre Way, North Kensington, London, London, NW10 6RH

£2,390 Per month

Modern 850 sq ft 1 Bed | Roof Terrace | 24h Gym | 24h Concierge | Parking | North Kensington's Most Prestigious New Address.

These exclusive apartments are finished to an exceptional standard and designed around the way you actually want to live with 24-hour concierge, a Technogym-equipped residents' gym, stunning roof terraces, and parking from just £70pcm. Every detail considered. Everything on your doorstep.

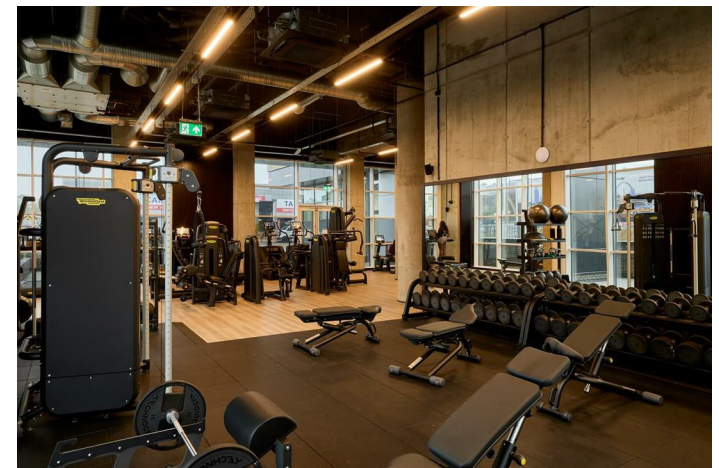
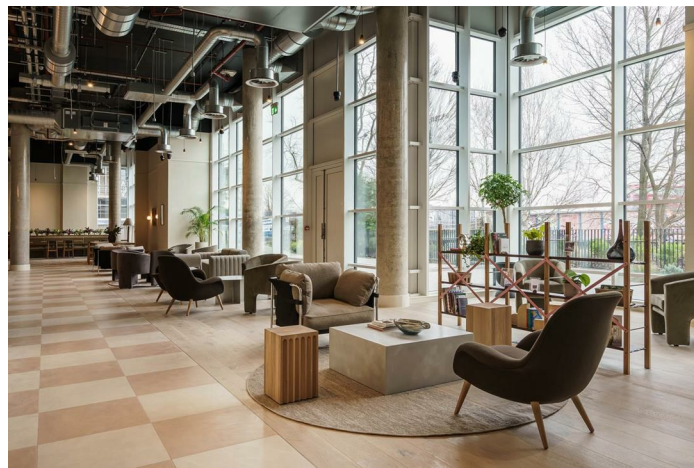
From the moment you move in, you're backed by a 24/7 concierge, responsive on-site maintenance, and a dedicated management team so whatever you need, support is never far away.

Step outside your front door and the building does the rest. Work up a sweat in the fully equipped gym, decompress across five beautifully landscaped rooftop terraces and courtyards, and connect with your community through exclusive resident events. And if your office is at home, the resident lounges and co-working spaces give you a polished, distraction-free environment to do your best work without stepping outside.

Description



Situation



Furnished/unfurnished

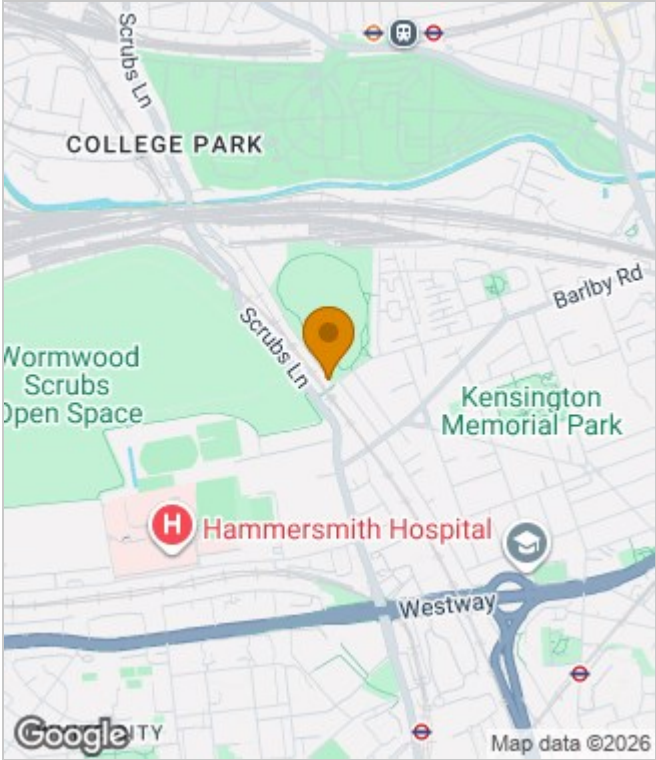
Council Tax Band: B

Available:

Floor Plans



Area Map



Energy Performance Graph

Energy Efficiency Rating		Current	Potential
Very energy efficient - lower running costs			
(92 plus) A			
(81-91) B		82	82
(69-80) C			
(55-68) D			
(39-54) E			
(21-38) F			
(1-20) G			
Not energy efficient - higher running costs			
England & Wales		EU Directive 2002/91/EC	

These particulars, whilst believed to be accurate are set out as a general outline only for guidance and do not constitute any part of an offer or contract. Intending purchasers should not rely on them as statements of representation of fact, but must satisfy themselves by inspection or otherwise as to their accuracy. No person in this firm's employment has the authority to make or give any representation or warranty in respect of the property.