



13 Crossbank

Lower Broughton Road | Salford | M7 2GX

£1,150 PCM

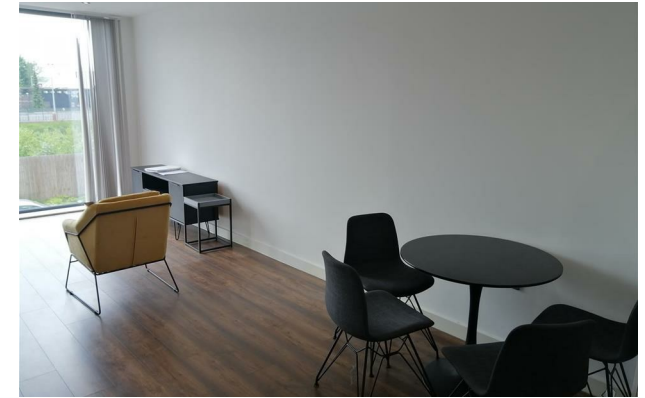


13 Crossbank

Lower Broughton Road |
Salford | M7 2GX
£1,150 PCM

2 BED, FURNISHED WITH PARKING. A stunning, newly completed two bedroom apartment in Crossbank, Salford. The 1st floor property comprises: entrance hall with storage cupboard, master bedroom with en suite shower room, second bedroom, bathroom with shower over bath, spacious open plan living & dining room with Juliet balcony & river views through to modern fitted kitchen. Located in Lower Broughton, on the banks of the River Irwell, close to Peel Park and Salford University and benefiting from excellent transport links to Manchester city centre. Photos show images of a similar apartment on the same floor.

- TWO BEDROOMS
- 1ST FLOOR
- STYLISH BATHROOM & EN SUITE TO MASTER BEDROOM
- PARKING
- NEWLY COMPLETED
- FURNISHED
- SPACIOUS OPEN PLAN LIVING & DINING ROOM
- 692 SQ FT
- RIVERSIDE DEVELOPMENT
- LOWER BROUGHTON LOCATION



Energy Efficiency Rating		
	Current	Potential
Very energy efficient - lower running costs		
(92 plus) A		
(81-91) B		
(69-80) C	76	76
(55-68) D		
(39-54) E		
(21-38) F		
(1-20) G		
Not energy efficient - higher running costs		
England & Wales	EU Directive 2002/91/EC	

68 Quay Street
Manchester
M3 3EJ
0161 513 2034
hello@thegea.co.uk
www.thegea.co.uk