



Guide Price
£375,000

Freehold

3x  2x  1x 

**Saltwood Road, Seaford,
East Sussex, BN25**

OVER 60?

Secure this property
for up to **59% less!**

cubitt&west
Helping you move forwards



Main features

- Located in a popular residential area
- Good sized modern kitchen/dining area
- Separate lounge with French doors to the rear garden
- Front and rear gardens with off road parking
- Good access to public transport

Accommodation

GROUND FLOOR

Entrance Hallway

Lounge: 18'0 x 10'9 (5.49m x 3.28m)

Kitchen/Dining Room: 18'0 x 15'7 (5.49m x 4.75m)

Inner hallway

Wet Room

FIRST FLOOR

Landing

Bedroom 1: 15'10 x 9'3 (4.83m x 2.82m)

Bedroom 2: 12'6 x 10'9 (3.81m x 3.28m)

Bedroom 3: 8'5 x 8'2 (2.57m x 2.49m)

Family bathroom

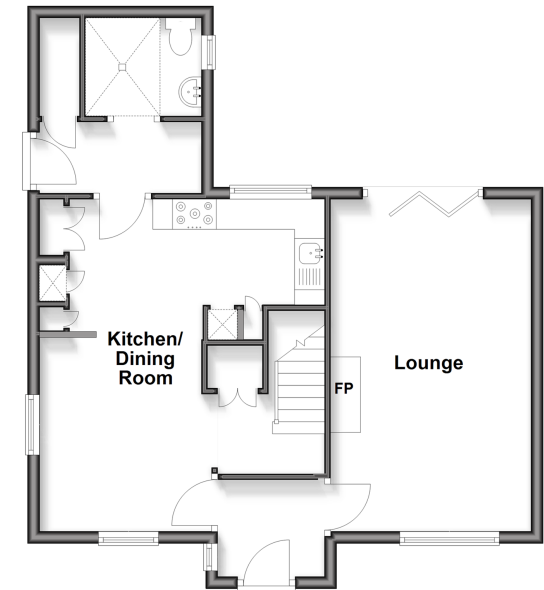
OUTSIDE

Front and rear gardens

Driveway

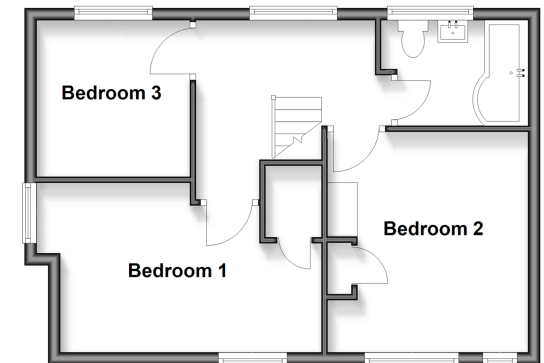
Ground Floor

Approx. 54.5 sq. metres (587.1 sq. feet)



First Floor

Approx. 44.5 sq. metres (478.5 sq. feet)



Call Peacehaven - 01273 584511 ■ cubittandwest.co.uk

- A private rental licensing scheme applies to some properties in this area, please contact us before proceeding
- Legal advice should be taken to verify fixtures/fittings, planning, alterations and/or lease details
- Appliances & services are untested, dimensions are approximate and floor plans are not to scale
- Through a Homewise Home For Life Plan people aged 60+ can secure this property for up to 50% less, by purchasing a Lifetime Lease.



31811194/20251018/CA/DGK