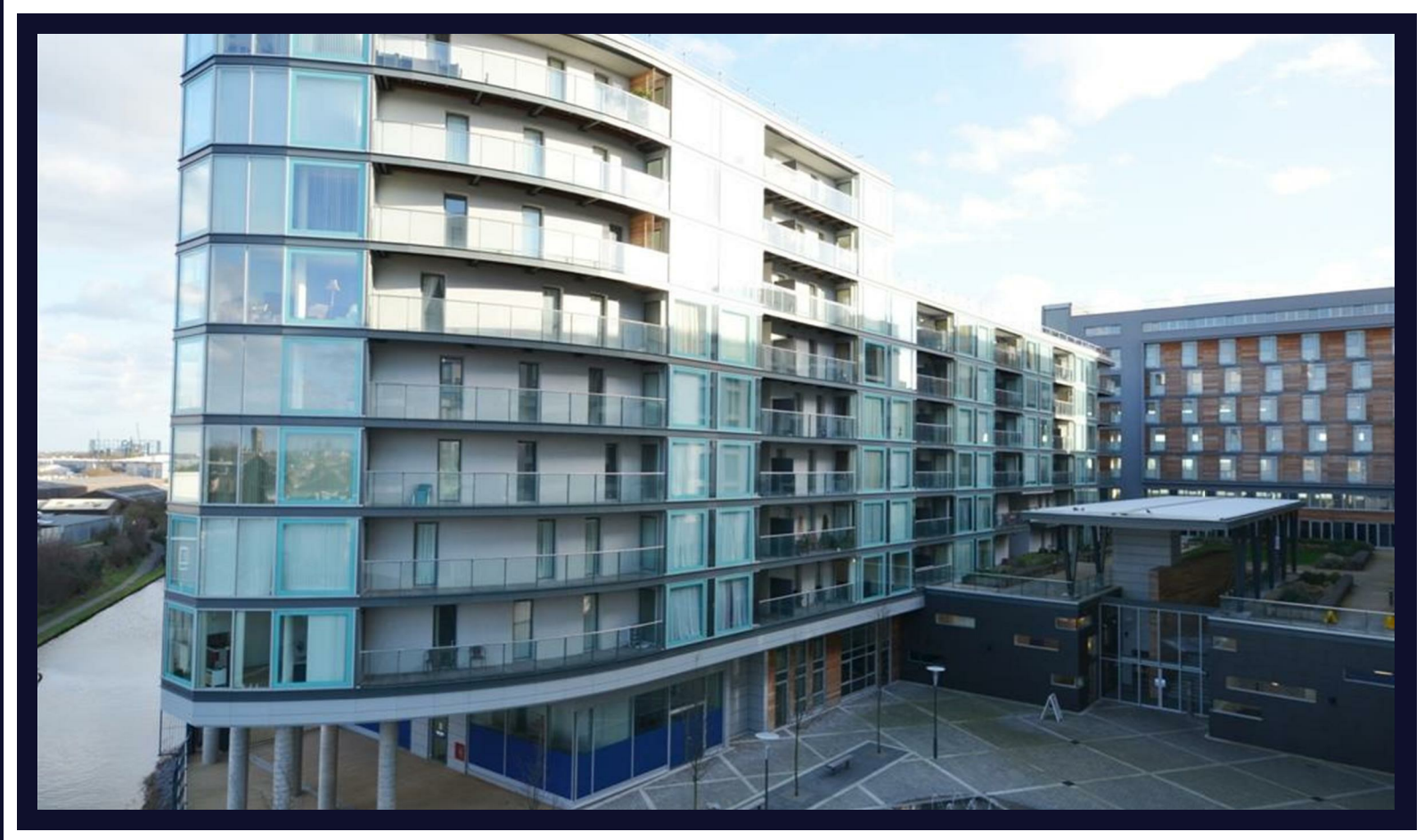


# Vantage Building

Hayes • Middlesex • UB3 4FA  
PCM: £1,450 PCM



coopers  
est 1986

A well presented apartment situated in a prime location for those who commute. Heathrow and central London are just moment away. Finished to a high specification throughout and just a stone's throw from Hayes & Harlington train station. Shopping facilities, bars and restaurants on your doorstep

Accommodation; Good size lounge with floor to ceiling windows and door leading to private balcony, bedroom with fitted wardrobe and door to balcony, Modern bathroom, fully fitted kitchen with appliances.

FURNISHED

Modern Development

Communal Gardens

Allocated Parking

Full Fitted Kitchen

Balcony

Fully Furnished

Minutes from Hayes and Harlington Station

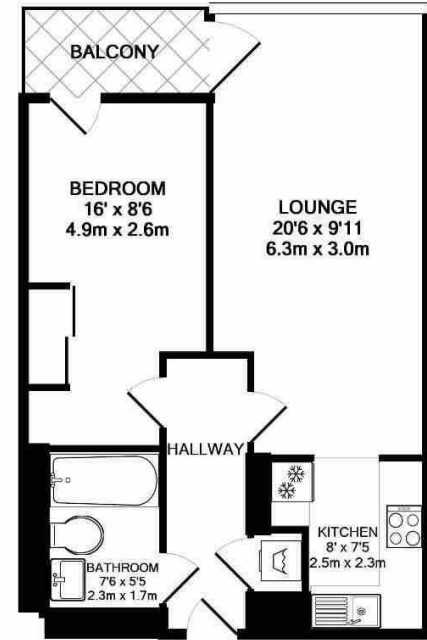
Easy access to Heathrow Airport

Council Tax Band C

EPC B

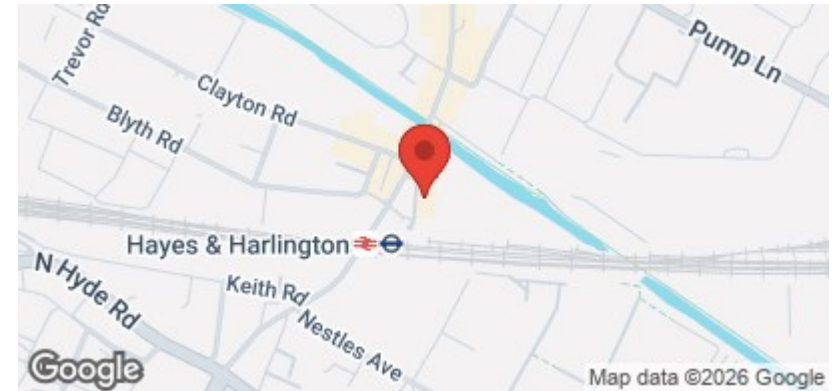
Available Date

7th August 2026



TOTAL APPROX. FLOOR AREA 471 SQ.FT. (43.8 SQ.M.)

Whilst every attempt has been made to ensure the accuracy of the floor plan contained here, measurements of doors, windows, rooms and any other items are approximate and no responsibility is taken for any error, omission, or mis-statement. This plan is for illustrative purposes only and should be used as such by any prospective purchaser. The services, systems and appliances shown have not been tested and no guarantee as to their operability or efficiency can be given  
Made with Metropix ©2015

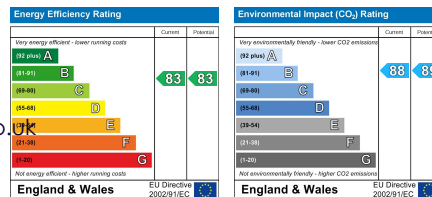


01895 257 566

1 Vine Street, Uxbridge,  
Middlesex, UB8 1QE

propertymanagement@coopersresidential.co.uk

CoopersResidential.co.uk



Important Notice: These particulars, whilst believed to be accurate are set out as a general outline only for guidance and do not constitute any part of an offer or contract. Intending purchasers should not rely on them as statements or representation of fact, but must satisfy themselves by inspection or otherwise has the authority to make or give any representation or warranty in respect of the property.

coopers  
est 1986