



## Inca Drive, SE9

£300,000

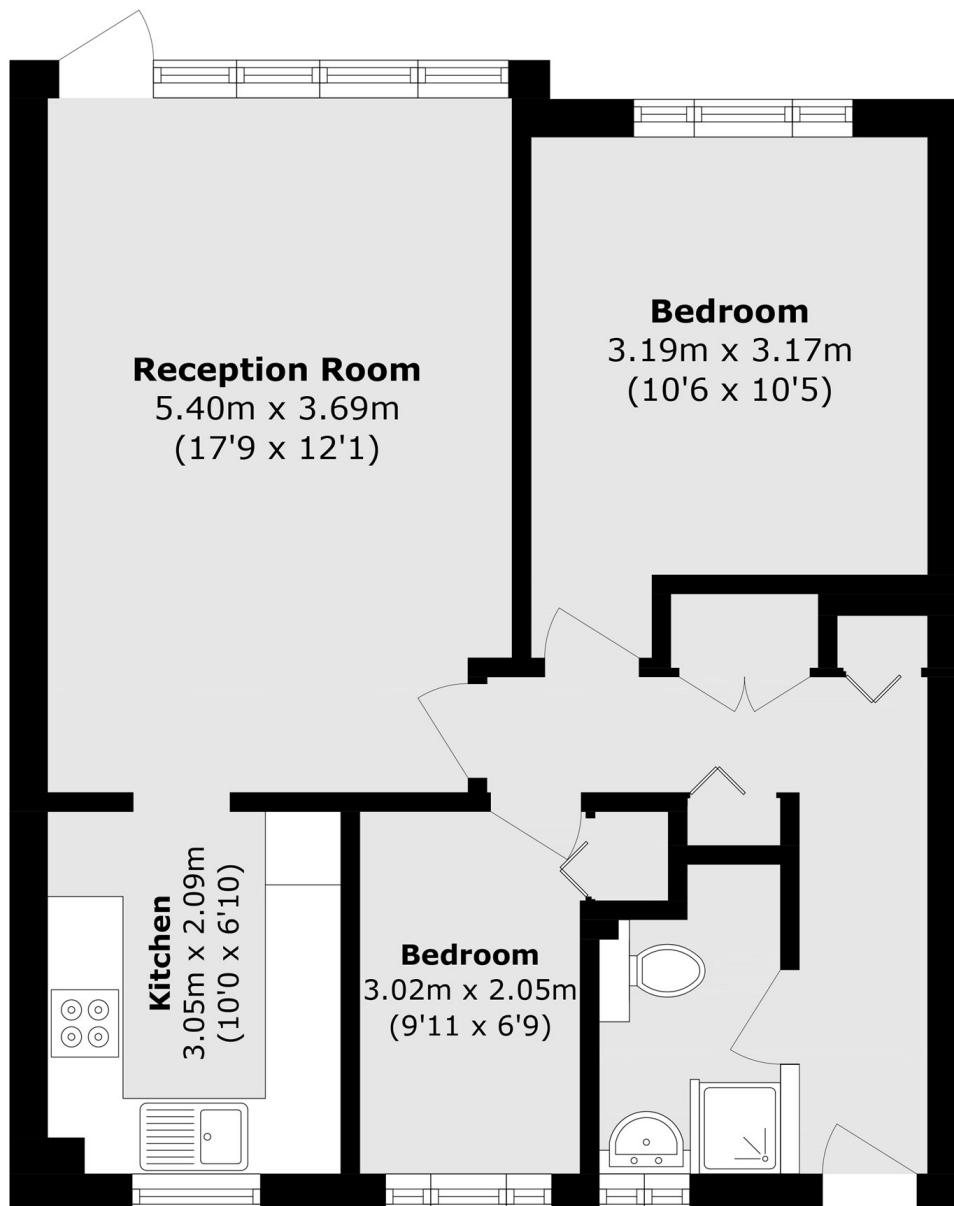
Spacious two bedroom purpose built apartment with direct access to a well maintained communal garden, the property is located within reach of Eltham high street and New Eltham main line train station. The property comprises of a large lounge/diner with direct access to a communal garden, fitted kitchen and modern bathroom including built -in storage cupboards to hallway and modern double glazing windows throughout

Ideally situated for access to Eltham High Street and Eltham & New Eltham Mainline train stations. Offered to the market with no forward chain. Council Tax Greenwich

### Features

- Large Lounge/Diner
- Direct Access To A Communal Garden
- Modern Bathroom
- Modern Double Glazing
- Ample Storage
- Offered Chain Free

Inca Drive,  
London, SE9



Total area (approx.): 58.7 sq. m (631.8 sq. ft)