



JOWEBSTER

13 Blore House
Coleridge Gardens, SW10



Property Attributes

- Reception Room
- Kitchen
- Master Bedroom with En-Suite
- Second Bedroom
- Underfloor Heating and Air Cooling
- Residents Gym and Swimming Pool
- Landscaped Communal Gardens
- Car Parking



Terms

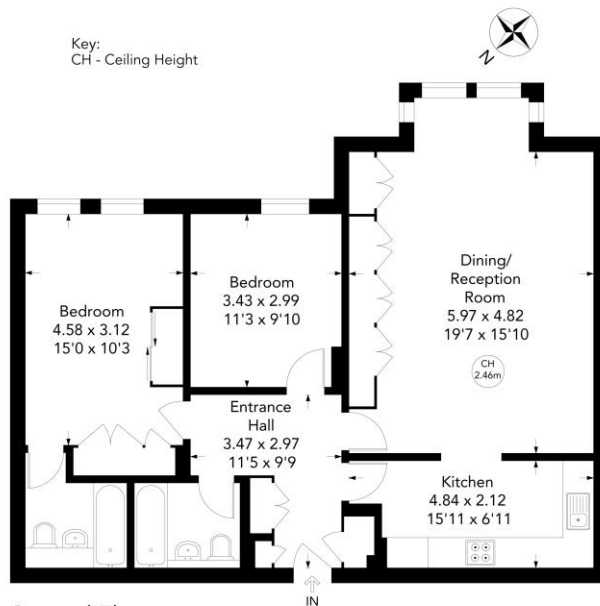
- Price: £1,350,000
- Borough: Royal Borough of Kensington And Chelsea
- Tenure: Leasehold approx. 975 years remaining
- Service Charge: £9,000 per annum
- Ground Rent: peppercorn
- Council Tax Band: Band H



BLORE HOUSE, COLERIDGE GARDENS, SW10

Approximate gross internal area = 939 sq ft / 87.24 sq m

Key:
CH - Ceiling Height



Second Floor

Not to scale, for guidance only and must not be relied upon as a statement of fact.
All measurements and areas are approximate only

+44 (0) 20 7349 7055
sales@jowebster.com

Misdescription Act

We wish to advise prospective purchasers that these sales particulars are believed to be correct, but their accuracy is in no way guaranteed, nor do they form any part of contract. We have not carried out a detailed survey nor tested the services, appliances or specific fittings. Measurements are approximate.