

44 Quay Central  
Liverpool  
L3 1DL



# 44 Quay Central

## £140,000

### Full Description

We're delighted to present Quay Central, a premium off-plan development positioned at the heart of Liverpool Waters' Central Docks - the city's emerging cultural and leisure hub. This high-specification new-build offers a rare opportunity to invest in one of the most exciting regeneration zones in the UK. Designed to reflect Liverpool's industrial heritage, the development features a striking warehouse-style exterior that blends seamlessly into the character of the surrounding area.

Each apartment is finished to an exceptional standard, with interiors that blend comfort and functionality. Homes feature deluxe carpeted bedrooms with integrated wardrobes, en-suite bathrooms in two-bedroom units, and high-quality porcelain tiles throughout bathroom areas. Living spaces are finished with premium vinyl plank flooring, and kitchens come fully fitted with integrated appliances including a dishwasher, fridge-freezer, oven, hob, and washer/dryer. Stone-style worktops, splashbacks, and overhead LED strip lighting add a sleek, modern finish.

### Investment Highlights:

Prime location within the £5.5 billion Liverpool Waters regeneration zone

Waterfront living with stunning views over the River Mersey

Just minutes from Liverpool's best restaurants, bars, and cultural hotspots

Below market value pricing

Projected rental yields of up to 7%

Excellent long-term capital growth potential

### Location Overview:

Quay Central is ideally situated on the northern edge of Liverpool's city centre, adjacent to the historic Waterloo Docks and forming a gateway to the new Central Docks neighbourhood. The wider area is undergoing major transformation as part of the Liverpool Waters masterplan, which will bring new homes, commercial space, and vibrant public realms to the waterfront.

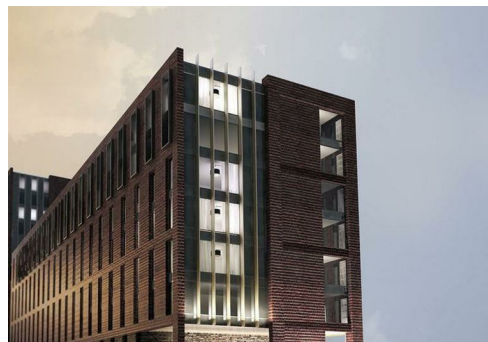
This is a unique opportunity to invest in a landmark scheme with strong growth prospects and excellent rental appeal.

### Local Authority

Liverpool City Council

### Council Tax Band C

### EPC Rating



### Contact

0161 470 1184

info@eliterealtyinvest.co.uk

