



## 6 High Leaze Road

Patchway, Bristol, BS34 5AF

£1,650 Per month



\*\* AVAILABLE APRIL \*\*

Welcome to this stunning house located on High Leaze Road in the desirable area of Patchway.

This modern Town House features a spacious reception room, stylish fully fitted kitchen with all white goods included and a cloak room (W/C) on the ground floor as well a low maintenance private garden at the back.

The first floor consists of three well-proportioned bedrooms, including a master suite with its own ensuite bathroom and a good size family bathroom

Situated in a good location, this property benefits from easy access to local amenities, schools, and transport links, making it an excellent choice for families and professionals.



Bedroom 1- Ensuite

Bedroom 2

Bedroom 3

Bathroom

Kitchen/Diner

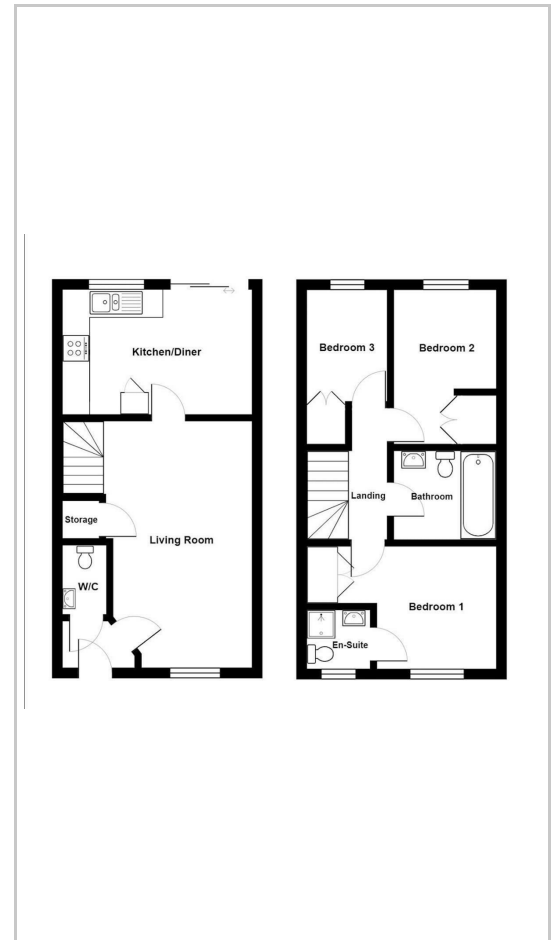
Living Room

WC

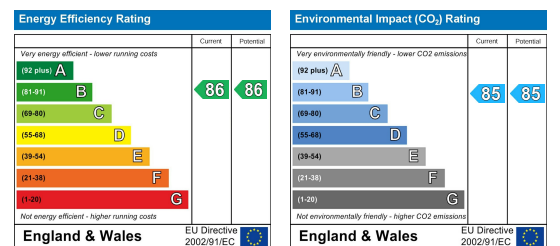
### Area Map



### Floor Plans



### Energy Efficiency Graph



These particulars, whilst believed to be accurate are set out as a general outline only for guidance and do not constitute any part of an offer or contract. Intending purchasers should not rely on them as statements of representation of fact, but must satisfy themselves by inspection or otherwise as to their accuracy. No person in this firm's employment has the authority to make or give any representation or warranty in respect of the property.

