

6 Boveney, £120,000*

(Other charges apply)

RICHMOND
VILLAGES

Part of Bupa



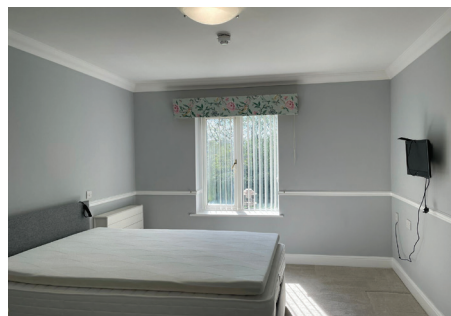
1



1



EPC - C



1 bedroom assisted living apartment

Situated on the ground floor, this well-presented, south-facing apartment has views over Bede's beautiful surrounding landscape. The accommodation comprises a living/dining room, galley kitchenette, and large double bedroom with en-suite shower facilities.

Specification

- Spacious living room with a feature fireplace and double doors leading onto a beautiful, south-facing patio area
- Kitchenette with a range of cupboards and fridge-freezer
- Double bedroom with built-in wardrobe
- Shower room with walk-in shower and fitted white suite.
- TV and satellite points*.
- Well stocked flower borders and lawns maintained by the Village Gardeners.
- Allocated parking space for one car.



*Satellite subscription not included.

Important Notice: These particulars are intended to give a fair and substantially correct overall description. **Other fees and charges apply**, please contact the Village Advisers for further details. Properties are sold on a 125 year lease and this property has 105 years remaining.

02476 645544
bedevillage@richmond-villages.com

Richmond Villages Bede,
Hospital Lane, Bedworth, Warwickshire CV12 0PB

6 Boveney

Ground Floor

Kitchen	2167mm x 2011mm 7'11" x 6'6"
Sitting Room	3657mm x 3505mm 12' x 11'5"
Bedroom	3657mm x 3505mm 12' x 11'5"
Shower Room	2167mm x 2011mm 7'11" x 6'6"



These particulars are intended to give a fair and substantially correct overall description. Measurements have been taken at 1500mm skirting height. All dimensions are approximate. Bedroom measurements include the wardrobe if applicable. Room measurements include bay windows if applicable. Furniture layout is to give an indicative impression. Although all efforts have been made to ensure its accuracy at time of print dimensions, fixtures, fittings, finishes and specifications are subject to change without notice. The properties are sold unfurnished.

