



Forge Cottage, Forge Lane, Sutton

Guide price £485,000 to £500,000

DOMINIC MURPHY POWERED BY exp TM UK

@ dominic.murphy@exp.uk.com

🌐 dominicmurphy.exp.uk.com

📞 01304 746 016

Forge Cottage, Forge Lane, Sutton

Nestled along a quiet country lane in the charming village of Sutton, Forge Cottage is a truly unique and characterful detached home with rich historical roots. Dating back to the 16th century in parts, this enchanting former village forge has been lovingly preserved and thoughtfully extended, blending centuries-old charm with modern comfort.

Steeped in history, the cottage retains a wealth of original features that tell the story of its past, from exposed beams and rustic fireplaces to the solid, time-worn walls that have stood for generations. In 2008, a sympathetic two-storey extension was added, designed to seamlessly complement the original architecture while enhancing the living space.

Inside - the property offers flexible and spacious accommodation, including two reception rooms perfect for relaxing or entertaining, a charming farmhouse-style kitchen/breakfast room, and a convenient downstairs WC/shower room. Upstairs, you'll find three well-proportioned bedrooms and a family bathroom, all with lovely views over the gardens and surrounding countryside.

Outside - Set within a generous and delightfully landscaped plot, the grounds of Forge Cottage are a nature lover's dream. Meandering secret walkways, colourful flower beds, and mature plantings offer a tranquil escape and a sense of discovery around every corner. There's also an outhouse with excellent potential for conversion, subject to the necessary consents.

Ample off-road parking ensures practicality, and although you'll feel a world away in this rural retreat, local amenities and the nearby towns of Dover, Deal, and Sandwich are just a short drive away. Early viewing is highly recommended.

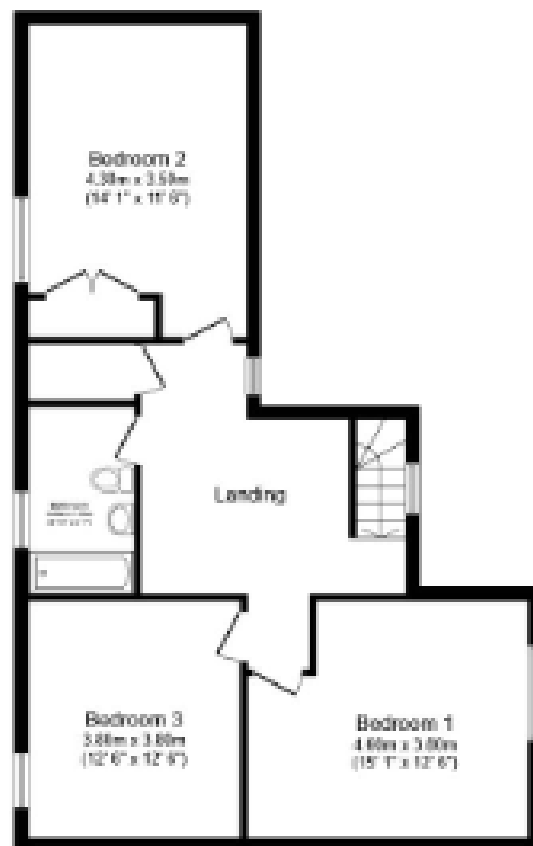












First Floor



Second Floor

Total floor area 163.3 m² (1,758 sq.ft.) approx

eXp World UK Ltd is a registered company at Level 37, 25 Canada Square, London, E14 5LQ.

Registered company number is 12016573. VAT Registration Number is 327 4120 29