



**Elmwood Court Pershore Road, Birmingham B5 7PE**

**welcome to**

## **Elmwood Court Pershore Road, Birmingham**

\*\*\*\* ONE - BEDROOM FLAT \*\*\* EXTENDED LEASE\*\*\* VIEWS OVER COMMUNAL GARDENS \*\*\* GARAGE-EN-BLOC \*\*\* SECURE ENTRANCE AND LIFT ACCESS \*\*\* RESIDENTS PARKING \*\*\* PERFECT FOR A FIRST TIME BUY OR INVESTMENT \*\*\*\*

### **Agent Note**

This property is council tax band A.

### **Entrance Hall**

Electric heater, built in cupboards.

### **Lounge**

16' x 12' ( 4.88m x 3.66m )

Double glazed window to front & side, 2-night storage heaters.

### **Kitchen**

9' x 6' ( 2.74m x 1.83m )

Double glazed window to side, galley kitchen, range of wall & base units with worktops over, stainless steel sink & drainer, tiled to splash-prone areas, plumbing for utilities, gas hob & cooker, built in pantry.

### **Bedroom**

11' x 11' into wardrobe. ( 3.35m x 3.35m into wardrobe. )

Double glazed window to front, built in wardrobes.

### **Bathroom**

Bath with electric shower over, wash hand basin with hot & cold taps, low level flush w/c.

### **Garden**

Private balcony.

### **Parking**

Residents parking & garage-en-bloc (closest one to front door, larger than the others).





***view this property online*** [shipways.co.uk/Property/HBN111284](http://shipways.co.uk/Property/HBN111284)



welcome to

## Elmwood Court Pershore Road, Birmingham

- ONE - BEDROOM FLAT.
- FANTASTIC LOCATION.
- GARAGE-EN-BLOC.
- RESIDENTS PARKING.
- VIEWS OVER COMMUNAL GROUNDS.

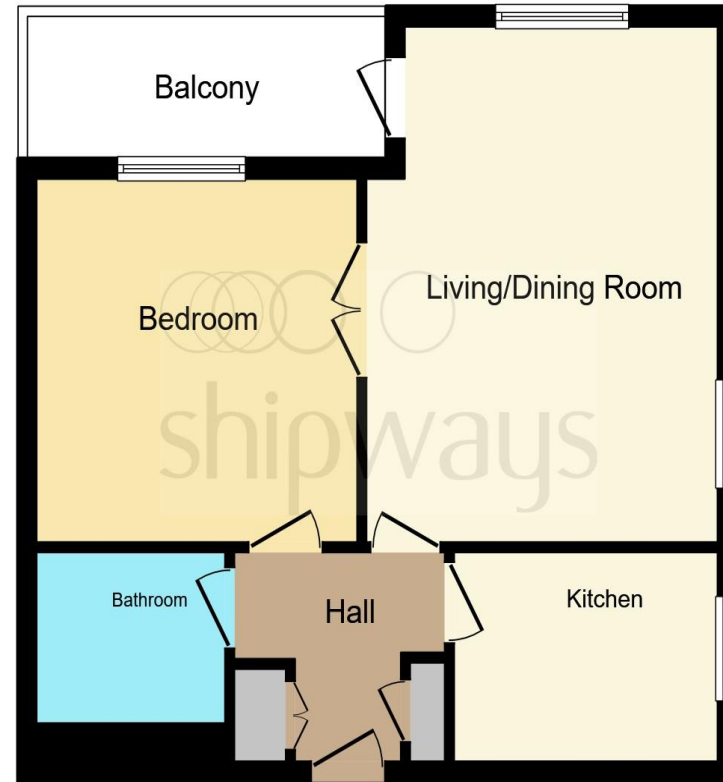
Tenure: Leasehold EPC Rating: D

Council Tax Band: A Service Charge: 3200.00

Ground Rent: Ask Agent

This is a Leasehold property. We are awaiting further details about the Term of the lease. For further information please contact the branch. Please note additional fees could be incurred for items such as Leasehold packs.

offers over **£100,000**



This floor plan is for illustrative purposes only. It is not drawn to scale. Any measurements, floor areas (including any total floor area), openings and orientation are approximate. No details are guaranteed, they cannot be relied upon for any purpose and they do not form part of any agreement. No liability is taken for any error, omission or misstatement. A party must rely upon its own inspection(s). Powered by [www.focalagent.com](http://www.focalagent.com)

view this property online [shipways.co.uk/Property/HBN111284](http://shipways.co.uk/Property/HBN111284)



Property Ref:  
HBN111284 - 0006

1. MONEY LAUNDERING REGULATIONS Intending purchasers will be asked to produce identification documentation at a later stage and we would ask for your co-operation in order that there is no delay in agreeing the sale. 2. These particulars do not constitute part or all of an offer or contract. 3. The measurements indicated are supplied for guidance only and as such must be considered incorrect. Potential buyers are advised to recheck measurements before committing to any expense. 4. We have not tested any apparatus, equipment, fixtures or services and it is in the buyers interest to check the working condition of any appliances. 5. Where an EPC, or a Home Report (Scotland only) is held for this property, it is available for inspection at the branch by appointment. If you require a printed version of a Home Report, you will need to pay a reasonable production charge reflecting printing and other costs. 6. We are not able to offer an opinion either written or verbal on the content of these reports and this must be obtained from your legal representative. 7. Whilst we take care in preparing these reports, a buyer should ensure that his/her legal representative confirms as soon as possible all matters relating to title including the extent and boundaries of the property and other important matters before exchange of contracts.

Shipways is a trading name of Sequence (UK) Limited which is registered in England and Wales under company number 4268443, Registered Office is Cumbria House, 16-20 Hockliffe Street, Leighton Buzzard, Bedfordshire, LU7 1GN. VAT Registration Number is 500 2481 05.



**0121 427 3264**



[harborne@shipways.co.uk](mailto:harborne@shipways.co.uk)



172 High Street, Harborne, BIRMINGHAM,  
West Midlands, B17 9PP



[shipways.co.uk](http://shipways.co.uk)