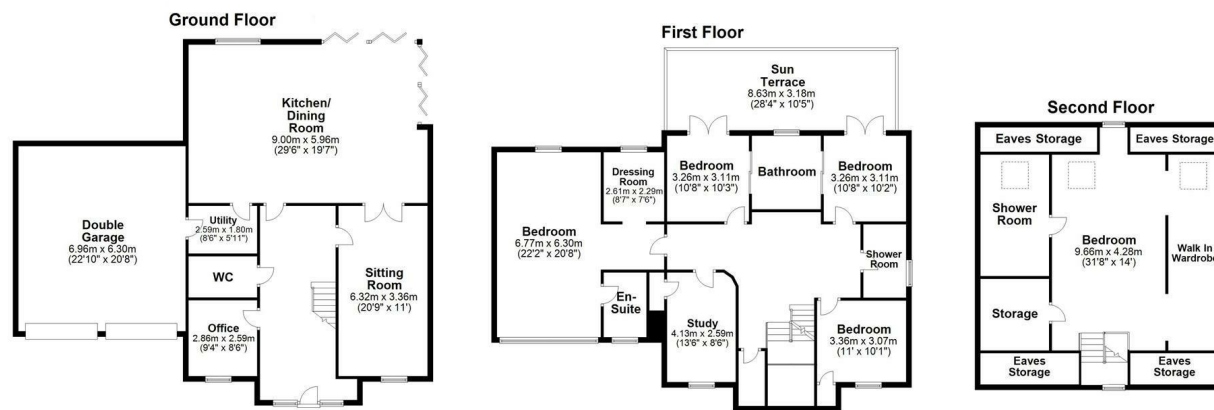




Plot on Roade Hill, Ashton, Northampton, NN7 2JH



House area: approx. 332.0 sq. metres (3573.6 sq. feet)
 Garage area: approx. 43.8 sq. metres (471.5 sq. feet)
 Not to scale. For illustrative purposes only

£925,000 Freehold

Offered to the market is a rare opportunity to purchase an exceptional five-bedroom detached family home by the highly regarded developer Inspire Design and Build, located in the sought-after South Northamptonshire village of Ashton.

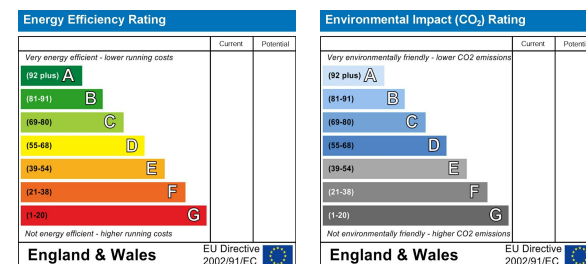
The property forms part of an exclusive development of three homes on a parcel of land on the edge of the village. A unique feature of this opportunity is the ability for the purchaser to be involved in the design process, allowing you to personalise and help shape this impressive home to suit your lifestyle. The property will be delivered as a fully finished home, ready for the new owners to move into.

The thoughtfully designed accommodation will extend to approximately 3,200 sq ft and is arranged over three floors. The ground floor will feature a welcoming entrance hall leading to a spacious open-plan kitchen and dining area, a separate living room, a home office, WC, and a utility room. To the first floor are four well-proportioned bedrooms and a study, including a generous principal bedroom with en-suite, together with a family bathroom and additional shower room. The second floor provides a further bedroom and shower room, offering flexible space ideal for guests or older children. To the rear, the property will enjoy open views across the surrounding countryside, along with a private west-facing rear garden. To the front, there will be off-road parking and access to a double garage.

This is a rare opportunity to secure a bespoke, high-quality home in one of South Northamptonshire's most desirable village locations.

Full plans with design statements can be found on the West Northamptonshire planning portal under the reference of WNS/2022/0926/FUL.

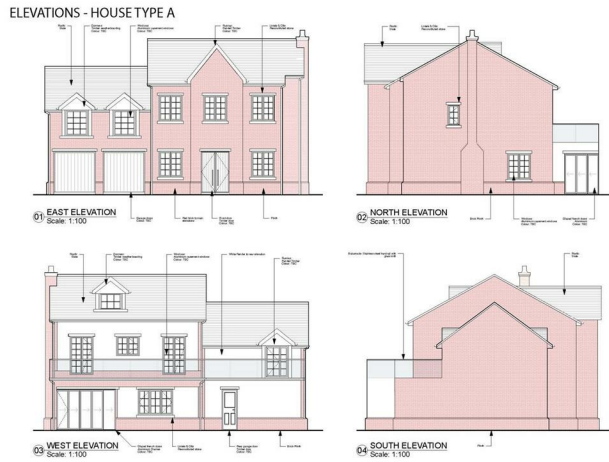
You may download, store and use the material for your own personal use and research. You may not republish, retransmit, redistribute or otherwise make the material available to any party or make the same available on any website, online service or bulletin board of your own or of any other party or make the same available in hard copy or in any other media without the website owner's express prior written consent. The website owner's copyright must remain on all reproductions of material taken from this website.



Plot on Road Hill, Ashton, Northampton, NN7 2JH

PLANNING

Full plans with design statements can be found on the West Northamptonshire planning portal under the reference of WNS/2022/0926/FUL.



AGENTS NOTE:

- Warranty Scheme: Global Home Warranties
- Payment Stages: 6 Payments, deposit (5%), foundations complete (10%), shell up to roof plate (25%), roof & first fix completed (25%), second fix (25%), completion (10%)
- Plot 3 hasn't started, Plot 2 is half way through, if not more
- Plan of plot borders is in document folder

ACCOMMODATION



GROUND FLOOR

ENRANCE HALL

SITTING ROOM

20'09 x 11'00



KITCHEN/DINER

29'06 x 19'07



UTILITY

8'06 x 5'11



OFFICE

9'04 x 8'06



FIRST FLOOR

LANDING

BEDROOM ONE

22'02 x 20'08

ENSUITE

DRESSING ROOM

8'07 x 7'06

BEDROOM TWO

11'00 x 10'07

SHOWERROOM

BEDROOM THREE

10'07 x 10'03

BEDROOM FOUR

10'08 x 10'02

BATHROOM

STUDY

13'06 x 8'06

SECOND FLOOR

BEDROOM FIVE

31'08 x 14'00



SHOWERROOM

OUTSIDE

There is off-road parking to the front with vehicular access to:-

DOUBLE GARAGE

22'02 x 20'08

ELEVATION - SITE CONTEXT



WINESTONE ARCHITECT
HART HILLTOP
DEAN HART HART HILLTOP, ASHTON

PAGE 26

REAR GARDEN

Benefitting from views over open fields, the property will enjoy a sunny west-facing garden.

For further information on viewing call 01604 230222