



MERRYWEATHER PLACE, SE10

£1,900 per week (per month)

Modern
One Bedroom
Top Floor
Private Balcony
Open-plan Kitchen

@marshandparsons
marshandparsons.co.uk

MARSH &
PARSONS



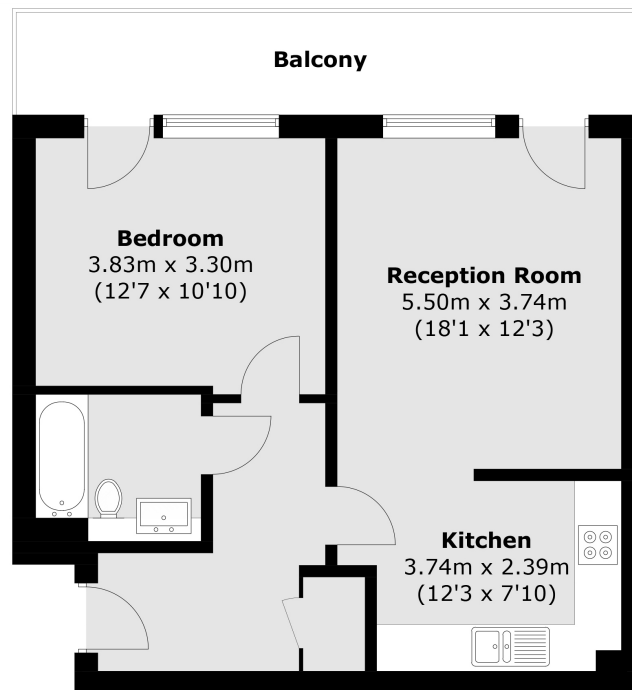
ABOUT THE PROPERTY

A modern one bedroom apartment in a gated development, ideally located in the desirable West Greenwich.

Conveniently situated just moments from Greenwich's mainline and DLR stations, this property is within walking distance to the vibrant Greenwich town centre and the historic Royal Park, making it perfect for those seeking both modern living and easy access to transport, shops and green spaces.



STEP INSIDE MERRYWEATHER PLACE



Total area (approx.): 50.8 sq. m (546.8 sq. ft)
Balcony area : 10.6 sq. m (114.0 sq. ft)

Greenwich
020 8815 2230

Energy Rating: C We aim to make our particulars both accurate and reliable. However, they are not guaranteed; nor do they form part of an offer or contract. If you require clarification on any points then please contact us, especially if you're traveling some distance to view. Please note that appliances and heating systems have not been tested and therefore no warranties can be given as to their good working order

**MARSH &
PARSONS**