



Roman Road, Corby

**STUART
CHARLES**
ESTATE AGENTS

£280,000

Situated in the popular Little Stanion development, this beautifully presented four-bedroom townhouse offers spacious and versatile accommodation ideal for modern family living. Conveniently located within walking distance of local schools, shops, and excellent transport links, this move-in-ready home combines comfort, style, and practicality.

The ground floor comprises a welcoming entrance hall, a contemporary kitchen/dining room with ample storage and space for entertaining, a convenient cloakroom/WC, and a generously sized living room with double doors opening onto the enclosed rear garden.

To the first floor are two well-proportioned double bedrooms, a versatile single bedroom ideal as a nursery, study, or guest room, and a modern family bathroom.

Occupying the entire top floor, the impressive master suite provides a peaceful retreat, complete with fitted wardrobes and a stylish en-suite shower room.

Externally, the property benefits from a low-maintenance rear garden, garage, and allocated parking located beneath a nearby coach house.

Little Stanion is a highly regarded development offering a village-style atmosphere with attractive communal areas, making it a fantastic location

- Beautifully Presented & Move-In Ready
- Modern Kitchen/Dining Room
- Single Garage & Parking
- Master Bedroom with En-Suite
- Spacious lounge with patio doors to garden.
- Sought-After Location
- Contemporary Family Bathroom
- Low-Maintenance Enclosed Garden
- Four Well-Proportioned Bedrooms
- Close to all local amenities to include schooling.

Entrance Hall

Light and airy Entrance hall with doors through to kitchen/Diner and lounge and staircase to first floor.

Guest Cloakroom

Low level cistern and hand wash basin with double glazed window to front elevation.

Kitchen/Diner

9'1" x 15'8" (2.79m x 4.78m)
Contemporary kitchen/dining space with both eye level and low level base units and double glazed window to front elevation.

First floor landing

Bedroom Four/Home office.

6'7" x 8'5" (2.01m x 2.59m)
Currently used as a study with double glazed window to rear elevation.







Bedroom Three

9'1" x 12'2" (2.79m x 3.71m)

Currently used as a walk in wardrobe/dressing room with double glazed window to the front elevation.

Bedroom two.

9'1" x 13'8" (2.79m x 4.19m)

Double bedroom with double glazed window to the front elevation.

Family bathroom

6'5" x 6'2" (1.98m x 1.88m)

Three piece suite to include bath, low level cistern and hand wash basin.





Principal suite

10'4" x 18'9" (3.15m x 5.74m)

A wonderfully spacious top floor suite to include built in wardrobes with windows to dual elevations. Door to spacious en-suite completes the floor.

En suite

4'9" x 9'6" (1.47m x 2.90m)

Light and airy ensuite shower room to include separate shower cubicle, wash hand basin and low level cistern.

Outside.

Front; Low maintenance garden with access to front door.



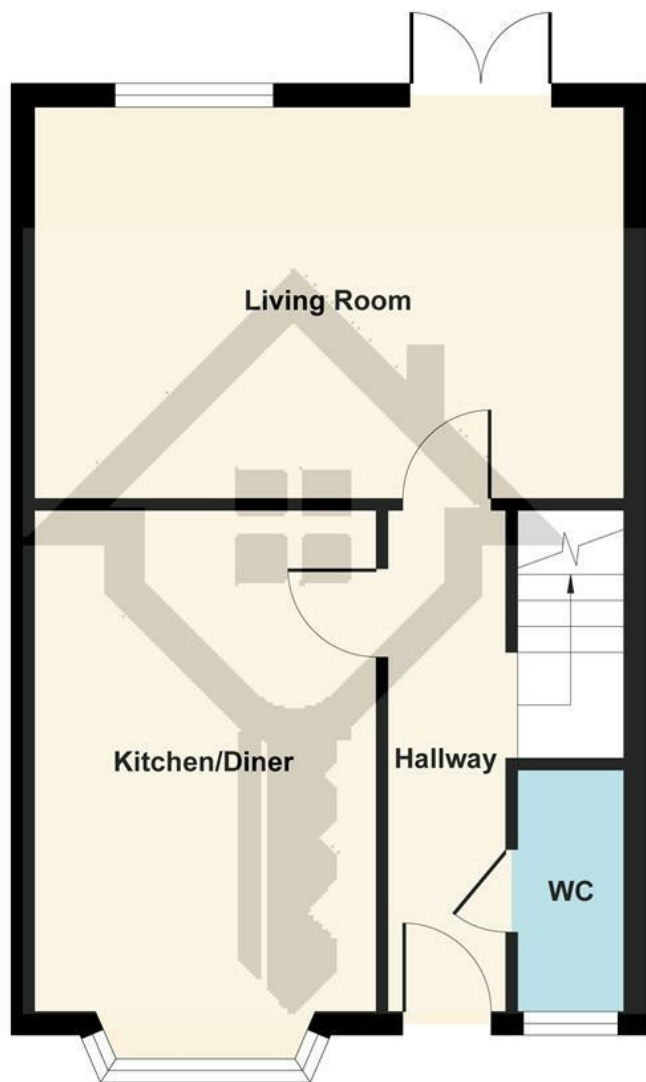


Rear; Low maintenance garden with artificial turf, patio area and gate through to single garage.

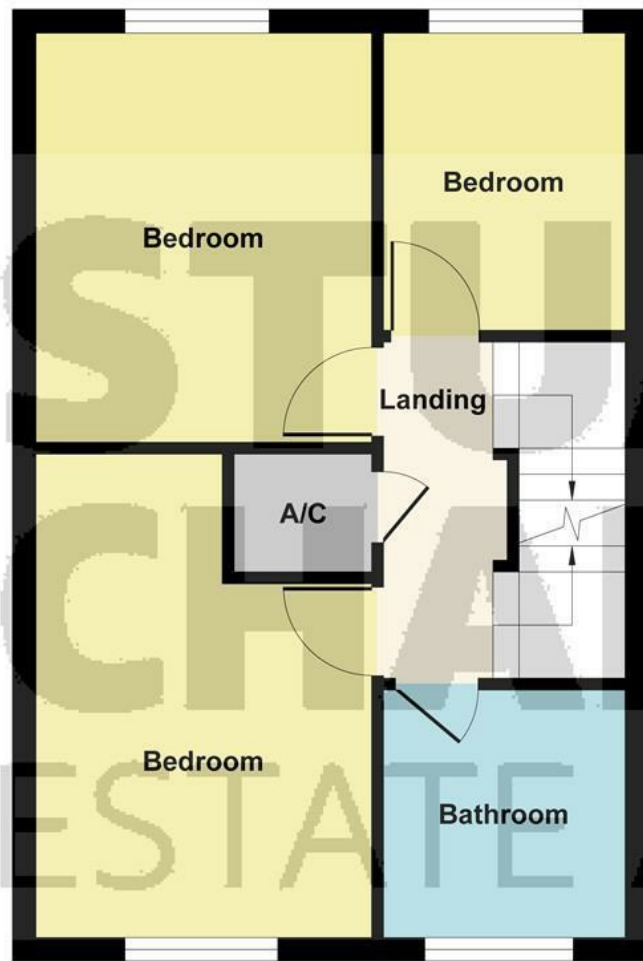
Single garage and parking in front of accessed through rear gate.



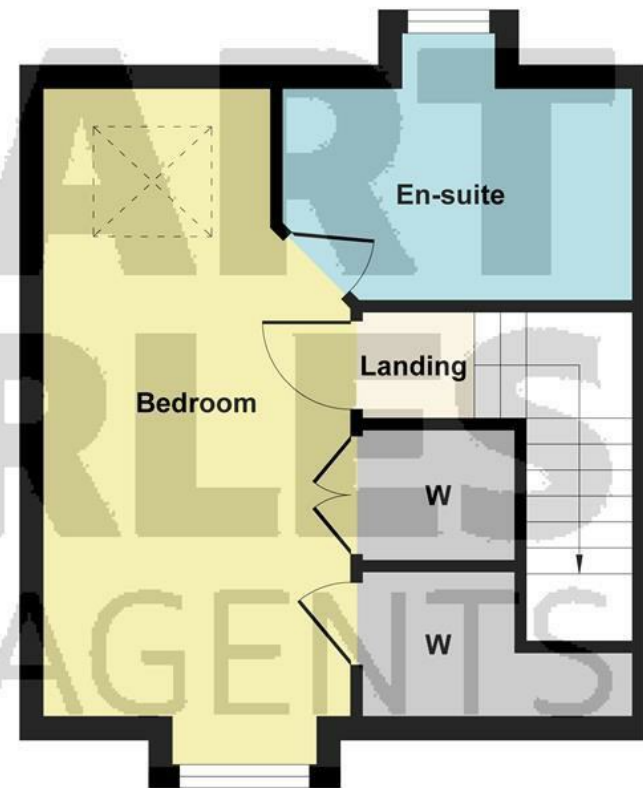




Ground Floor



First Floor



Second Floor

Illustration for identification purposes only, measurements are approximate, not to scale.

Produced by Elements Property

