



Douglas Walk, Broughton, Milton Keynes, MK10 7DF

welcome to

Douglas Walk, Broughton, Milton Keynes

Located on the popular Douglas Walk in the sought-after area of Broughton, this well-presented, two-bedroom coach house offers stylish and low-maintenance living, ideal for first-time buyers, investors, or professionals.

Entrance Hall

Double-glazed door to the front and stairs to the first floor.

Landing

Stairs down to the front door, 2 storage cupboards, loft access and double-glazed window to the rear. Door to the kitchen, both bedrooms and the family bathroom.

Lounge / Diner

Radiator and 2 double-glazed windows to the front. Arch into the kitchen.

Kitchen

Fitted with a mix of wall and base units with work surface over, stainless steel sink with mixer tap and drainer, electric oven and gas hob with extractor fan over. Space for a dishwasher, washing machine and fridge/freezer. Radiator and double-glazed window to the rear.

Bedroom One

Radiator and double-glazed window to the rear.

Bedroom Two

Built-in storage, radiator and double-glazed window to the front.

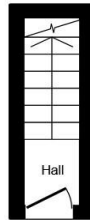
Bathroom

Partially tiled with a pedestal wash hand basin with mixer tap, low-level WC and shower cubicle with a shower head and rainfall shower head over. Heated towel rail and extractor fan. Double-glazed obscured window to the rear.

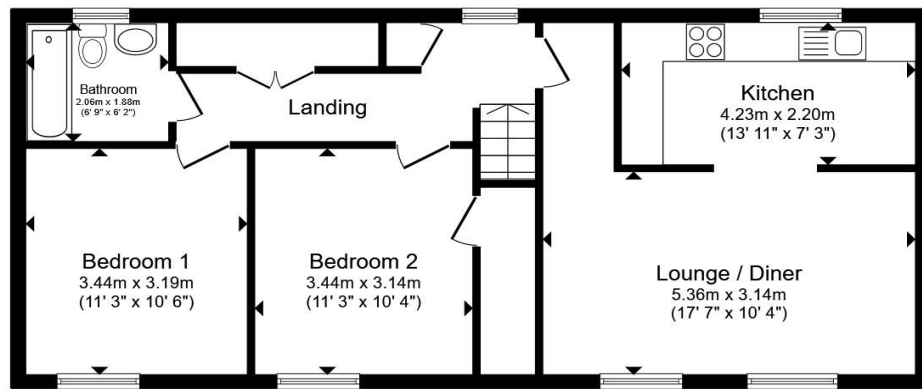
Outside

Parking

There is a carport to the rear of property with additional parking in front.



Ground Floor



First Floor

Total floor area 71.9 m² (774 sq.ft.) approx

This floor plan is for illustrative purposes only. It is not drawn to scale. Any measurements, floor areas (including any total floor area), openings and orientation are approximate. No details are guaranteed, they cannot be relied upon for any purpose and they do not form part of any agreement. No liability is taken for any error, omission or misstatement. A party must rely upon its own inspection(s). Powered by www.propertybox.io



welcome to
Douglas Walk,
Broughton, Milton Keynes

- TWO-BEDROOM COACH HOUSE
- SOUGHT AFTER LOCATION
- OPEN-PLAN LIVING/DINING AREA
- NEW BOILER
- CARPORT

Tenure: Leasehold EPC Rating: C
Council Tax Band: B Service Charge: 436.00
Ground Rent: 250.00

This is a Leasehold property with details as follows; Term of Lease 125 years from 01 Nov 2007.
Should you require further information please contact the branch. Please Note additional fees
could be incurred for items such as Leasehold packs.

fixed price

£240,000



view this property online [brownandmerry.co.uk/Property/NPL107974](https://www.brownandmerry.co.uk/Property/NPL107974)



Property Ref:
NPL107974 - 0003

1. MONEY LAUNDERING REGULATIONS Intending purchasers will be asked to produce identification documentation at a later stage and we would ask for your co-operation in order that there is no delay in agreeing the sale. 2. These particulars do not constitute part or all of an offer or contract. 3. The measurements indicated are supplied for guidance only and as such must be considered incorrect. Potential buyers are advised to recheck measurements before committing to any expense. 4. We have not tested any apparatus, equipment, fixtures or services and it is in the buyers interest to check the working condition of any appliances. 5. Where an EPC, or a Home Report (Scotland only) is held for this property, it is available for inspection at the branch by appointment. If you require a printed version of a Home Report, you will need to pay a reasonable production charge reflecting printing and other costs. 6. We are not able to offer an opinion either written or verbal on the content of these reports and this must be obtained from your legal representative. 7. Whilst we take care in preparing these reports, a buyer should ensure that his/her legal representative confirms as soon as possible all matters relating to title including the extent and boundaries of the property and other important matters before exchange of contracts.

Brown & Merry is a trading name of Sequence (UK) Limited which is registered in England and Wales under company number 4268443, Registered Office is Cumbria House, 16-20 Hockliffe Street, Leighton Buzzard, Bedfordshire, LU7 1GN. VAT Registration Number is 500 2481 05.

brown & merry



01908 611242



newportpagnell@brownandmerry.co.uk



74A High Street, Newport Pagnell, MILTON
KEYNES, Buckinghamshire, MK16 8AQ



[brownandmerry.co.uk](https://www.brownandmerry.co.uk)