



## Station Road, N11

£400,000

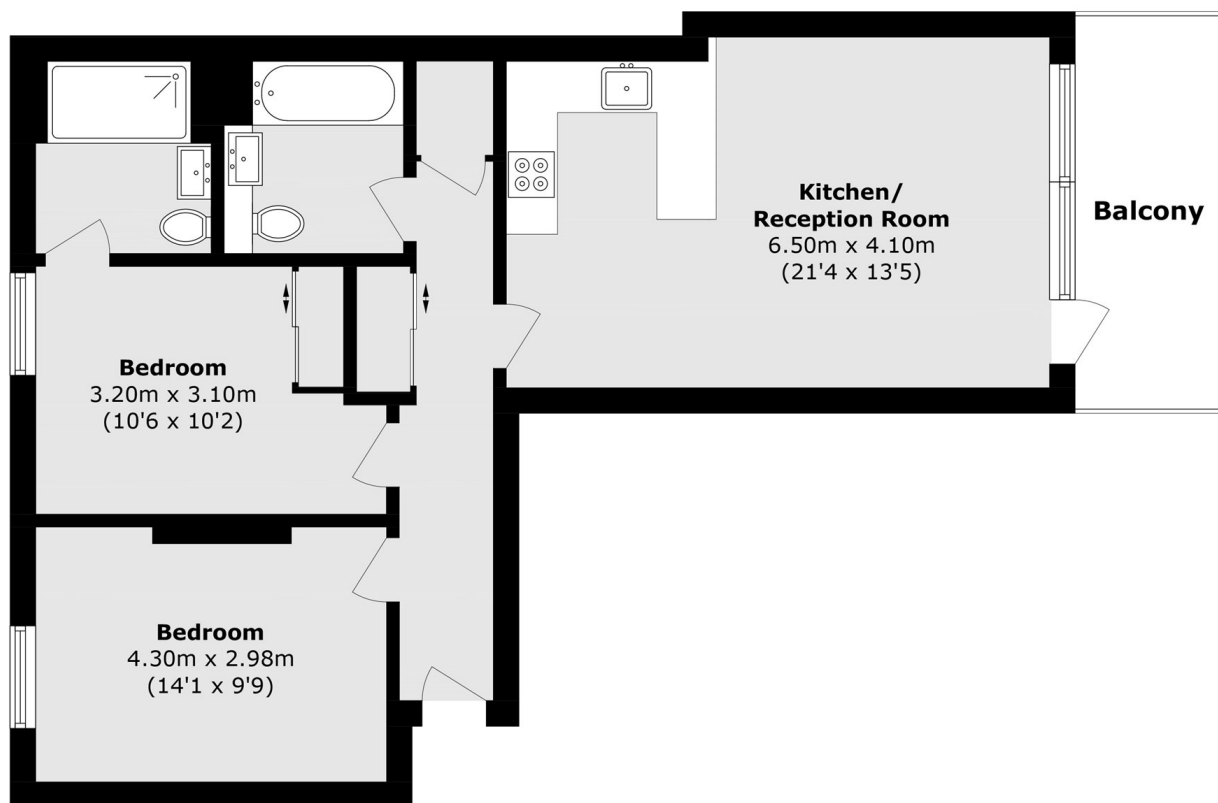
Situated on the fifth floor with fantastic views in a lift assisted block, is this apartment in immaculate condition benefitting from two double bedrooms and two bathrooms. The flat also contains double glazing throughout, great natural light and an open plan reception/kitchen which leads onto a private balcony.

Benefiting being positioned close to New Southgate railway station and Arnos Grove station (Piccadilly line). It is also within walking distance to Arnos Park and the local schools. There is easy access to plenty of shops and amenities close by.

### Features

- Lift Assisted Block
- Two Bedrooms
- Double Glazing
- Private Balcony
- Fifth Floor
- Transport Links

# Station Road, London, N11



Total area (approx.): 70.0 sq. m (753.4 sq. ft)  
Balcony area (approx.): 7.3 sq. m (78.5 sq. ft)