



## Chatsworth Road, NW2

£553 Per week

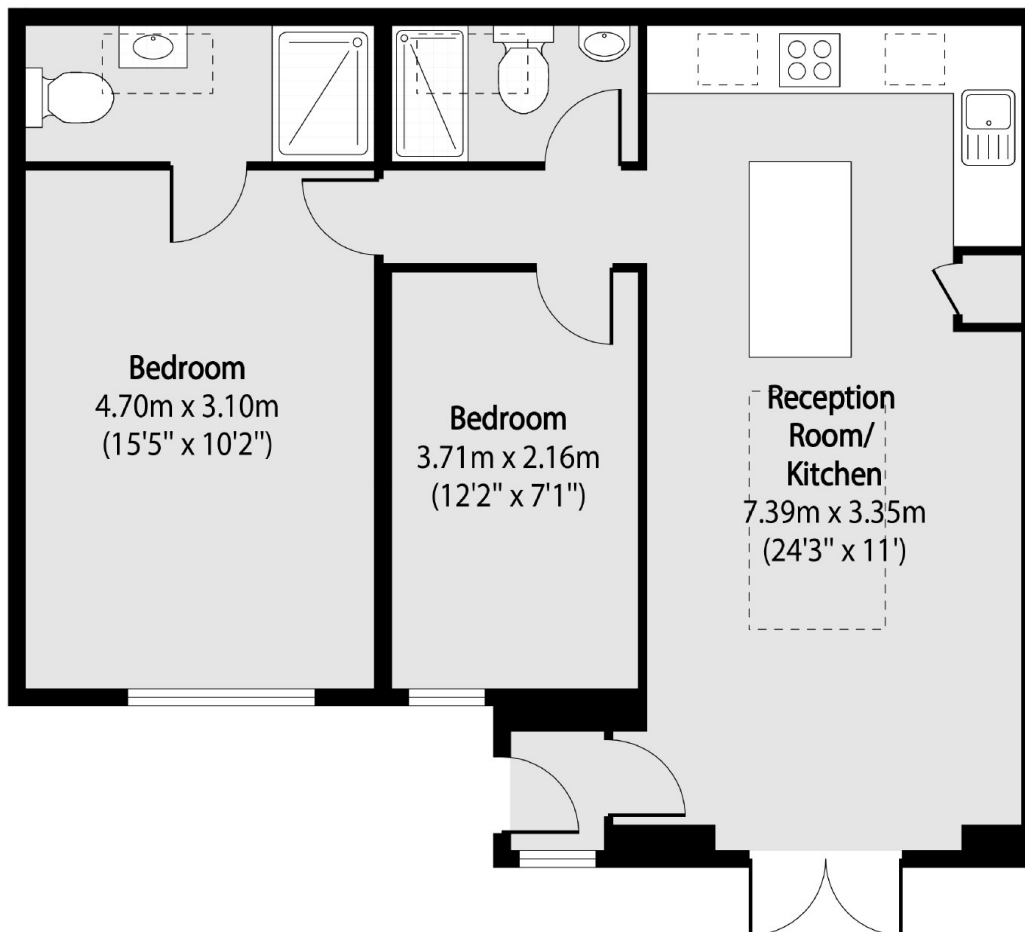
This two bedroom two bathroom Bungalow is ideally situated in the heart of the Mapesbury. The property has a spacious open-plan living area with a modern integrated kitchen, a primary bedroom with en-suite shower, a further bedroom and a separate shower room. You also have a beautifully turfed garden ideal for entertaining.

Chatsworth Road is well situated for Willesden Green and Kilburn high streets which have many boutique cafés, restaurants and local amenities. Willesden Green, Kilburn stations (Jubilee Line) and Brondesbury (Overground) are also on your doorstep.

### Features

- Two Bedrooms
- Two Bathrooms
- Open-Plan
- Integrated Kitchen
- Private Garden
- The Mapesbury

# Chatsworth Road, London, NW2



Total area (approx): 59.46 sq m (640 sq. ft)