



Edith Row, SW6

£992 Per week

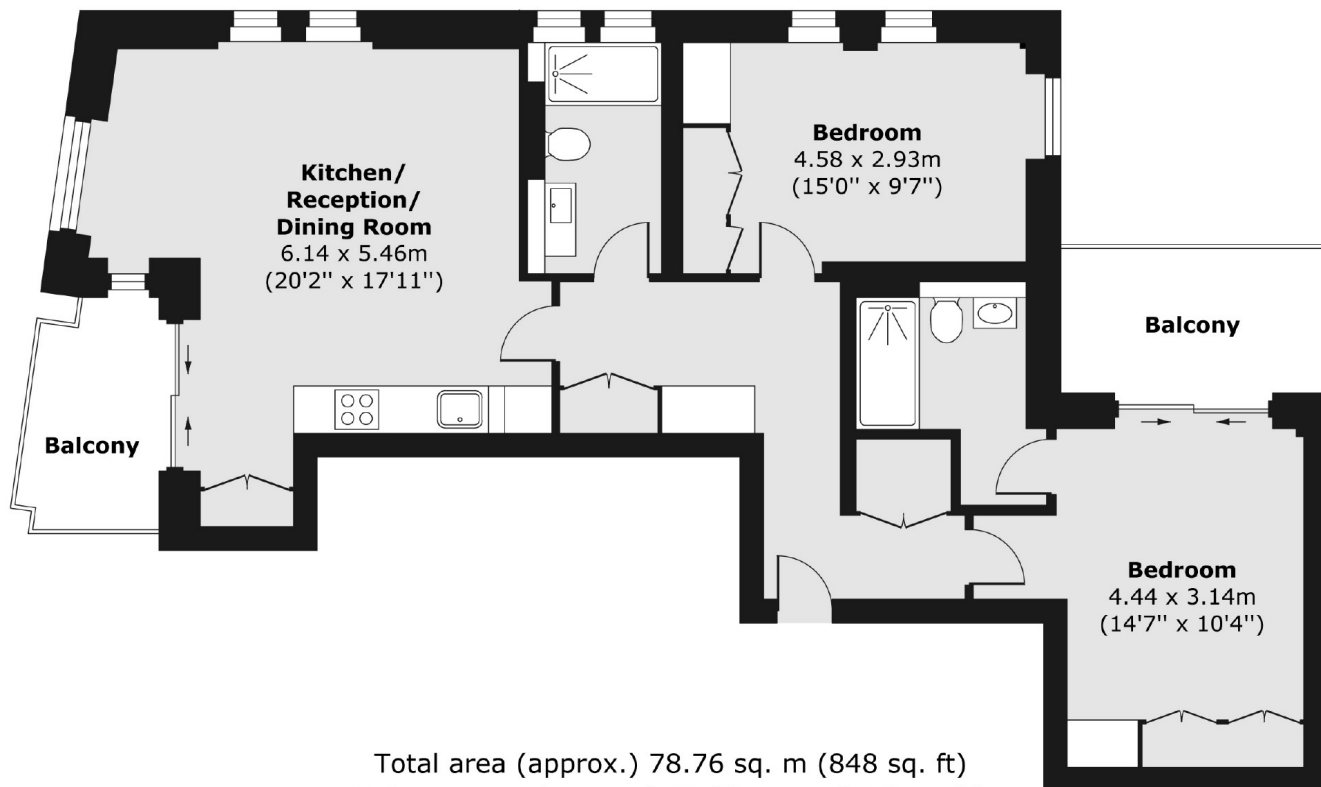
A stunning and immaculately presented two bedroom apartment off the Kings Road. Boasting modern fixtures and fittings throughout the property offers a large open plan kitchen/reception room, two double bedrooms, two bathrooms and private outside space.

Edith Row is perfectly located off the popular Kings Road with the transport links of Fulham Broadway close by.

Features

- Private Balcony
- Parquet Flooring
- Concierge Service
- Two Bathrooms
- Two Bedrooms
- Kings Road

Edith Row, London, SW6



Total area (approx.) 78.76 sq. m (848 sq. ft)
Balcony area (approx.) 10.83 sq. m (117 sq. ft)