



Avenue Road, Clarendon Park

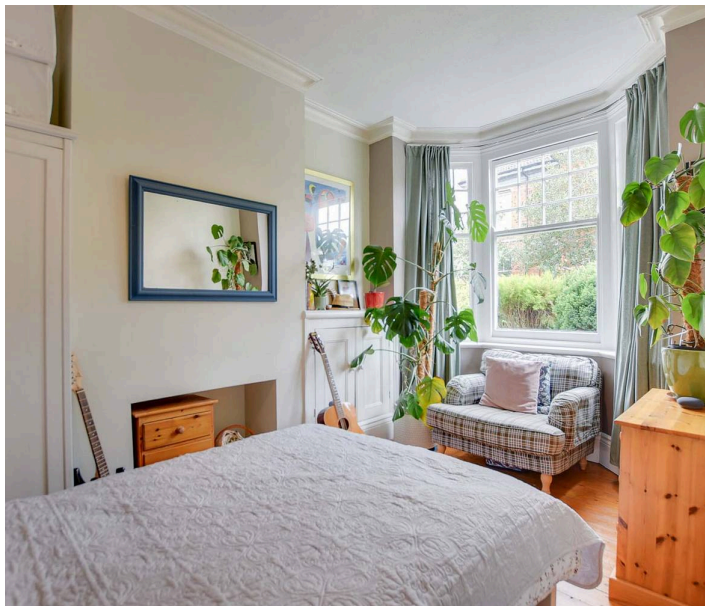
Offers in the Region of £315,000

Attractive period terrace in Clarendon Park CUL-DE-SAC with planning permission granted to convert from two flats to a three-bed home. Character features with a modern feel.



0116 274 5544





Ground Floor Flat

Entrance Hall

With wooden flooring and an understairs cupboard.

Reception Room/Bedroom

13' 5" x 8' 10" (4.09m x 2.69m)

With a bay window to the front elevation, coving to the ceiling, ceiling rose, meter cupboard, wooden flooring and a radiator.

Living Room

11' 0" x 9' 5" (3.35m x 2.87m)

With a window to the rear elevation, TV point, wooden flooring and a radiator.

Kitchen

11' 1" x 7' 5" (3.38m x 2.26m)

With a door and window to the side elevation, a sink and drainer unit with a range of wall and base units with work surfaces over, oven, gas hob, stainless steel chimney hood, laminate flooring and a radiator.

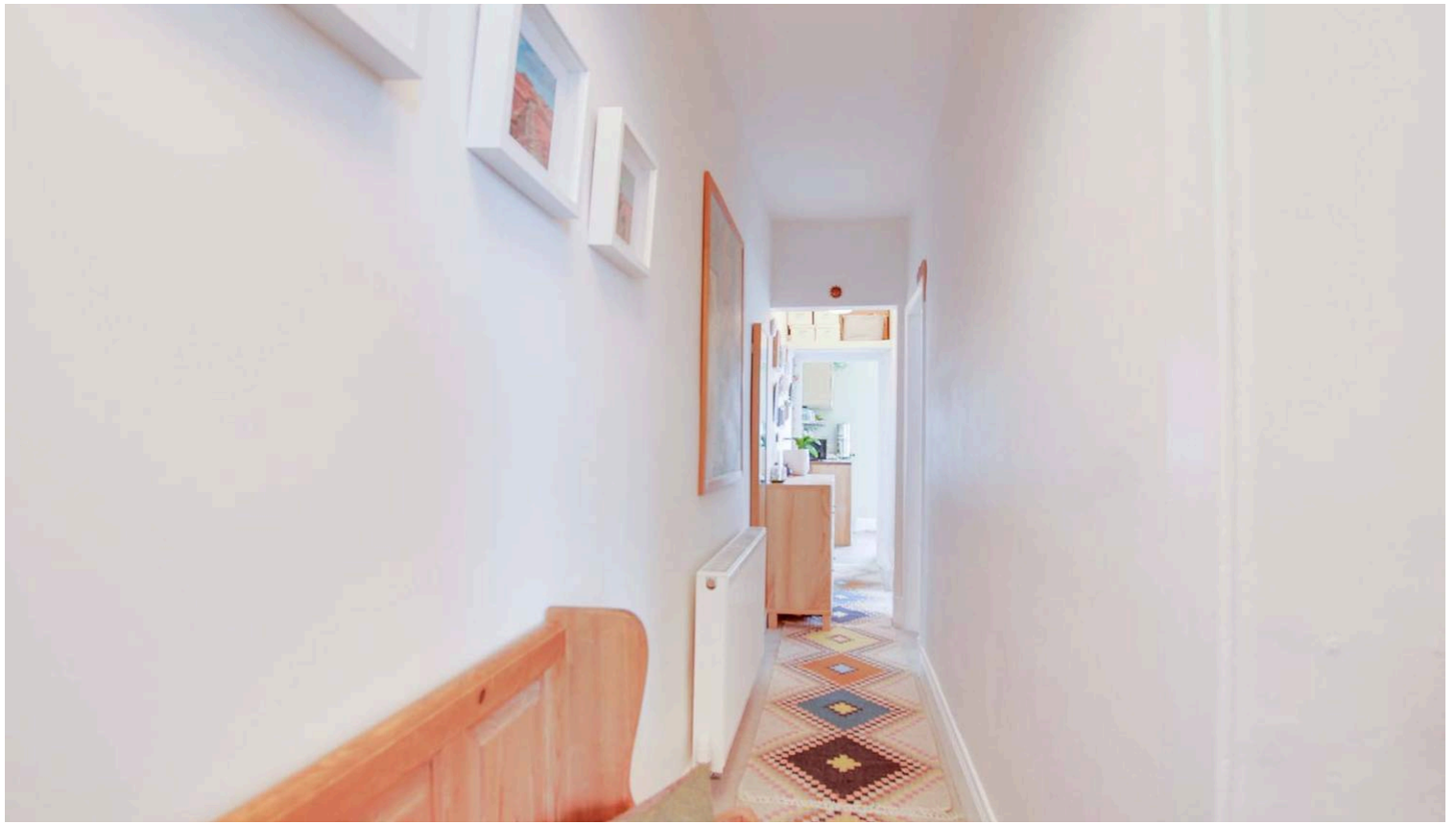
Lobby Area

With storage cupboard and access to:

Bathroom

6' 9" x 6' 5" (2.06m x 1.96m)

With a double-glazed window to the rear elevation, bath with shower over, wash hand basin, WC, tiled flooring and a radiator.



First Floor Apartment

Accessed via a rear door from the garden.

Landing

With a radiator.

Sitting Room

14' 2" x 11' 0" (4.32m x 3.35m)

With a window to the front elevation, a decorative fireplace and two radiators.

Bedroom

11' 0" x 10' 10" (3.35m x 3.30m)

With a double-glazed window to the rear elevation, a built-in cupboard and a radiator.

Bathroom

6' 5" x 5' 9" (1.96m x 1.75m)

With a double-glazed window to the side elevation, bath with a shower over, wash hand basin, WC, tiled flooring and a radiator.

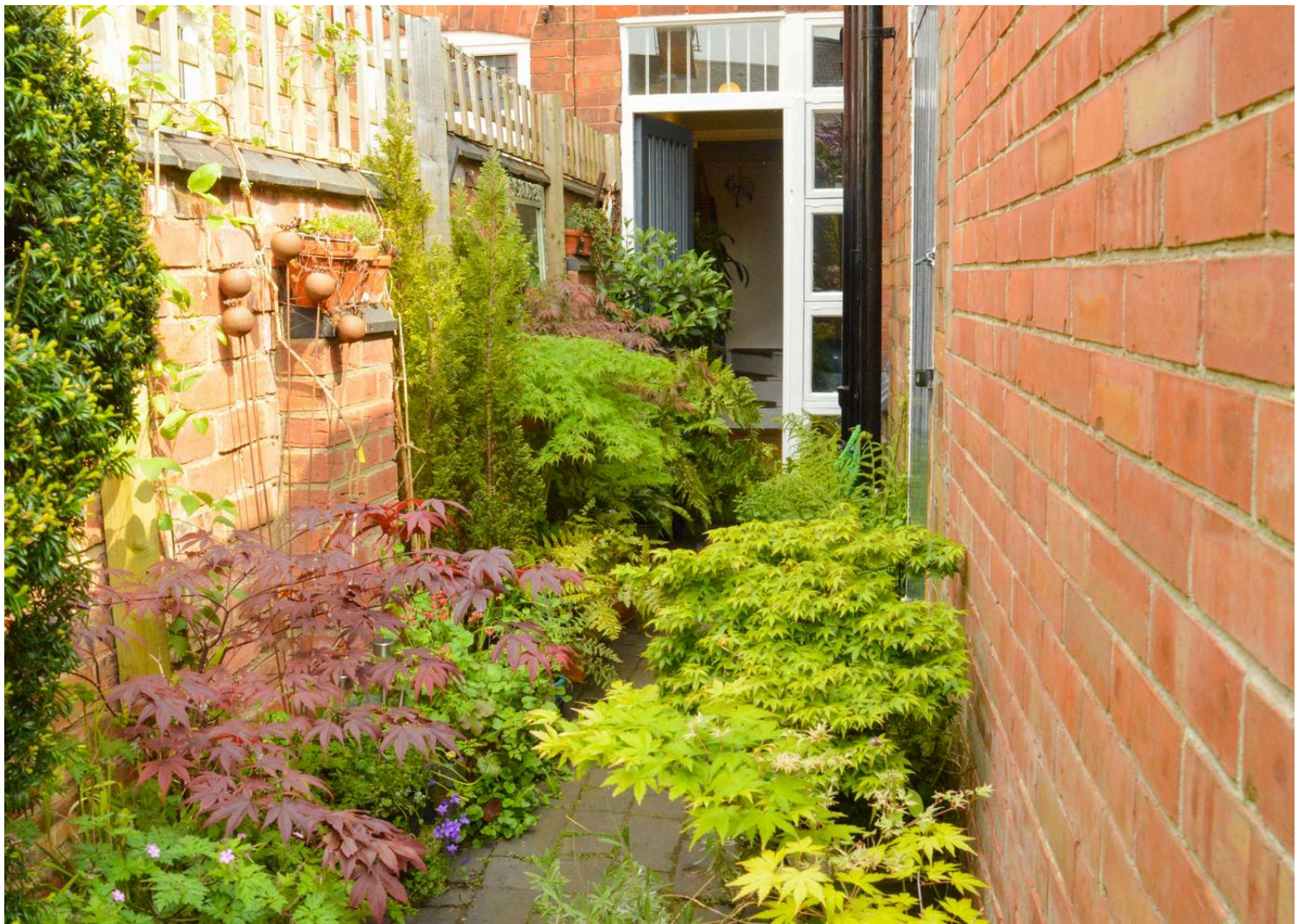
Kitchen

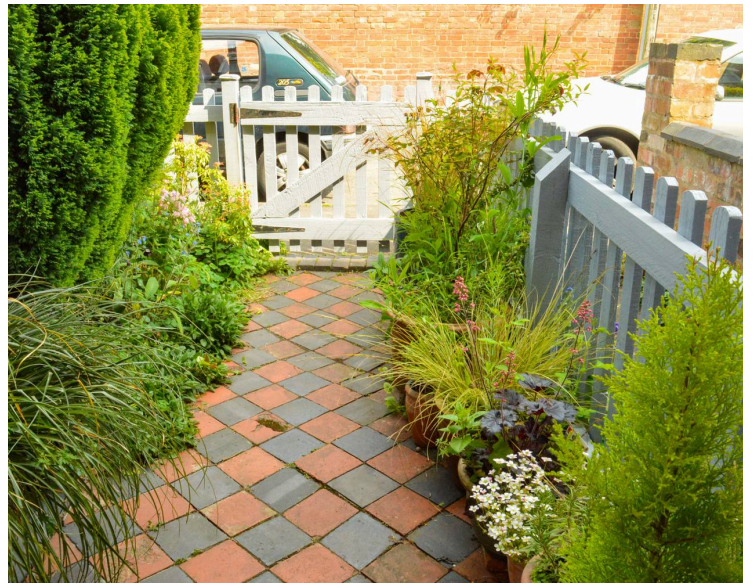
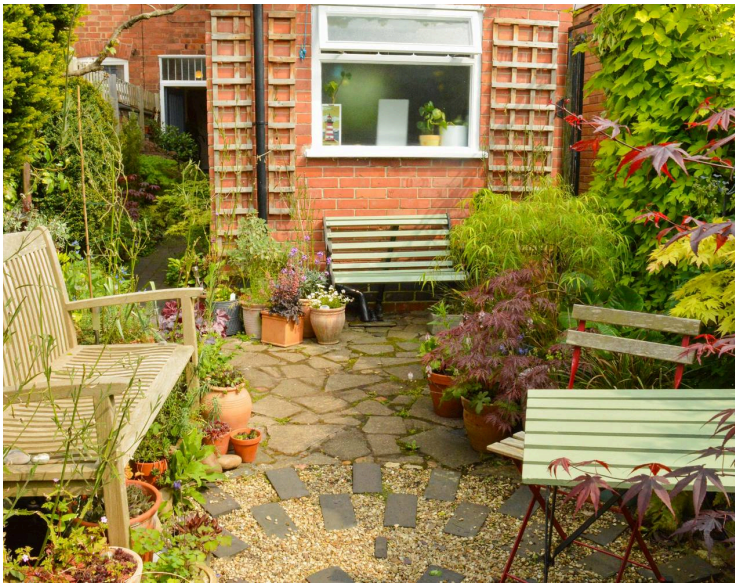
9' 1" x 7' 5" (2.77m x 2.26m)

With a double-glazed window to the rear elevation, a sink and drainer unit with a range of wall and base units with work surfaces over, gas cooker point, wall mounted boiler, space for a washing machine, tiled flooring and a radiator.









REAR GARDEN

An attractive, established, and mature garden with well-stocked flower beds, shed, greenhouse, fencing and walled perimeter, outside tap and gate to side access.

FRONT GARDEN

A gated front garden with plant and shrub borders and further gated access to the upstairs flats.



FLOOR 1

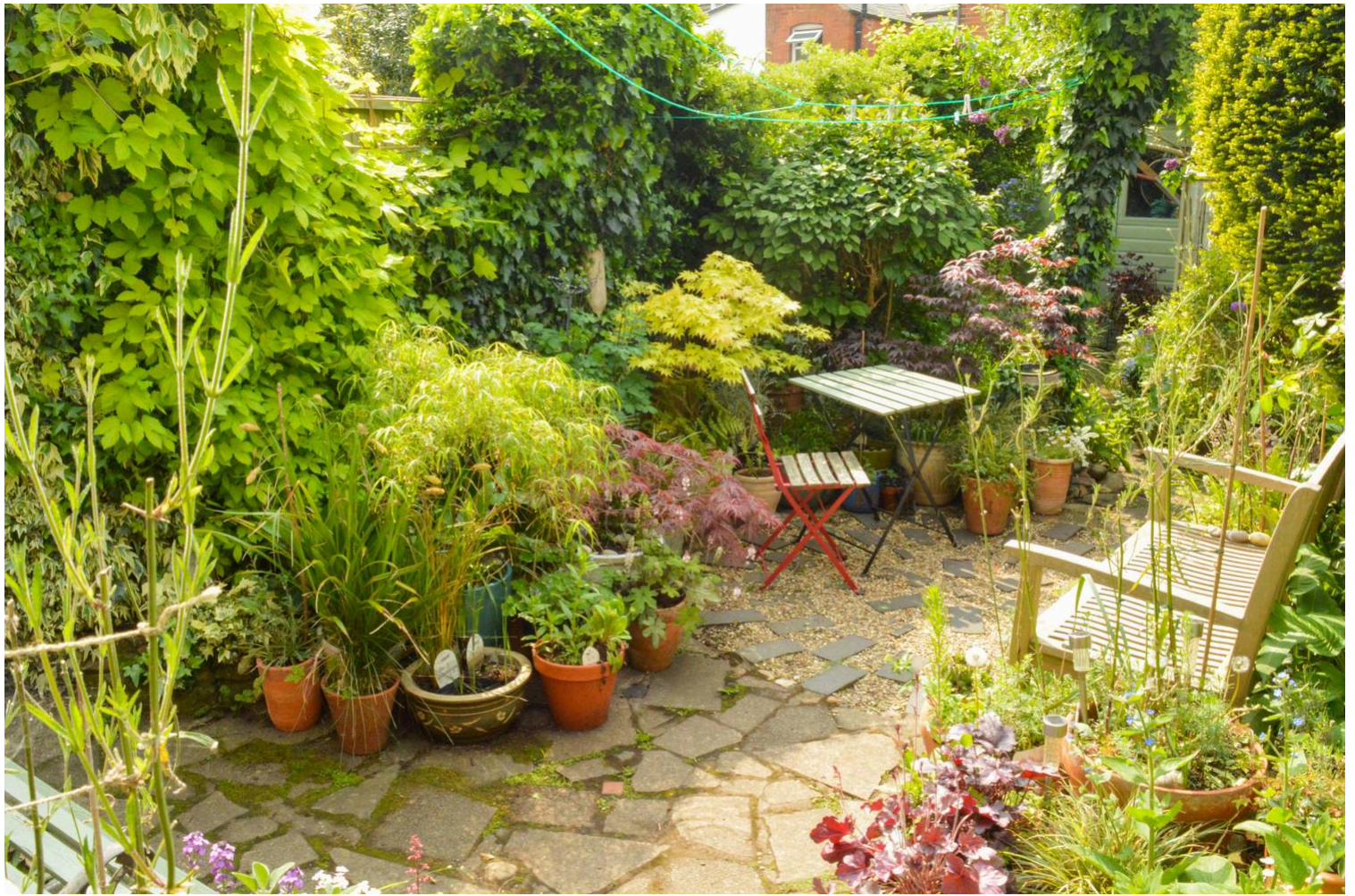
SIZES AND DIMENSIONS ARE APPROXIMATE, ACTUAL MAY VARY.



FLOOR 2

SIZES AND DIMENSIONS ARE APPROXIMATE, ACTUAL MAY VARY.





The property is well located for everyday amenities and services, including local public and private schooling together with nursery day-care, Leicester City Centre and the University of Leicester, Leicester Royal Infirmary and Leicester General Hospital. Victoria Park and Queens Road shopping parade with its specialist shops, bars, boutiques and restaurants are also within close proximity.

Council Tax band: A

Tenure: Freehold

EPC Energy Efficiency Rating: D

EPC Environmental Impact Rating: D

We'll keep you moving...



We must inform all prospective purchasers that the measurements are taken by an electronic take and are provided as a guide only and they should not be used as accurate measurements. We have not tested any mains services, gas or electric appliances, or fixtures and fittings mentioned in these details, therefore, prospective purchasers should satisfy themselves before committing to purchase. Intending purchasers must satisfy themselves by inspection or otherwise to the correctness of the statements contained in these particulars. Knightsbridge Estate Agents (nor any person in their employment) has any authority to make any representation or warranty in relation to the property. The floor plans are not to scale, and are intended for use as a guide to the layout of the property only. They should not be used for any other purpose. We are required by law to conduct anti-money laundering checks on all those selling or buying a property. Whilst we retain responsibility for ensuring checks and any ongoing monitoring are carried out correctly, the initial checks are carried out on our behalf by Lifetime Legal who will contact you once you have agreed to instruct us in your sale or had an offer accepted on a property you wish to buy. The cost of these checks is £60 (incl. VAT), which covers the cost of obtaining relevant data and any manual checks and monitoring which might be required. This fee will need to be paid by you in advance of us publishing your property (in the case of a vendor) or issuing a memorandum of sale (in the case of a buyer), directly to Lifetime Legal, and is non-refundable. We will receive some of the fee taken by Lifetime Legal to compensate for its role in the provision of these checks.