

Need a Mortgage in principle to make offers? Call us now for quick assistance!
0121 775 0101



Do you need to sell? Start your journey now! Call us we can help.
01564 777 314



155 Warwick Road

Knowle, B93 9LF

SCAN FOR MORE INFO
SIZE - 997 Sq Ft
TENURE - Freehold
COUNCIL TAX - Solihull Metropolitan Borough Council - D
BROADBAND - Upload Max 1000Mbps Download Max 1800Mbps
MOBILE - EE - 83%, Vodafone - 79%, 3 - 78%, O2 - 76%
EPC - D - 65
PARKING - Ample Driveway
FLOODRISK - Very Low
SERVICES - Mains
COVENANTS - N/A

Located within the Arden Academy catchment area and within walking distance of Knowle village and local amenities, this well-presented two bedroom traditional semi-detached home offers generous living space and an excellent rear garden. Set behind a driveway with ample parking, the property also benefits from a storage garage and a large private garden with a summer house.

FEATURES

- Beautifully Presented Semi-Detached Property
- Walking Distance to Knowle Village Centre
- Lounge with Log Burner
- Stunning Open Plan Kitchen/Breakfast/Family Room with Log Burner
- Two Good Sized Bedrooms Both with Fitted Wardrobes
- Modern Shower Room
- Large Private Rear Garden
- Garden Room
- Driveway Parking
- Arden Academy Catchment

Are you an investor interested in expanding your portfolio?

Call 01564 777 314 to provide your investment criteria for alerts.



SCAN TO VIEW OUR WEEKLY FILMS & SUBSCRIBE

Sneak Peeks

Every week, we unveil "Sneak Peeks," a feature showcasing exclusive properties before they hit Rightmove and other platforms.

The Landlord Club

Join our Landlord Club for weekly updates on legislation, market trends, and our Letting Director's 'Investment Pick of the Week' for optimal ROI.

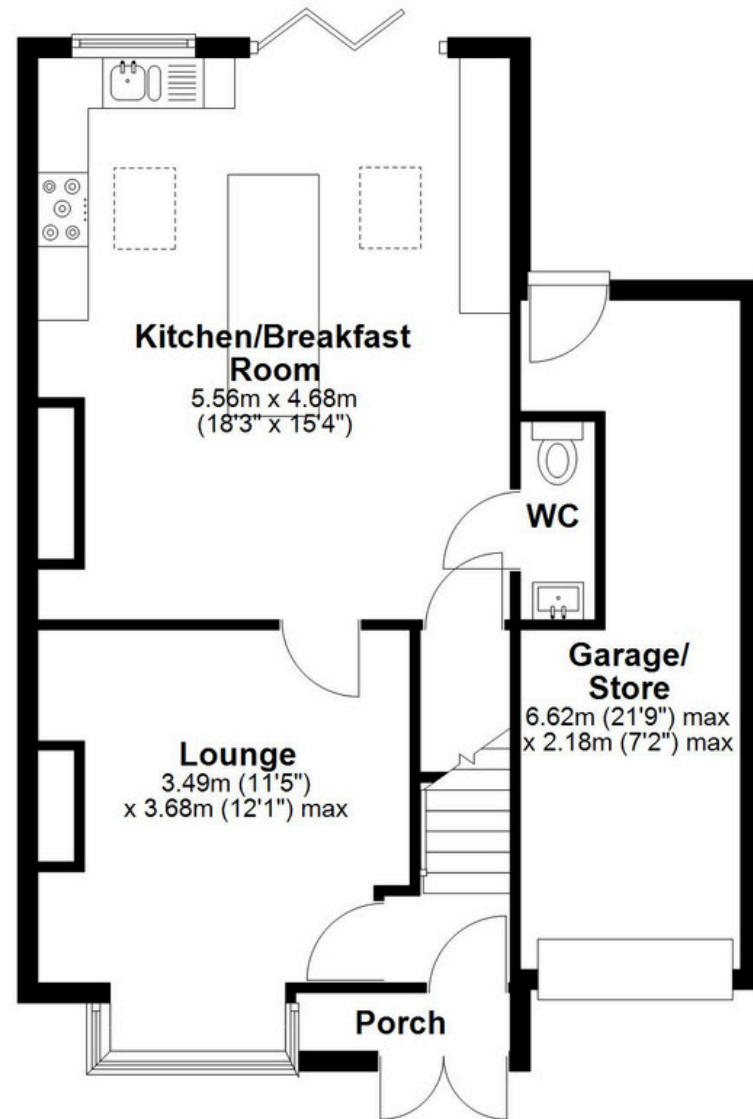
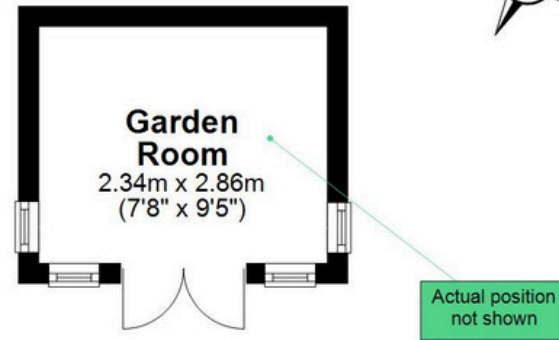
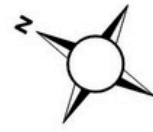
HTSPMD

Tune into 'How's The Solihull Property Market Dom' weekly for a quick, insightful snapshot of the market.

The Mortgage Update

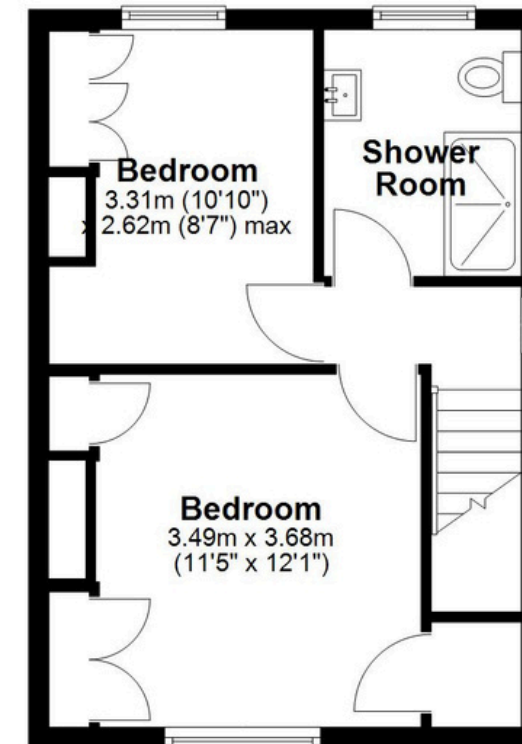
Get weekly insights and the best deals with our Mortgage Update, your shortcut to navigating the complex mortgage landscape confidently.

Ground Floor
 Main area: approx. 60.5 sq. metres (651.0 sq. feet)
 Plus garden room, approx. 6.7 sq. metres (72.1 sq. feet)



Main area: Approx. 92.6 sq. metres (997.2 sq. feet)
 Plus garden room, approx. 6.7 sq. metres (72.1 sq. feet)

First Floor
 Approx. 32.2 sq. metres (346.2 sq. feet)



This floor plan is for illustration purposes only, this is not intended to be a measured/scaled survey or comply with RICS guidelines. All measurements (including total floor area) openings, orientation and floor area are approximate. No details are guaranteed, they cannot be relied upon for any purpose and do not form part of any agreement. A party must rely upon its own inspection(s). No responsibility is taken for any error, omission, or mis-statement.
 Plan produced using PlanUp.