

GEORGE ROAD



GEORGE ROAD

GUILDFORD, SURREY, GU1 4NP

Central Guildford two bedroom, two bathroom,
unfurnished apartment available August

Available: 4th August 2026

£1,650 PCM (Per Calendar Month)

Not specified, 2 Bedroom, 2 Bathroom, 1 Reception,
Unfurnished

Key Features

- Central location
- Two bedrooms
- Two bathrooms
- Open plan living space
- Unfurnished
- Available August





THE PROPERTY

Description

The front door to the apartment is on the ground floor and opens into stairs leading up to the first floor, where you will find a storage cupboard and then a large open plan reception room and kitchen with appliances.

The main bedroom includes an ensuite shower room and there is a second bedroom as well as a family bathroom with a shower over the bath



Location

George Road is located in a very central location within walking distance of most of Guildford's amenities, including the main line station, restaurants, shops and leisure facilities.

The property is available in August
Guildford Borough Council tax band C
EPC D

Holding deposit £380

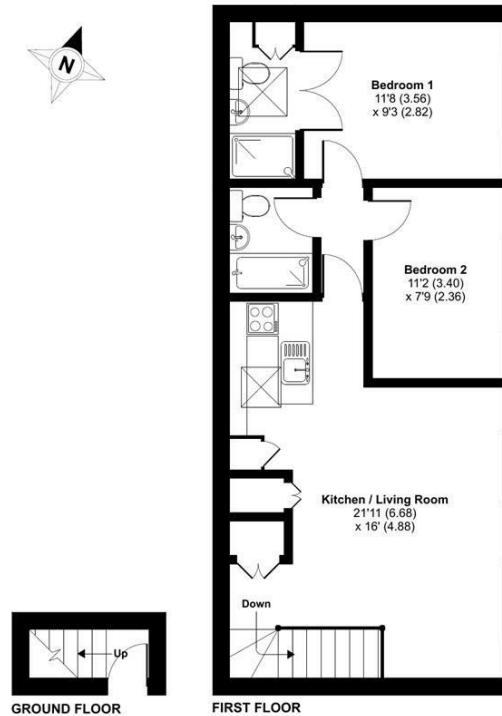
To check broadband and mobile phone coverage please visit Ofcom here: ofcom.org.uk/phones-telecoms-and-internet/advice-for-consumers/advice/ofcom-checker


Permit parking only (all enquiries to Surrey County Council)



George Road, Guildford, GU1

Approximate Area = 632 sq ft / 58.7 sq m
For identification only - Not to scale



 Certified Property Measurer
Floor plan produced in accordance with RICS Property Measurement Standards incorporating International Property Measurement Standards (IPMS2 Residential). © nichecom 2024.
Produced for Grantleys. REF: 1191996.

Guildford

Poyle House 24 Epsom Road
Guildford
Surrey
GU1 3LE

Tel: 01483 407600

