



Price
£270,000

Freehold

3x  1x  1x 

**Park View Close,
Goodnestone,
Canterbury, Kent, CT3**

Wards
Helping you move forwards



Main features

- Charming village of Goodnestone
- Beautiful rear views across the grounds of Goodnestone Park
- Peaceful English countryside setting with walks close by
- Close to village cafe and friendly local pub
- Ideal for first time buyers or growing families

Accommodation

GROUND FLOOR

Entrance Hallway

Lounge: 13'1 x 11'5 (3.99m x 3.48m)

Kitchen/Diner: 15'1 x 9'2 (4.60m x 2.80m)

Separate Toilet

FIRST FLOOR

Landing

Bedroom 1: 11'7 x 9'8 (3.53m x 2.95m)

Bedroom 2: 9'8 x 8'9 (2.95m x 2.67m)

Bedroom 3: 8'4 x 7'7 (2.54m x 2.31m)

Bathroom: 7'6 x 6'1 (2.29m x 1.86m)

OUTBUILDING

Shed

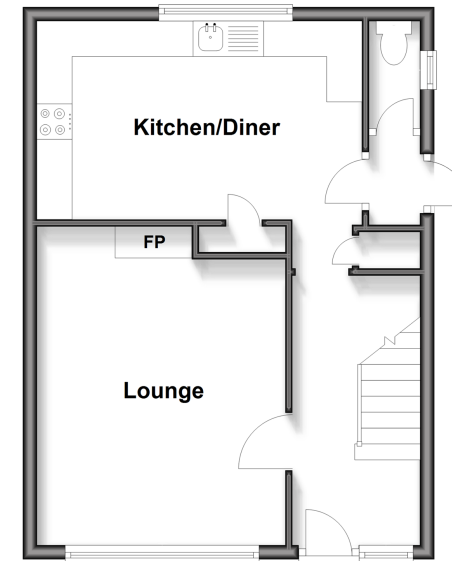
OUTSIDE

Front Garden

Rear Garden

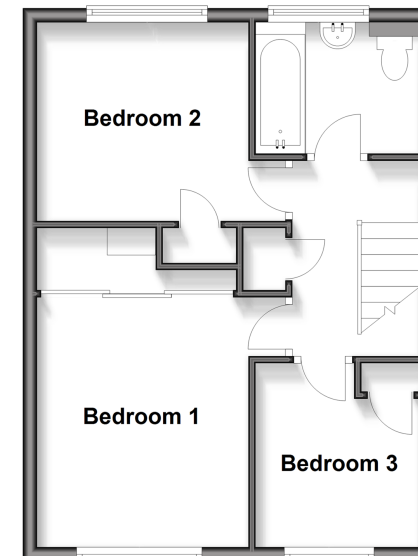
Ground Floor

Approx. 40.2 sq. metres (432.4 sq. feet)



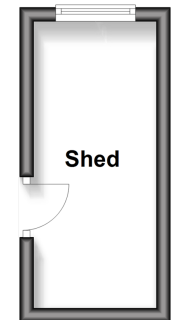
First Floor

Approx. 40.2 sq. metres (432.6 sq. feet)



Outbuilding

Approx. 7.5 sq. metres (81.1 sq. feet)



Call Canterbury - 01227 766669 ■ wardsof Kent.co.uk

- Legal advice should be taken to verify fixtures/fittings, planning, alterations and/or lease details
- Appliances & services are untested, dimensions are approximate and floor plans are not to scale



10349500/20251126/TG/CB