

**14 CHESHIRE GARDENS
CHESSINGTON
KT9 2PR
£365,000**

GROUND FLOOR MAISONETTE

TWO BEDROOMS

14'4 X 9'9 LIVING ROOM

11'10 X 9' MODERN KITCHEN

MODERN SHOWER ROOM

DOUBLE GLAZED WINDOWS

GAS CENTRAL HEATING

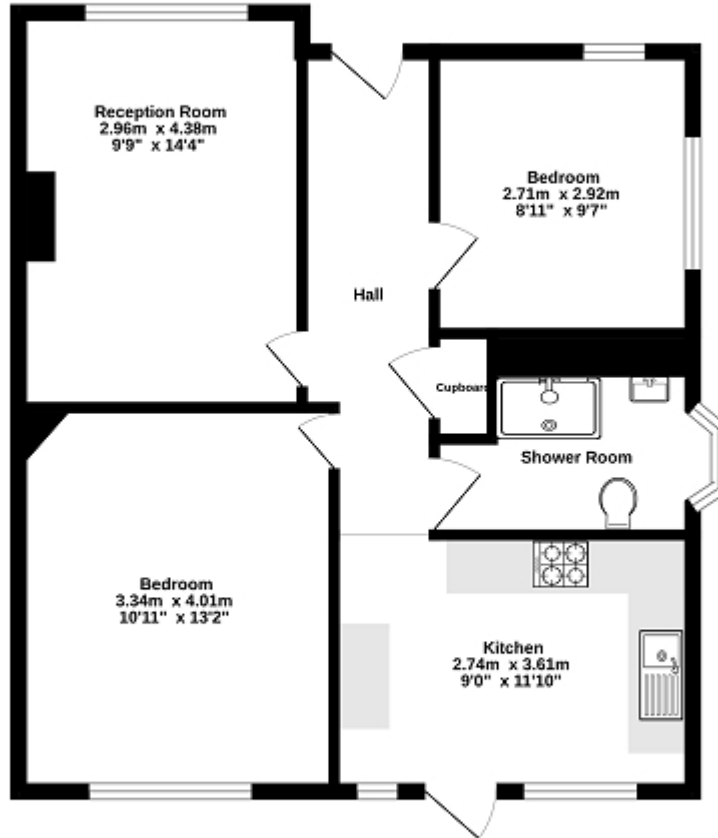
30' X 28' REAR GARDEN

OFF STREET PARKING

WELL PRESENTED

CUL DE SAC LOCATION

Ground Floor



TOTAL FLOOR AREA: 59.9 sq.m. (645 sq ft.) approx.

Whilst every effort has been made to ensure the accuracy of the floorplan contained herein, measurements of doors, windows, rooms and any other items are approximate and no responsibility is taken for any error, omission or mis-statement. This plan is for illustrative purposes only and should be used as such by any prospective purchaser. The services, options and appliances shown have not been tested and no guarantee as to their operability or efficiency can be given.
Made with Metrigis 11/20