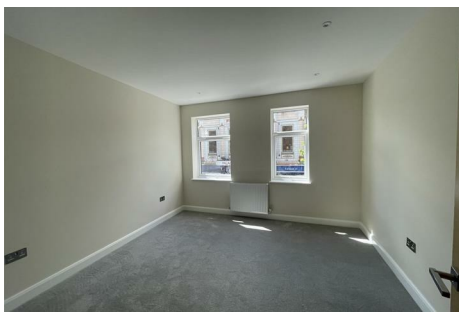




Parkfields

Estates



South Road , Southall, UB1 1SU

PARKFIELDS ESTATES are pleased to offer for RENT this Recently NEWLY CONVERTED 2 Bedroom First Floor Flat. Offering Open Plan Fitted Kitchen/Lounge, Shower Room.

Located on the main Uxbridge Road close to Iron Bridge walking distance to local Schools, Shops and Public Transport.

AVAILABLE NOW

Local Authority: London Borough of Ealing
Council Tax Band:

£2,000

First Floor 11 South Road , Southall, UB1 1SU



[Directions](#)



Floor Plan

These particulars, whilst believed to be accurate are set out as a general outline only for guidance and do not constitute any part of an offer or contract. Intending purchasers should not rely on them as statements of representation of fact, but must satisfy themselves by inspection or otherwise as to their accuracy. No person in this firm's employment has the authority to make or give any representation or warranty in respect of the property.

1 The Crescent, Southall, Middlesex, UB1 1RE
Tel: 0208 571 0253 Email: info@parkfields-estates.com <https://www.parkfields-estates.com>

Energy Efficiency Rating		
	Current	Potential
Very energy efficient - lower running costs		
(92 plus) A		
(81-91) B		
(69-80) C		
(55-68) D		
(39-54) E		
(21-38) F		
(1-20) G		
Not energy efficient - higher running costs		
England & Wales	EU Directive 2002/91/EC	