



# Maine Tower

9 Harbour Way, E14

Asking Price £600,000

Experience contemporary urban living at Docklands in this beautiful 1-bedroom apartment in Maine Tower. Situated on the 21st floor, the development is superbly in the heart of South Quay 0.2 miles from South Quay DLR.

**CHESTERTONS**



# Maine Tower

## 9 Harbour Way, E14

- One Bedroom | One Bathroom
- Integrated Kitchen Appliances
- 635sq ft of Internal Living Space
- Private Balcony
- East-facing Views
- South Quay DLR Station 260m



A luxurious one bedroom apartment, spanning 635 sq. ft with a private balcony, situated on the 21st floor in the highly desired Maine Tower, superbly located in the heart of South Quay. The bright open-plan living room has ceiling to floor windows letting in plenty of light. The kitchen is fitted with sleek grey worktops and SMEG built-in appliances including microwave and dishwasher and a cooker tap.

The master bedroom offers plenty of natural light and is carpeted throughout and has plenty of built-in wardrobe space. Features include comfort cooling, USB sockets and light dimmer switches are present throughout the property.

The development is superbly located in the heart of South Quay 0.2 miles from South Quay DLR and 0.5 miles from Canary Wharf Jubilee Line and Crossrail. Onsite amenities include 24 hour concierge, a residents lounge, Cinema, games room and business centre.

**Tenure:** Leasehold 988 years approx. remaining

**Service Charge:** £4,459 pa 21st, 42nd, 63rd & 105th anniversaries of 1 January 2016.

**Ground Rent:** £350 pa

**Local Authority:** Tower Hamlets

**Council Tax Band:** E

Score	Energy rating	Current	Potential
92+	A		
81-91	B	86 B	86 B
69-80	C		
55-68	D		
39-54	E		
21-38	F		
1-20	G		

### *Chestertons Canary Wharf & Greenwich Sales*

Harbour Island

28 Harbour Exchange Square

London

E14 9GE

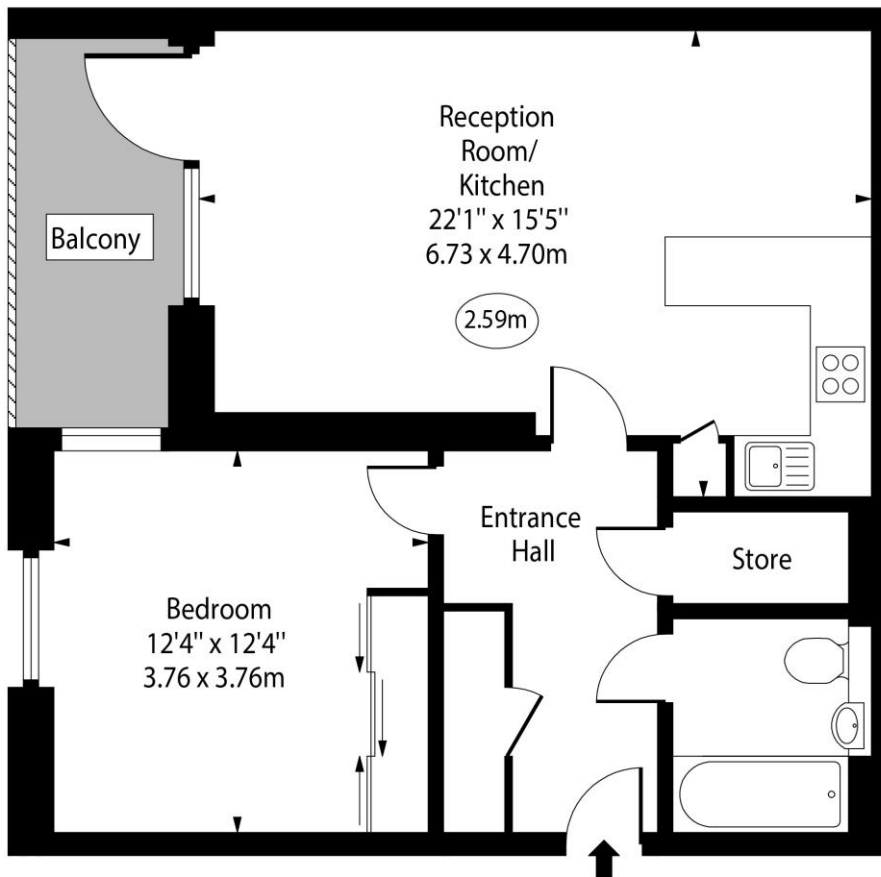
canarywharf@chestertons.co.uk

020 7510 8300

chestertons.co.uk

# Maine Tower, Harbour Way, E14

○ - Ceiling Height



Twenty First Floor

Approx Gross Internal Area      635 Sq Ft - 58.99 Sq M

Every attempt has been made to ensure the accuracy of the floor plan shown. However, all measurements, fixtures, fittings, and data shown are approximate interpretations and for illustrative purposes only. Measured according to the RICS. Not To Scale.

[www.goldlens.co.uk](http://www.goldlens.co.uk)

Ref. No. 030132K

